

Data Specifics and Limitations

Data source

January 1 – April 12, 2020, data gathered from faxed bed sheets sent to the MBH Authorizations Department for manual data entry. Several dates each month data was not submitted. Dates after April 13, 2020, MBH crisis supervisors and MMC ED social work complete an daily online Smartsheet form for all sites, except for MMC. Accuracy increased over April and becomes more reliable after May 1, 2020. This is a manual process and thus the data may include entry errors. Data fields included the form are: Behavioral health census (see definition of behavioral health patients below), length of stay less than 24 hours, length of stay between 25-72 hours, length of stay between 73-168 hours and length of stay greater than 168 hours. The form data is archived and exported for manipulation.

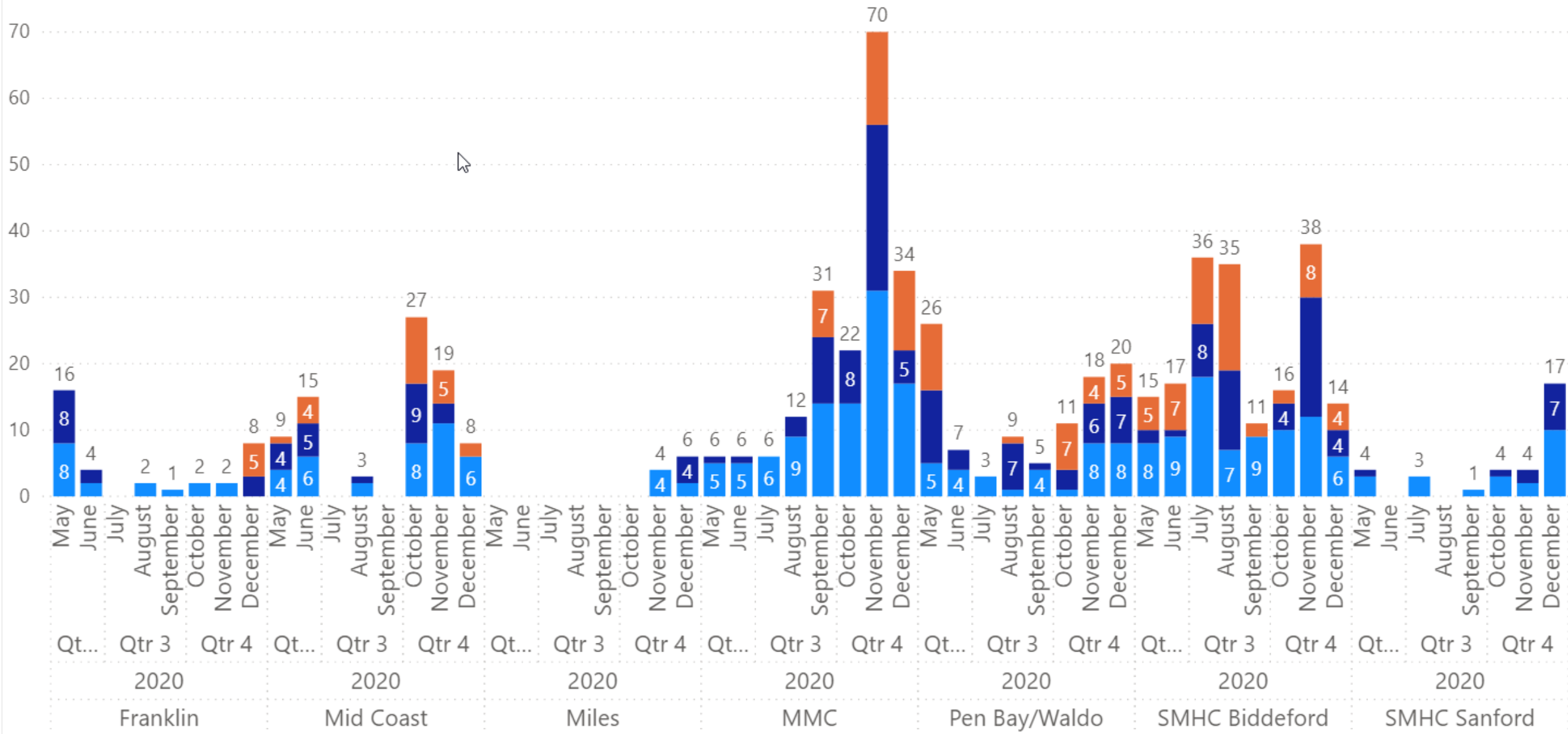
Definition of behavioral health patients in emergency department

Are admitted to the ED with a behavioral health Dx, OR have a psych order or crisis assessment request, OR have a psychiatrist or therapist on the treatment team, OR are awaiting an inpatient behavioral health bed, OR awaiting transfer to an inpatient behavioral health bed.

Note regarding MMC: Maine Medical Center selected to initially enter only bed searches (patients awaiting an inpatient behavioral health bed) rather than the aforementioned definition. Beginning 09/01/2020 MMC expanded to the shared definition with the other emergency departments. May through August data from MMC should not be compared with other emergency departments.

Cumulative Children Waiting

● Children Waiting >24hrs
 ● Children Waiting >72hours
 ● Children Waiting >168hrs (7days)



Percent of
total ED
behavioral
health
census
waiting
“NN” hours

Hospital	Average of % children waiting >24hrs	Average of % children waiting >72hours	Average of % children waiting >168hours
Franklin	32%	23%	0%
Qtr1	60%	50%	0%
Qtr2	36%	33%	0%
Qtr3	25%	0%	0%
Qtr4	25%	19%	0%
Mid Coast	26%	14%	10%
Qtr1	15%	0%	6%
Qtr2	30%	32%	14%
Qtr3	4%	6%	0%
Qtr4	34%	13%	14%
Miles	35%	15%	0%
Qtr1	60%	0%	0%
Qtr2	0%	0%	0%
Qtr3			
Qtr4	32%	21%	0%
MMC	28%	15%	6%
Qtr1	18%	13%	0%
Qtr2	31%	6%	0%
Qtr3	31%	11%	7%
Qtr4	29%	23%	11%
Pen Bay/Waldo	28%	23%	13%
Qtr1	26%	0%	33%
Qtr2	24%	27%	19%
Qtr3	21%	20%	3%
Qtr4	37%	28%	10%
SMHC Biddeford	25%	17%	17%
Qtr1	19%	26%	7%
Qtr2	32%	7%	19%
Qtr3	24%	13%	26%
Qtr4	24%	23%	14%
SMHC Sanford	32%	15%	0%
Qtr1	40%	13%	0%
Qtr2	27%	7%	0%
Qtr3	27%	0%	0%
Qtr4	33%	26%	0%
Grand Total	28%	17%	9%