

January 7, 2026

Committee on Health Coverage, Insurance and Financial Services

Public Hearing

**LD 1890 An Act to Facilitate the Development of Ambulatory Surgical  
Facilities by Exempting Certain Facilities from the Requirement to  
Obtain a Certificate of Need**

Good Afternoon, Senator D Bailey, Rep K Mathieson and distinguished members of the Committee on Health Coverage, Insurance and Financial Services. My name is Bonnie Vaughan RDH, IPDH, MEd, MBA. I reside in Cumberland and I'm Executive Director of Kennebec Valley Family Dentistry Center, a nonprofit dental center serving all ages, including more than 80% MC. Our services include diagnostic, preventive, restorative, and extractions services. Our Center KVFD is located in the Ballard Center, the Old Maine General Hospital on 6 E Chestnut St In Augusta. One of the major needs we saw was sedation services for our patients.

We are speaking in support of LD 1890. Since 2021 KVFD has been planning, and developing an expansion to our current location by adding 5 dental operatories including 2 sedation rooms/ ASC, to our current 8 chair center. We did go thru the process of submitting the Letter of Intent in 2024 to the Dept of HHS. We were very lucky to receive a letter from the Department in Oct 2024. Based on the dental needs and ASC plan we were not subject to a review.

I have attached our initial letter of intent and the Dept HHS response. I have also attached floor plan for the expansion which we hope to complete by March 2026. It has taken more than 5 years for the planning, fund raising and construction.

Maine has very few ASC-especially for dental care. Removing the letter of intent is just one step in a very long detailed process in creating ASC.

We appreciate the Committee's time to review this health care issue and I would be available for additional support at the committee's work session.

Bonnie Vaughan IPDH, MEd, MBA Ex Dir Kennebec Valley Family Dentistry Ballard Center 420, 6 E Chestnut St  
Augusta, ME 04330 [bssvaughan@msn.com](mailto:bssvaughan@msn.com) 207-623-3400

Janet T. Mills  
Governor

Sara Gagné-Holmes  
Commissioner



Maine Department of Health and Human Services  
11 State House Station  
Augusta, Maine 04333-0011  
Tel.: (207) 287-3707; Fax: (207) 287-3005  
TTY: Dial 711 (Maine Relay)

October 21, 2024

Ms. Bonnie Vaughan, Executive Director  
Kennebec Valley Family Dentistry  
Ballard Center Suite 420  
6 E Chestnut Street  
Augusta, ME 04330

Dear Ms. Vaughan,

This correspondence responds to your emails dated October 10, 2024, and letter of intent dated October 13, 2024, stating that Kennebec Valley Family Dentistry intends to expand its dental services to include an Ambulatory Dental Surgical Center ("ASC") in Augusta, ME. The ASC will allow the use of a higher level of sedation for many patients and will alleviate the long waiting list for dental services, particularly among MaineCare patients. Capital costs are estimated at \$1,651,000 and additional operating costs are estimated to be below the \$1,379,394 CON threshold.

Based solely on the information you provided, the Department of Health and Human Services has determined that the proposal as described is not subject to review. The applicable reason(s) this is not a covered project are indicated below:

- ☐ The project is not a transfer of ownership or acquisition of control of a health care facility that is under the control of the same parent corporation.
- ☐ This project is not an acquisition of major medical equipment where the expenditure exceeds \$4,414,059.
- ☒ This project is not a new health service where:
  - ☒ Capital expenditures exceed \$4,138,181 or
  - ☒ Third year annual operating costs exceed \$1,379,394.
- ☐ This project is not a new health care facility where:
  - ☐ Capital expenditures exceed \$5,000,000 for a nursing facility or
  - ☐ Capital expenditures exceed \$3,000,000 for other covered facilities.
- ☐ The total capital costs associated with the project does not exceed:
  - ☐ \$6,896,968 for nursing facilities.
  - ☐ \$13,793,936 for hospitals or other covered facilities.

The applicant is responsible for the accuracy of the information provided to the department. Please submit architectural plans to the State Fire Marshalls Office for approval and contact the Division of Licensing and Certification to obtain your initial ASC license.

Sincerely,

A handwritten signature in black ink, appearing to read "Richard S. Lawrence".

Richard S. Lawrence  
Senior Health Care Financial Analyst  
cc: File



6 E Chestnut St  
Ballard Center Suite 420  
Augusta, Maine 04330

October 13, 2024

William Montejo Director  
Maine Dept. of Health &  
Human Services  
Licensing and Certification  
11 State House Station  
41 Anthony Avenue  
Augusta, ME 04333-0011

Richard S. Lawrence  
Senior Health Care Financial Analyst  
Maine Dept. of Health & Human Services  
Licensing and Certification  
11 State House Station  
41 Anthony Avenue  
Augusta, ME 04333-0011

**RE: Letter of Intent to expand the KVFD Dental Center to include an Ambulatory Surgical Center in Augusta Maine**

Dear Bill & Rich,

On behalf of the Kennebec Valley Family Dentistry, a nonprofit 501 C 3 organization, we are filing this Letter of Intent to expand our dental services to include an Ambulatory Dental Surgical Center in Augusta Maine. We are currently located at the Ballard Center on 6 East Chestnut St. and the expansion will include five more dental operators and the Surgical Center. We are requesting a ruling from The Department to approve the KVFD Expansion to build and operate a dental surgical center.

KVFD has been providing dental restorative, preventive, extraction and emergency services in the Augusta area since 2009. The current space includes 8 dental operatories. In 2021, because of the continued demands for dental care from our Maine Care patients we started to plan an expansion. Our population includes all ages and serves uninsured, underinsured, Medicaid and Medicare populations. We are open Monday – Friday. Our dental hygiene appointments are booked 12 months and our dental appointments are booked out more than 5 months.

The expansion of 3,000 sq ft will be adjacent to the current location on the 4<sup>th</sup> floor of the Ballard Center. We currently have 2 N2O carts which are used by 3 of our dental providers, but, we have many patients that need a higher level of sedation and we have very few referral offices that will take our MC patients.

Kennebec Valley Family Dentistry believes our Letter of Intent and request for approval may fall under DHHS, Division of Licensing and Certification and Healthcare Oversight. This might include M.R.S. Title 22 and Chapter 103 A. The current budget estimate is \$1,651,000. which falls below the Threshold amounts for CON projects.

KVFD respectfully requests the Department issue a response letter confirming that the proposed expansion project is subject to review and advising regarding the next steps. We request that you work with us to schedule a Technical Assistance Meeting to discuss the next steps.

We look forward to your response and assistance in moving this project forward.

Sincerely,

Bonnie

Bonnie Vaughan IPDH, MEd, MBA  
Executive Director  
Kennebec Valley Family Dentistry  
Ballard Center Suite 420  
6 E Chestnut St  
Augusta, ME 04330  
[bssvaughan@msn.com](mailto:bssvaughan@msn.com)  
207-623-3400 office  
207-232-4836 cell

- Favorites
  - Sent Items 3
  - Inbox 534
  - Junk Email 1575
  - Jean Grigdy
  - Deleted Items 140
- BSSvaughan@msn.com
  - Inbox 534
  - Junk Email 1575
  - Sent Items 3
  - Drafts 785
  - Deleted Items 140
  - 403b KVFD
  - American Funds 417
  - Archive
  - Ballard Center
  - CDHP decay kids
  - Conversation History
  - dental replacements
  - DHI
  - DHT
    - FAFSA
    - DianeD
    - EvalMOHS
    - Hebron
    - Ins c e
    - IPDH
    - IRS
    - JTGormanAppl
    - Kennebec cty ARPA
    - Kneka
    - legislative
    - legislature08-09
    - Lindsay trust 2016
    - Mary B
    - MCD 2014DentaQuestgrant
    - MDHA
    - MDHygienists
    - mhaf
    - MPCA
    - MPH
    - nasahpdentalben
    - New folder...
    - Notes
    - Old 1970 pictures
    - Owen...
    - pfs compliance
    - PH Hygienists
    - pictures Bday
    - Preg Gingivitis
    - Primerica.
    - Raging Bulls o8
    - RSS Feeds
    - Snoozed

Results Has attachments Unread To me Mentions me Flagged

RE: Letter of Intent, for a Dental Ambulatory Surgical Center, in Augusta Maine

From: Bonnie Vaughan <BSSvaughan@msn.com>  
Sent: Thursday, October 10, 2024 8:41 AM  
To: Lawrence, Rich S. <Rich.S.Lawrence@maine.gov>  
Subject: Re: Letter of Intent, for a Dental Ambulatory Surgical Center, in Augusta Maine

EXTERNAL: This email originated from outside of the State of Maine Mail System. Do not click links or open attachments unless you recognize the sender and know the content is safe.

Good Morning,

Yes we have a budget and funding from the Kennebec County ARPA Grant, Congressional District Spending Grant and some private grants.

Kennebec County ARPA	\$603,000.
Congressional District Spending Grant	\$623,000.
Private Grants	\$425,000
Total	\$1,651,000.

Let me know if you need additional information.

Thank you for your quick response.

Bonnie

Bonnie Vaughan IPDH, MEd, MBA  
Executive Director  
Kennebec Valley Family Dentistry  
Ballard Center 420  
6 E Chestnut St  
Augusta, ME 04330  
[bssvaughan@msn.com](mailto:bssvaughan@msn.com)  
207-623-3400 office  
207-232-4836 cell

From: Lawrence, Rich S. <Rich.S.Lawrence@maine.gov>  
Sent: Thursday, October 10, 2024 7:49 AM  
To: Bonnie Vaughan <bssvaughan@msn.com>; Montejo, William <William.Montejo@maine.gov>  
Subject: RE: Letter of Intent, for a Dental Ambulatory Surgical Center, in Augusta Maine

January

S	M	T	W	T	F	S
28	29	30	31	1	2	3
4	5	6	7	8	9	10
11	12	13	14	15	16	17
18	19	20	21	22	23	24
25	26	27	28	29	30	31

Today • Wed, Jan 7

No more events scheduled today  
Create new event

+ Add a task due today

Tomorrow • Thu, Jan 8

Up next

12:00 PM Maine Oral Health Cen...  
1 hour admin@newenglandrha...

12:00 PM MOHCA Meeting  
1 hour <https://us02web.zoom.us/j/...>

1:00 PM Canceled: Dental Therapy I...  
1 hour <https://us06web.zoom.u...>

Sat, Jan 10

Saturday Team Meeting  
+ New event

# NEW AMBULATORY HEALTHCARE OCCUPANCY FOR KENNEBEC VALLEY FAMILY DENTISTRY AUGUSTA, MAINE

## DRAWING INDEX

- TL1 TITLE SHEET  
A1 HCO UNIT PLANS  
A2 PLANS & MEDICAL GAS  
A2A MEDICAL GAS EQUIPMENT PLANS AND DETAILS  
A2B PLANS AND DETAILS  
A3 GENERAL NOTES  
A4 REFLECTED CEILING PLAN AND DETAILS  
A5 SCHEDULES AND DETAILS

MECHANICAL DRAWINGS  
M-1 DUCTWORK FLOOR PLAN  
M-2 PIPING-5TH FLOOR PLAN

ELECTRICAL DRAWINGS  
E-01 LIGHTING PLAN  
E-02 POWER PLAN  
E-03 LIFE SAFETY PLAN  
E-04 FIRE ALARM  
E-05 PANEL SCHEDULES

## CODE INFORMATION

- PROJECT: NEW AMBULATORY HEALTHCARE OCCUPANCY  
FOR KENNEBEC VALLEY FAMILY DENTISTRY  
AUGUSTA, MAINE
- CURRENT APPLICABLE CODES TO WHICH THIS PROJECT IS DESIGNED:
- 2022 FEDERAL GUIDELINES INSTITUTE (FGI)  
AMERICAN DISABILITIES ACT (ADA)  
NFPA 101-2018  
NFPA 99-2021  
IBC 2015 & MAINE UNIFORM BUILDING CODE
- BUILDING DESCRIPTION:  
FOURTH FLOOR OF A MULTISTORY BUILDING, TYPE II (2,2,2), PROTECTED (NFPA), TYPE 1B, (IBC.)
- NFPA 101-2018
1. USE GROUP CLASSIFICATION AND AREA:  
AMBULATORY HEALTHCARE OCCUPANCY (AHO) 2,172 SF  
TOTAL 2,172 SF
2. CONSTRUCTION TYPE  
TYPE PROVIDED: TYPE II (2,2,2), PROTECTED.
3. OCCUPANCY LOAD (NEW CONSTRUCTION AREA)  
AND 2,172 SF/150 SF/PERSON = 15 PEOPLE
4. NUMBER OF EXITS # REQUIRED # PROVIDED
- AHO: 2 2
5. CAPACITY OF EXITS REQUIRED PROVIDED
- AHO: 15 X 2"/PERSON = 3" = 36" MIN. 66"
6. EGRESS WIDTH PER OCCUPANCY (BASED ON 101 CODE - NO REDUCTION  
ALLOWED FOR SPRINKLING) DOORS, CORRIDORS, RAMPS 0.2"

## ADDITIONAL INFORMATION FOR IBC CODE

1. HEIGHT AND AREA LIMITATIONS PER TABLE 503  
A. USE: AMBULATORY CARE
2. THE WALLS ENCLOSING THE AHO, SEPARATING IT FROM EXIT ACCESS CORRIDORS  
CORRIDORS, AND OTHER TENANT SPACES, SHALL BE 1 HOUR FIRE-PROTECTED  
TO STRUCTURE ABOVE.
3. THIRD PARTY INSPECTIONS AND OTHER TESTS AND DOCUMENTATION FOR FIRE STOPPING  
AS REQUIRED BY THE FIRE MARSHAL APPLICATION, AND INCLUDED AS  
IN THE SCOPE OF WORK.

## ARCHITECTURAL ABBREVIATIONS

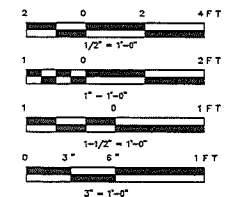
ABV.	ABOVE	HT.	HIGHT
AC.P.	ACUSTIC PANEL	H. & V.	HEATING AND VENTILATING
ACT.	ADJUSTABLE	INSUL.	INSULATION
ADJ.	ADJUSTABLE	JOINT	JOINT
ALT.	ALTERNATE	LONG	LONG
ALUM.	ALUMINUM	M.T.	METAL THRESHOLD
AND	AND	MAG.	MAGNAN
APPROX.	APPROXIMATE	M.B.M.	METAL BUILDING MANUFACTURER
AT	AT	MCH.	MECHANICAL
BLDG.	BUILDING	M.D.	MASONRY OPENING
BLOC.	BLOCKING	MTG.	MOUNTING
BTM.	BOTTOM	MTL.	METAL
BUT.	BUT	N.I.C.	NOT IN CONTRACT
BTWN.	BETWEEN	NO.	NUMBER
C.	CAST IRON	O.C.	ON CENTER
C.I.	COATED INSULATION SYSTEM	OP.	OPENING
C.J.	CONTROL JOINT	OPPHD.	OPPOSITE HAND
CAB.	CABINET	PC	PIECE
C.L.	CENTER LINE	PL.	PLATE
C.L.	CEILING	PL.	PAIR
C.M.	CONCRETE MASONRY UNIT	PT.	PLANT
C.C.	CONCRETE	R.	ROUGH OPENING
CONT.	CONTINUOUS	REQD.	REQUIRED
CONC.	CONCRETE	RET.	RETURN
CONC.	CONCRETE	R.M.	ROOM
CONC.	CONCRETE	R.W.L.	RAIN WATER LEADER
CONC.	CONCRETE	S.	SEALANT
CONC.	CONCRETE	S.C.	SCHEDULE
CONC.	CONCRETE	SECT.	SECTION
CONC.	CONCRETE	S.F.O.	SAVE FOR OWNER
CONC.	CONCRETE	SMT.	SHEET
CONC.	CONCRETE	SM.	SIMILAR
CONC.	CONCRETE	S.S.	STAINLESS STEEL
CONC.	CONCRETE	STD.	STANDARD
CONC.	CONCRETE	STL.	STEEL
CONC.	CONCRETE	STD.	STORAGE
CONC.	CONCRETE	SUSP.	SUSPENDED
CONC.	CONCRETE	SYN.	SYNTHETIC
CONC.	CONCRETE	T.	T
CONC.	CONCRETE	T.B.R.	TO BE REMOVED
CONC.	CONCRETE	TEMP.	TEMPERED
CONC.	CONCRETE	THK.	THICKNESS
CONC.	CONCRETE	THRES.	THRESHOLD
CONC.	CONCRETE	TYP.	TYPICAL
CONC.	CONCRETE	V.C.T.	VINTS COMPOSITION TILE
CONC.	CONCRETE	V.I.F.	VERIFY IN FIELD
CONC.	CONCRETE	W/	WITH
CONC.	CONCRETE	W/O	WOOD
CONC.	CONCRETE	W/O	WINDOW OPENING
CONC.	CONCRETE	W/O	WITHOUT

## MATERIALS LEGEND

	CONCRETE MASONRY UNIT (CMU)
	BRICK
	CONCRETE
	EARTH
	GYPSUM WALLBOARD (GWB) GROUT AND SAND
	RIGID INSULATION
	ALUMINUM
	BATT INSULATION
	FLYWOOD
	DIMENSION LUMBER OR WOOD BLOCKING
	FINISH WOOD
	METAL (SMALL SCALE)

## SYMBOLS LEGEND

	SECTION NUMBER		DOOR HEADER
	ROOFING WALL OR PARTITION SECTION		ROOM HEADER
	DETAIL DESIGNATION		WINDOW TYPE
	SHOWER		PARTITION TYPE
	INTERIOR ELEVATION SYMBOL		CHAINING (FIRE RATED WHERE APPLICABLE)
			SEALANT



CHECK GRAPHIC SCALE BEFORE USING

DATE	REVISIONS	BY
1/1/2023	GSP	
2/1/2023	GSP	
3/30/2023	GSP	
3/1/2023	GSP	

GEORGE S. PARKER  
ARCHITECT  
P.O. BOX 1327 KIM STREET  
DAMARISCOTTA, MAINE  
207-683-9754

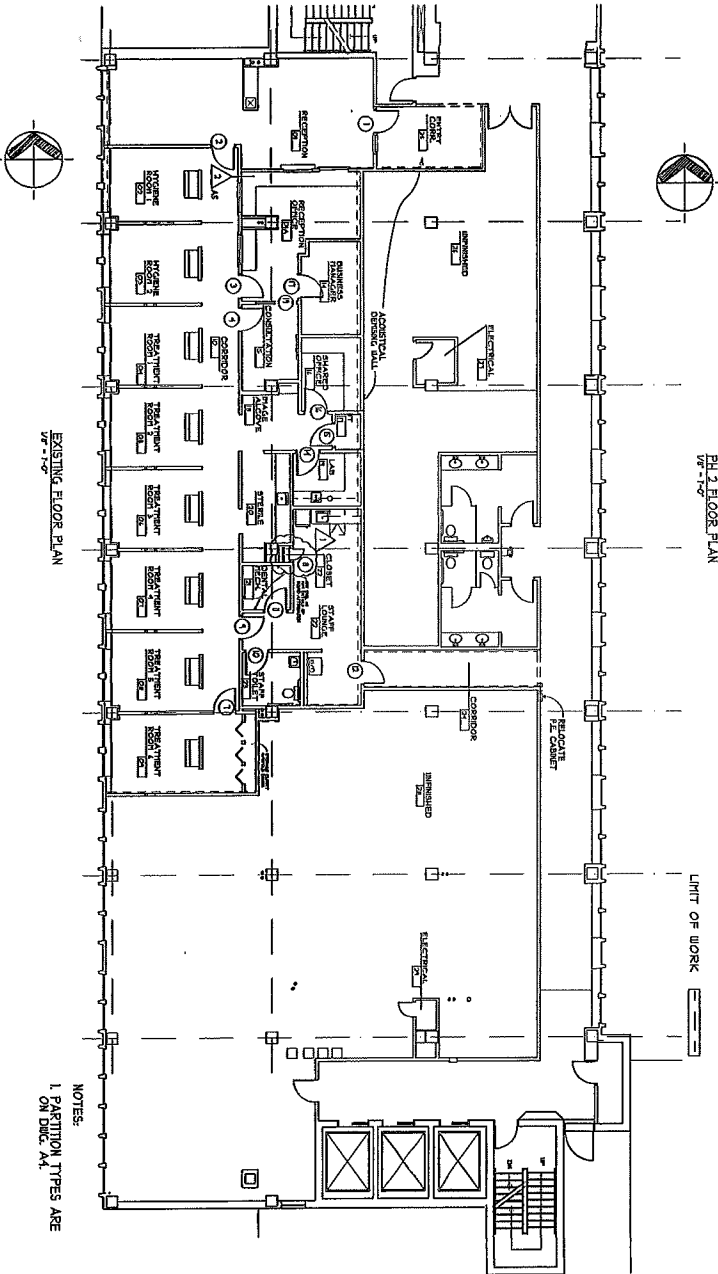
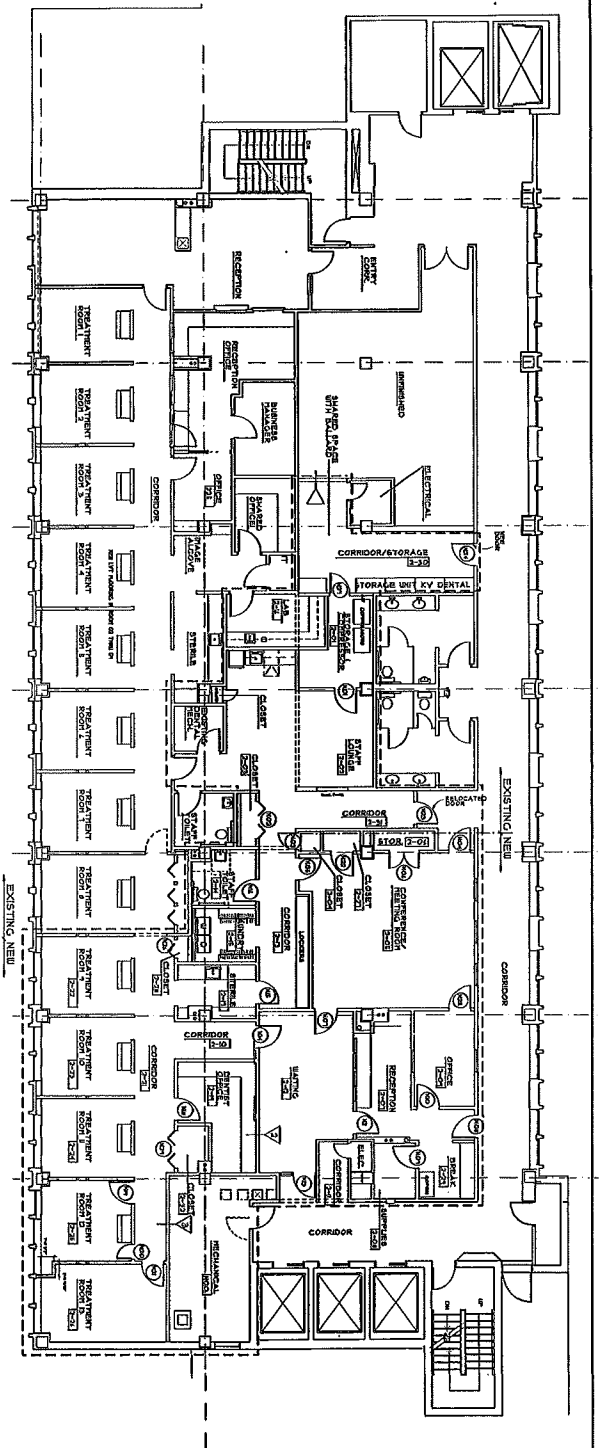
gp



PROJECT  
RENOVATIONS FOR  
KENNEBEC VALLEY FAMILY DENTISTRY  
AMBULATORY HEALTHCARE OCCUPANCY  
AUGUSTA, MAINE  
TITLE SHEET

DRAWN: VEGG  
CHECKED: GSP  
DATE: 06/04/2025  
SCALE: AS NOTED  
JOB NO.: 22008  
SHEET

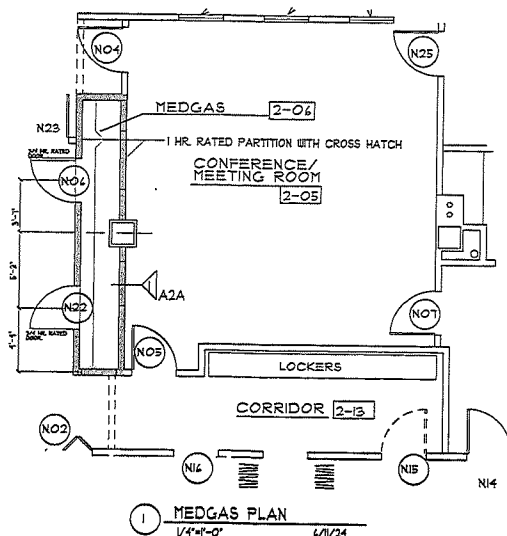
T1.1  
X OF X



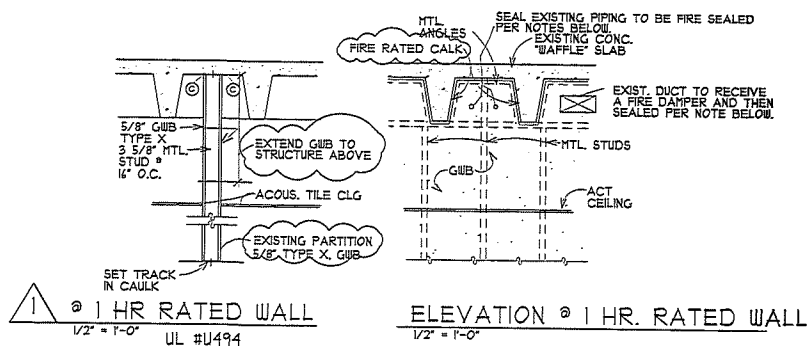
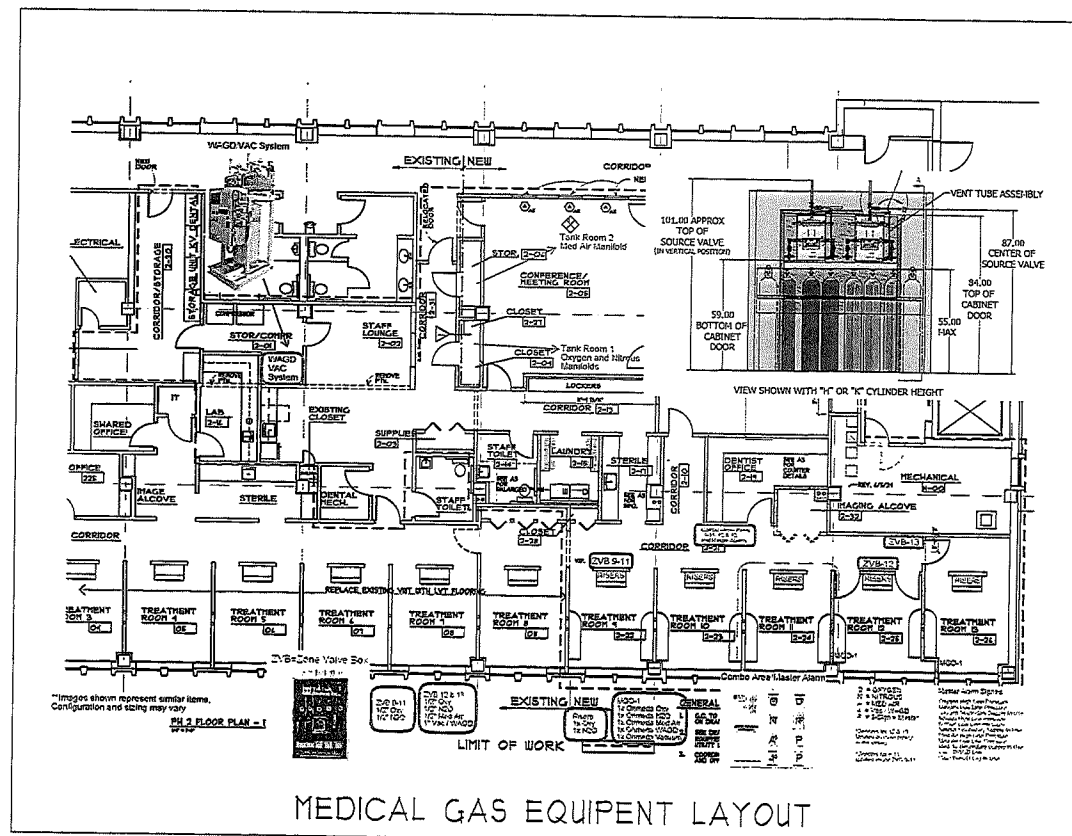
NOTES:  
1. PARTITION TYPES ARE  
ON Dwg. A-1

2/9/2014

<p>DATE: REVISIONS BY:</p> <p>11/20/2013 REVISION: GSP</p> <p>2/14/2014 REVISION: GSP</p>	<p>GEORGE S. PARKER ARCHITECT P.O. BOX 1000 BANGOR, ME 04401 PHONE: (207) 622-1111</p>	<p>REGISTERED ARCHITECT NO. 659 STATE OF MAINE</p>	<p>PROJECT:</p> <p>RENOVATIONS FOR KENNEBEC VALLEY FAMILY DENTISTRY AUGUSTA MAINE</p>
			<p>FLOOR PLAN- PHASE 2</p>
			<p>DRAWN: J. CLARK</p> <p>VELOC: GSP</p>
			<p>DATE: 5/24/2013</p> <p>SCALE: AS NOTED</p>
			<p>SHEET: 11 OF 11</p>



- NOTES:
1. SEE DETAIL 1 ON DRAWING A2A FOR CONSTRUCTION OF THE FIRE PARTITION.
  2. VENTILATION OF THE MEDICAL GAS ROOM SHALL MEET NFPA 99. THE DETAILED LAYOUT OF THE SYSTEM IS SHOWN ON DRAWING M-1.



#### FIRE PROTECTION CONSTRUCTION NOTES

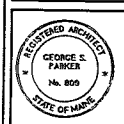
1. PENETRATIONS OF ALL EXISTING AND NEW DUCTWORK, PIPING AND WIRING OF FIRE RATED PARTITIONS SHALL BE SEALED PER FIRE CODE REQUIREMENTS. SEE ELEV. 1, THIS DWG.
2. ALL RATED CONSTRUCTION WILL REQUIRE INSPECTION BY BOTH THE STATE FIRE MARSHAL'S OFFICE AND THE CITY OF AUGUSTA. IT IS RECOMMENDED TO CONSULT WITH THEM PRIOR TO STARTING WORK.

#### MEDICAL GASS EQUIPMENT AND INSPECTION

1. A SEPARATE 34 PAGE SUBMITTAL DOCUMENT FROM TRI-TECH IS ENCLOSED. IT CONTAINS DETAILED INFORMATION ON ALL THE VALVE BOXES, ALARMS, MANIFOLDS IS INCLUDED AS A SEPARATE DOCUMENT FROM THE SET OF DRAWINGS.
2. PIPING AND ASSOCIATED VALVES, IDENTIFICATIONS ON PIPING, HAS BEEN ROUGHED IN AND INSPECTED BY BEACONFIELD AES LAST DECEMBER. THEIR REPORT IS INCLUDED AS PART OF THE PACKAGE.

REVISIONS	BY
1	GSP

GEORGE S. PARKER  
ARCHITECT  
P.O. BOX 1227 MAIN STREET  
BANGOR, ME 04401  
207-686-0704



PROJECT  
RENOVATIONS FOR PHASE 2a  
KENNEBEC VALLEY FAMILY DENTISTRY  
AMBULATORY HEALTHCARE OCCUPANCY  
AUGUSTA, MAINE  
MEDICAL GAS EQUIPMENT PLANS AND DETAILS

DRAWN :	CHECKED :
VECC	GSP
DATE :	06/10/2025
SCALE :	AS NOTED
JOB NO. :	22008
SHEET	

A2A



