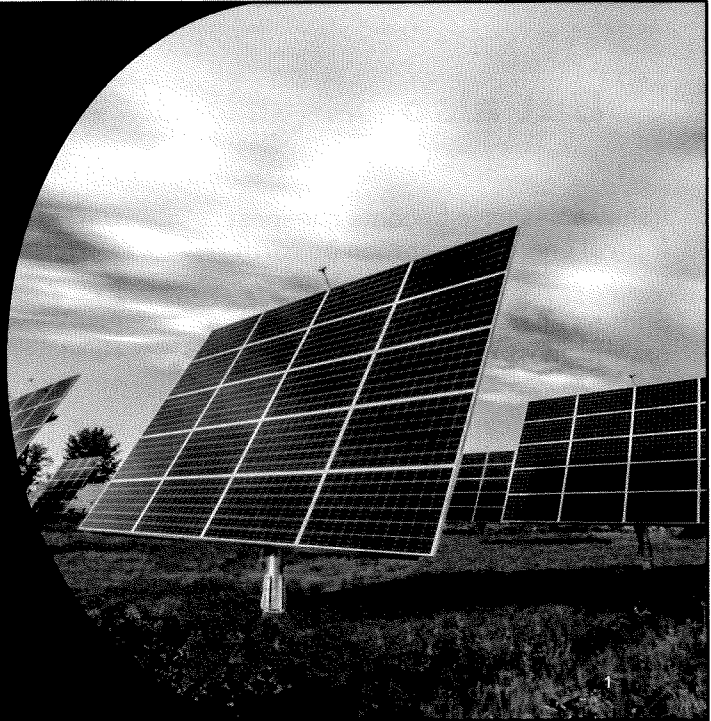


LD 1777

# Energy & Utilities Committee

May 2025

Maine Community Power Cooperative



1

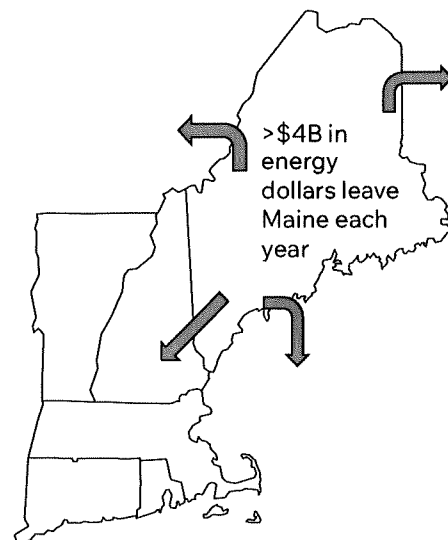
## Energy in Maine is too expensive

Why?

It isn't ours. We don't make, we don't own it

Generation and delivery infrastructure largely owned by multinationals, private equity, or foreign governments

Key cost drivers are structural



2

2

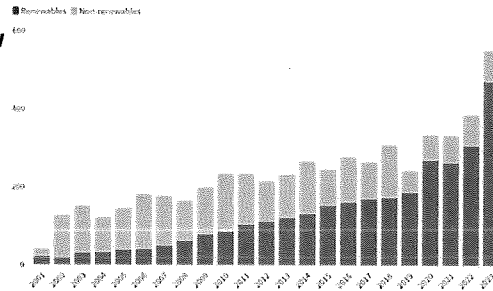
## But also

Renewables have become cheapest form of energy generation on earth

Shifting energy policies have enabled new business models and project types

Energy landscape is complex, policy dependent, political

**Most of the world's new power plants are clean energy**



CANARY MEDIA CHART OF THE WEEK

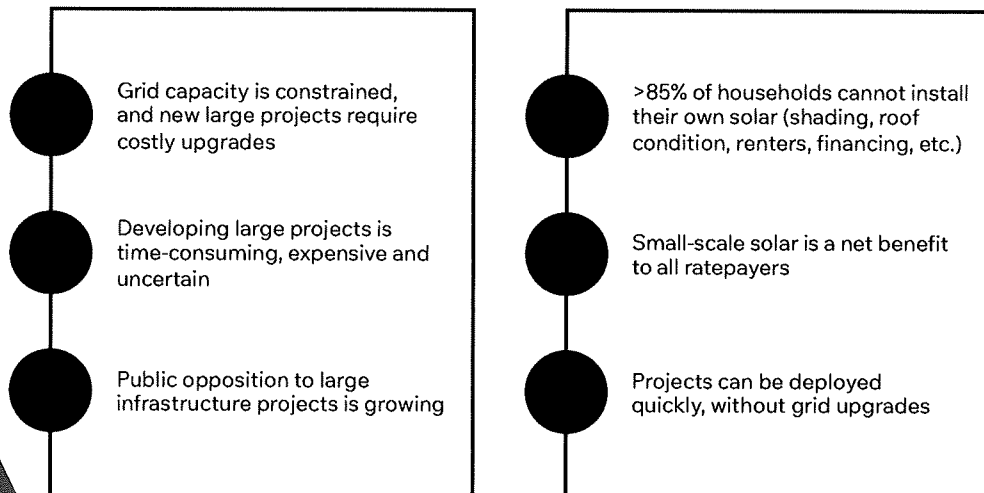


Who represents the ratepayers?

3

3

## We need community-scale energy



4

4

## What we do

Develop, own, and operate small-scale community solar projects on behalf of our members.

Part energy company, part social movement.

Our Mission is to provide **equitable access** to clean renewable energy. Our member-owned cooperative **lowers energy expenses** and improves resiliency through **solar power**, energy storage, efficiency and education. We empower communities, strengthen local economies, and promote ecological practices through **community-based** energy systems.



5

5

## How we're different

01

**Cooperative Ownership**

02

**Straightforward Customer Experience**

03

**Small Projects**

6

6

## Cooperative Ownership

- For-profit, but operate at cost
- Profits are reinvested and/or returned to members
- Membership is open to any residential or small business customer of Central Maine Power
- Priority for low- to moderate-income households, renters, and those who cannot otherwise install their own energy generation
- Join by purchasing one membership share per household/business (\$100)
- No recurring member investments
- Governed by elected board of directors, with professional staff



7

7

## With support from

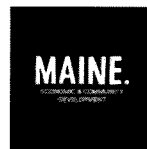


COOPERATIVE  
DEVELOPMENT  
INSTITUTE  
The Northeast Center  
for Cooperative Business

FUNDING THE FUTURE  
COOPERATIVE FUND  
OF THE NORTHEAST



U.S. DEPARTMENT OF  
**ENERGY**



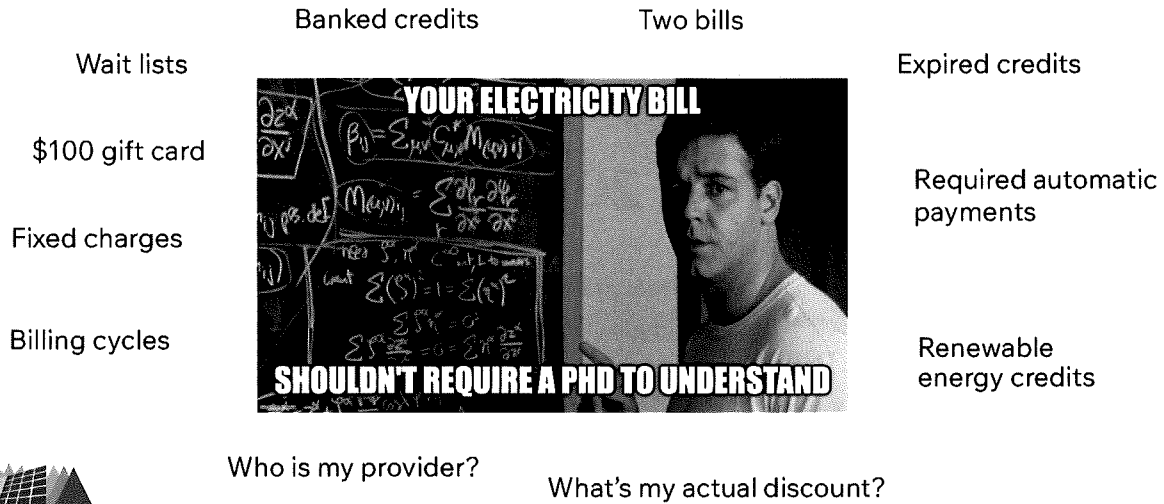
**FAME**  
FINANCE AUTHORITY OF MAINE



8

8

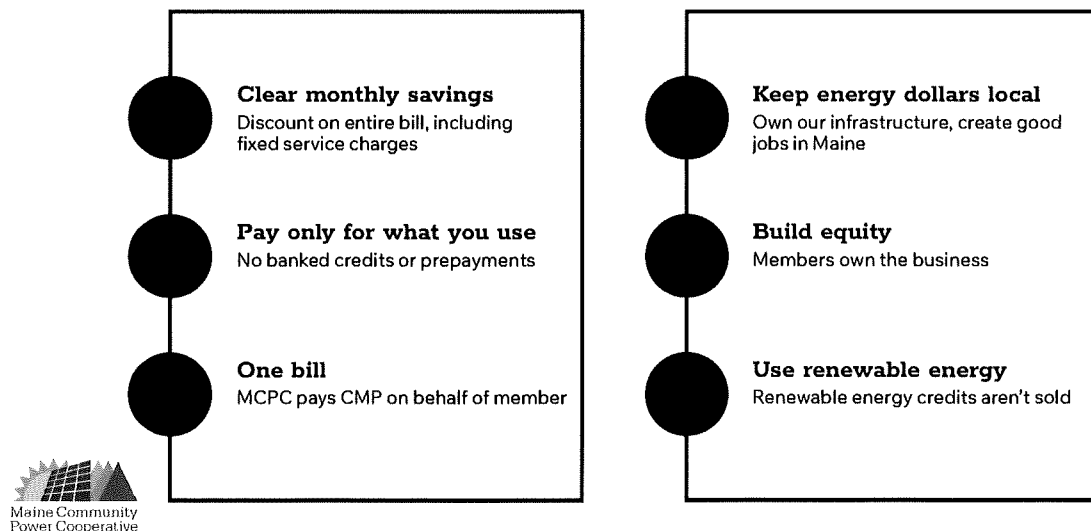
## Community solar is complicated



9

9

## We make it simple



10

10

## Whole-bill discount tiers

Residential	Income-eligible	Business/Solidarity
<b>15%</b>	<b>20%</b>	<b>10%</b>
Based on Rate A, standard offer prices	Based on 80% of area median income	Small general service accounts and voluntary supporters

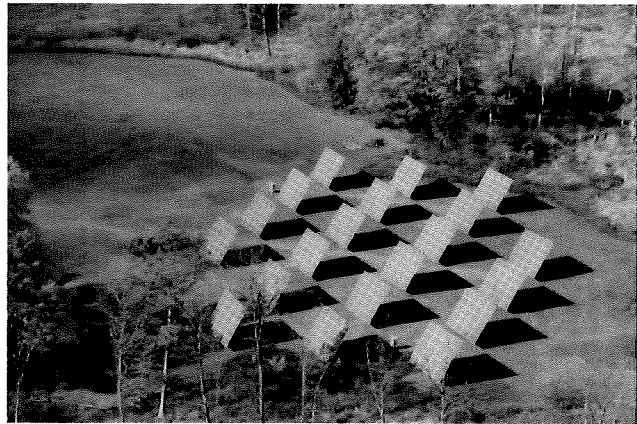


11

11

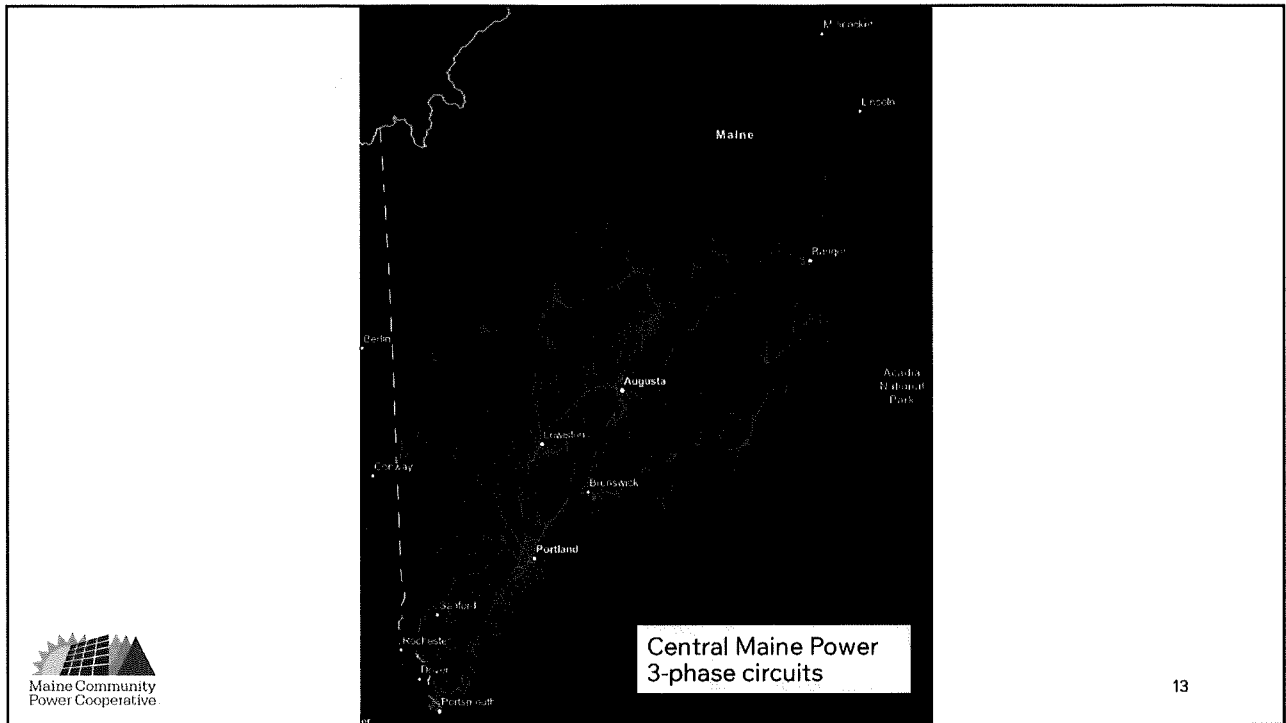
## Unique approach to project development

- Standard 1-acre footprint, utilizing 20 dual-axis trackers
- Generates energy for 50 average Maine households
- Ground underneath the panels used for growing, grazing, pollinator habitat, etc.
- Projects can be located anywhere on electric grid, including PFAS-impacted properties

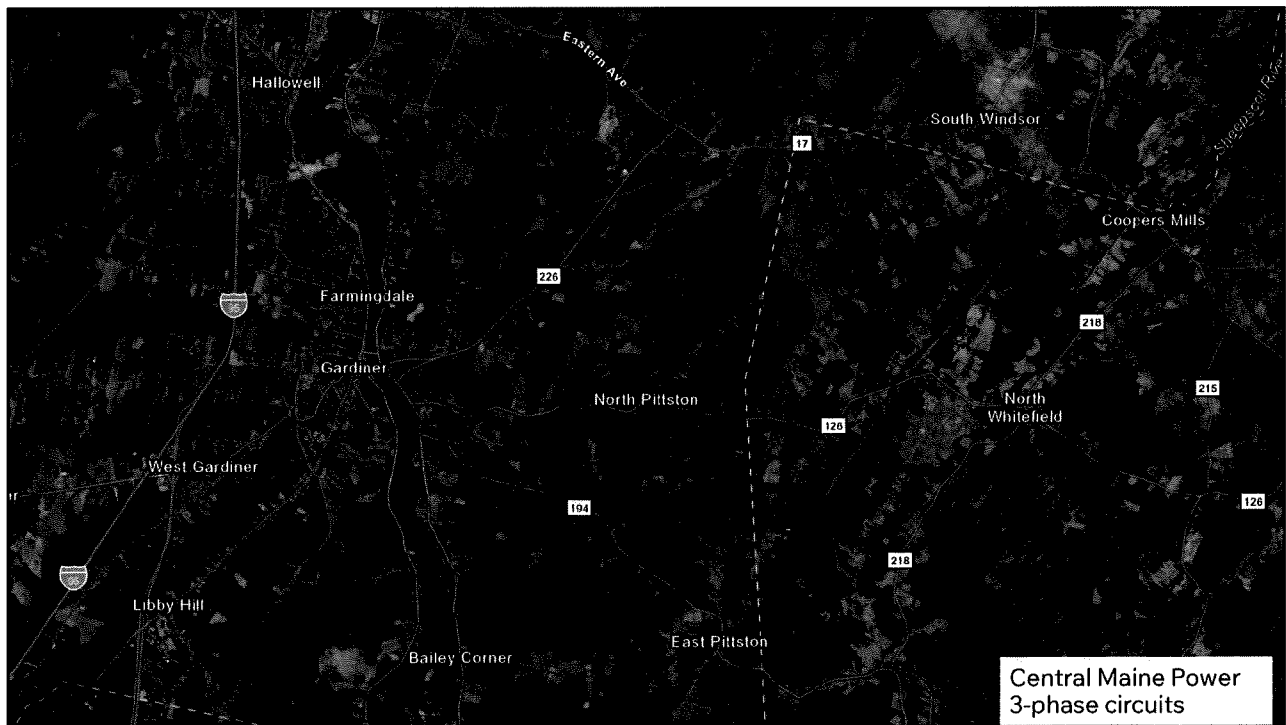


12

12



13

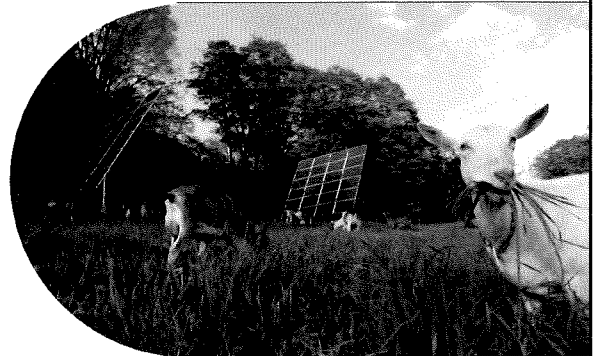


14



## How to get involved

- **01**    **Become a member**
- **02**    **Gift a membership**
- **03**    **Become a community partner**
- **04**    **Host a project**
- **05**    **Follow on social media**



**Thank You!**



17