

# LDs 32, 257, 359, 450, 515

Senator Lawrence, Representative Sachs, Members of the Energy, Utilities, and Technology Committee.

My name is Harold Booth I live in Hallowell. I've been investing in using solar energy for more than a decade. Attached you will see a record of my various solar projects and the power they've made over the years.

Key to being able to justify the expense [probably more than \$50K] of these various installations is the state's net-energy billing program.

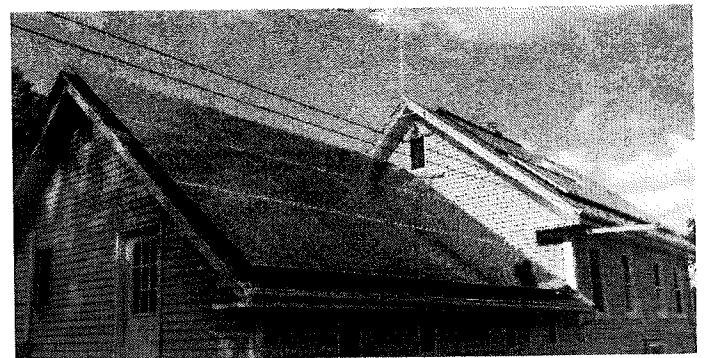
If you look at the column on the right – just to the left of the year – you'll see that I'm approaching \$17K in savings for having generated over 100,000 Kilowatts. Nice, but no-where near my costs. I could have been ahead financially had I invested my money elsewhere.

Aaaahhhh, but I have the satisfaction of knowing that I'm doing a good thing for the planet. I'm also helping everyone by producing lots of power on those hot summer days when the sun is beating down, and the power-companies would otherwise need to purchase 'peak power' at a much higher per-Kilo-watt rate to cover the AC-load, thus keeping their [and their customers'] rates down.

I also produce power where I – and my neighbors – are using it. My neighbors are going to use my [slightly-higher voltage] power first, before they draw power from the power-companies' line. That helps reduce the need for expensive distribution-system upgrades.

I urge you to keep the current net energy billing program in-place. It benefits everybody. Or if you modify it, add a time-of-day pricing component.

I'd be happy to try to answer any questions, and I can make myself available for the work-session – I live 10 minutes away.



Note: Panels on the upper roof too.

Electric	13 - Panel		Event	24 - Panel		8 - Panel	Total		Year
	Year net KWH	Per Panel		Electric Year net KWH	Per Panel		Electric Year net	Per Panel	
0	3,650	281	Start production May 24, 2012	0	0	0	3,650	\$511	2013
7,205	3,655	251		10,850	307	2,500	7,905	\$512	2014
11,000	3,695	284		18,670	326	2,740	11,000	\$517	2015
14,157	3,157	243	Change Year from May to April 22	14,157	145	0	14,157	\$442	2016
17,838	3,681	285		3,490	145	0	17,838	\$915	2017
21,349	3,511	270		10,850	307	0	24,839	\$980	2018
24,968	3,639	280	Trees cut 5-25-2019	18,670	326	0	35,838	\$1,540	2019
28,615	3,677	279		26,730	336	0	47,285	\$1,608	2020
32,381	3,766	290	Hot water to electric 12-31-2022	34,250	313	0	59,111	\$2,602	2021
35,968	3,587	276	Average & generation	42,340	327	2,500	70,218	\$2,444	2022
39,749	3,781	291		49,670	305	2,500	84,599	\$3,162	2023
43,189	3,440	265				5,240	98,099	\$2,972	2024