

MAINE EMS

AN OVERVIEW OF EMERGENCY MEDICAL SERVICES IN MAINE

J. Sam Hurley, MPH, EMPS, NRP
Director, Maine Bureau of EMS
September 1, 2022

WHAT IS MAINE EMS?

Often used interchangeably with three (3) concepts:

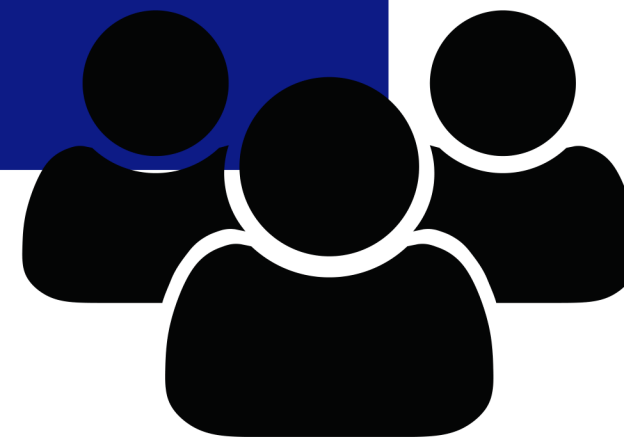
BUREAU OF EMS

Full-time employees based in Augusta, within the Department of Public Safety



BOARD OF EMS

Statutorily-defined Board that has statutory responsibility for EMS system oversight



EMS SYSTEM

The collection of clinicians, first responders, dispatch centers, resources, and medical directors throughout Maine



EMERGENCY MEDICAL SERVICES SYSTEM

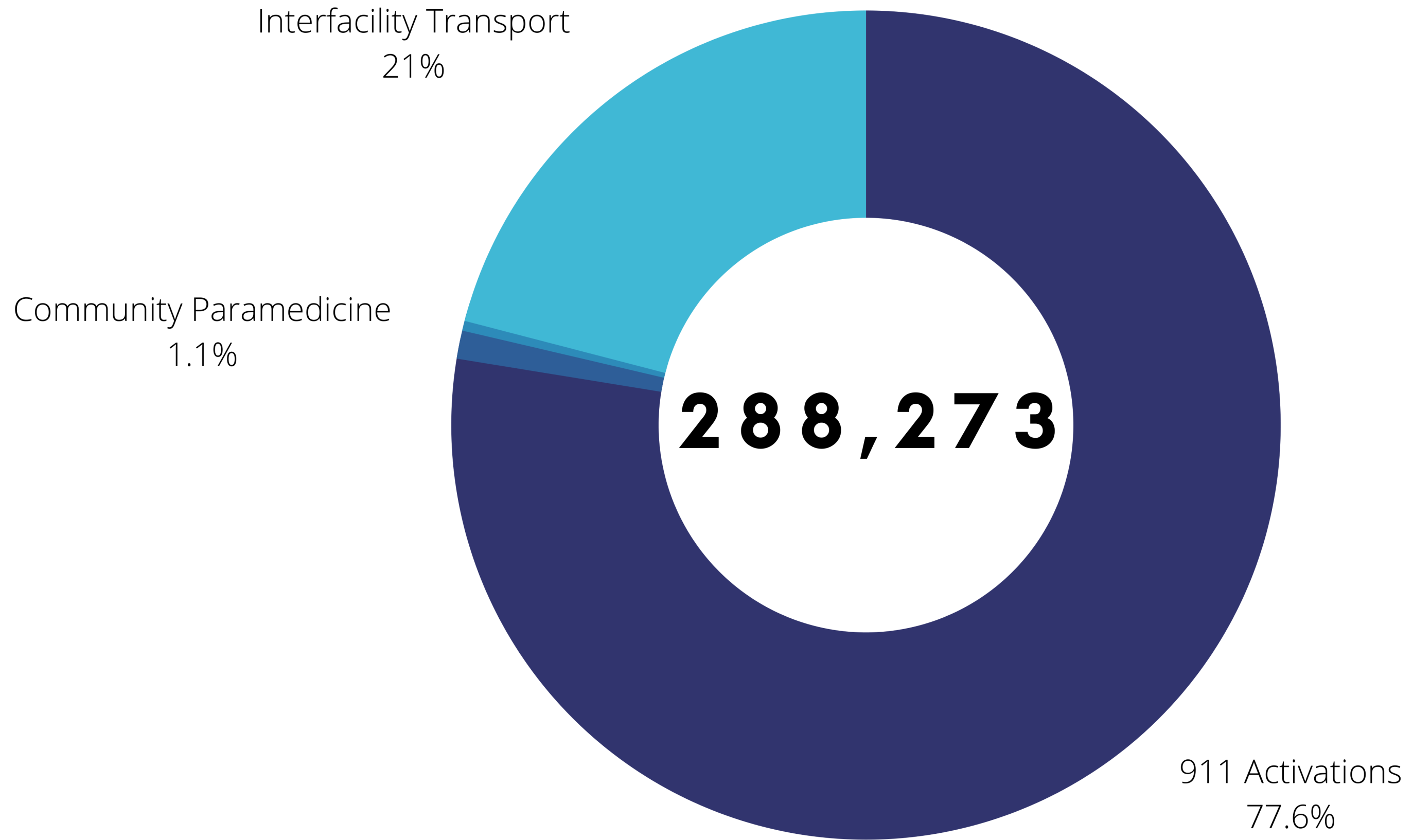
Activation of 911 System and EMD

Interfacility Transport to Tertiary Facility

911 Response



2021 STATEWIDE CALL VOLUME



THE REGULATED COMMUNITY



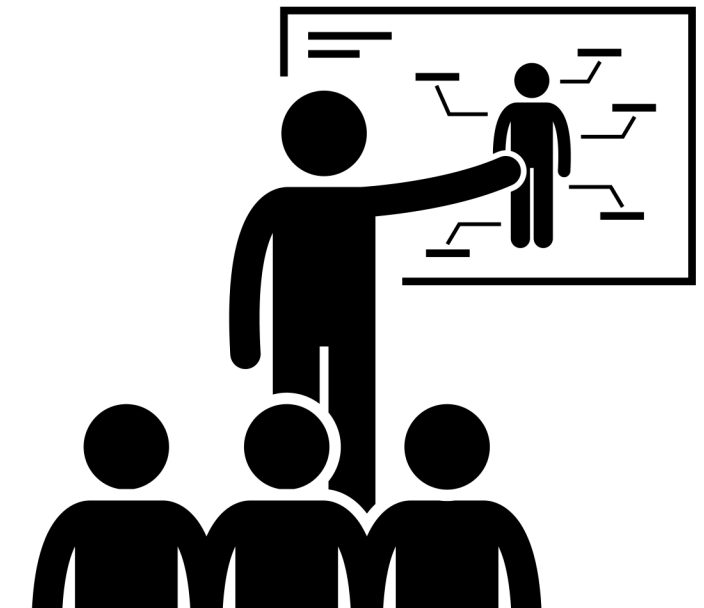
- Emergency Medical Dispatchers (EMDs)
- Emergency Medical Dispatch Centers (EMD Centers)



- EMS Ambulance Operators
- Emergency Medical Responders (EMRs)
- Emergency Medical Technicians (EMTs)
- Advanced EMTs
- Paramedics

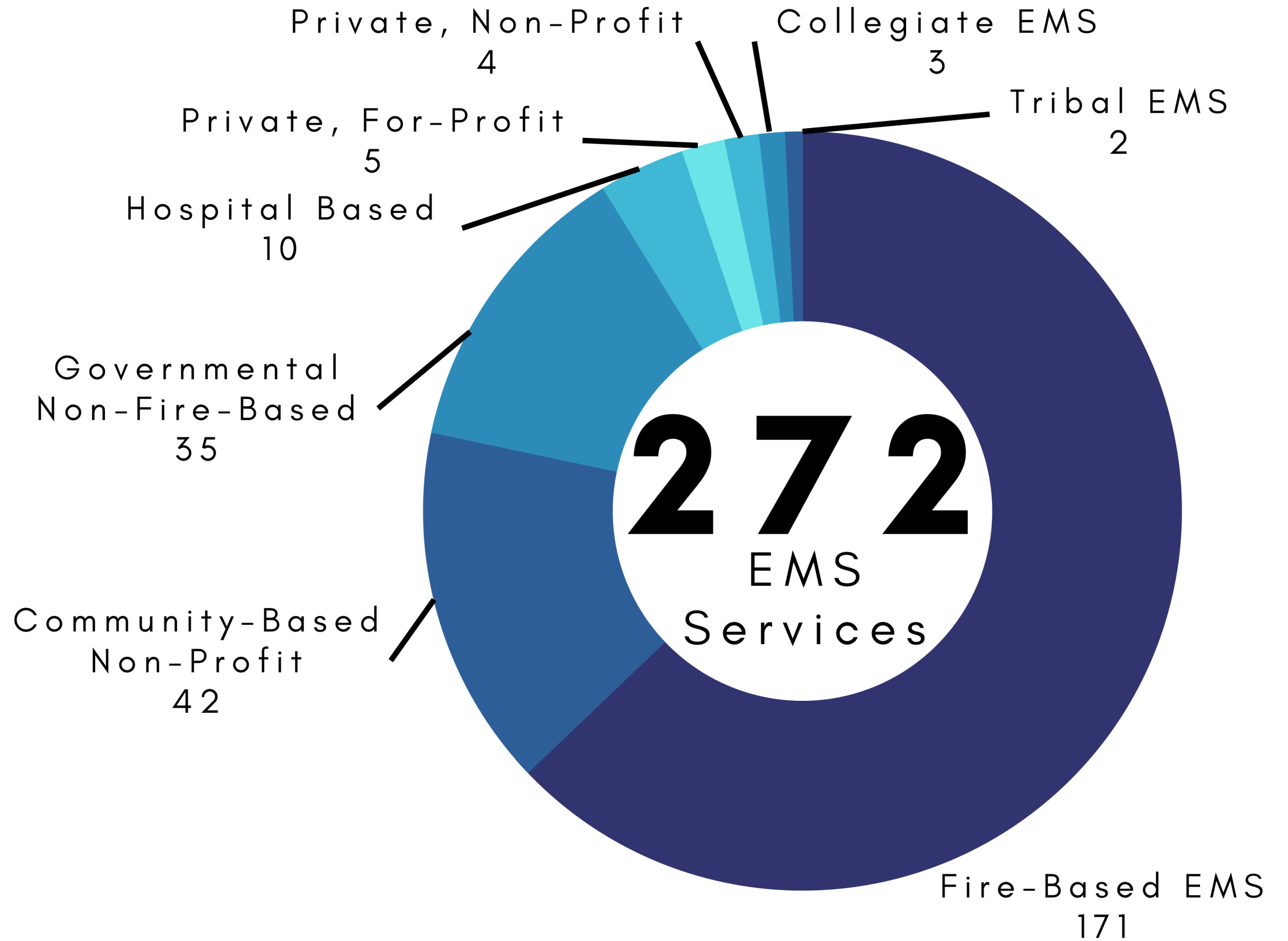
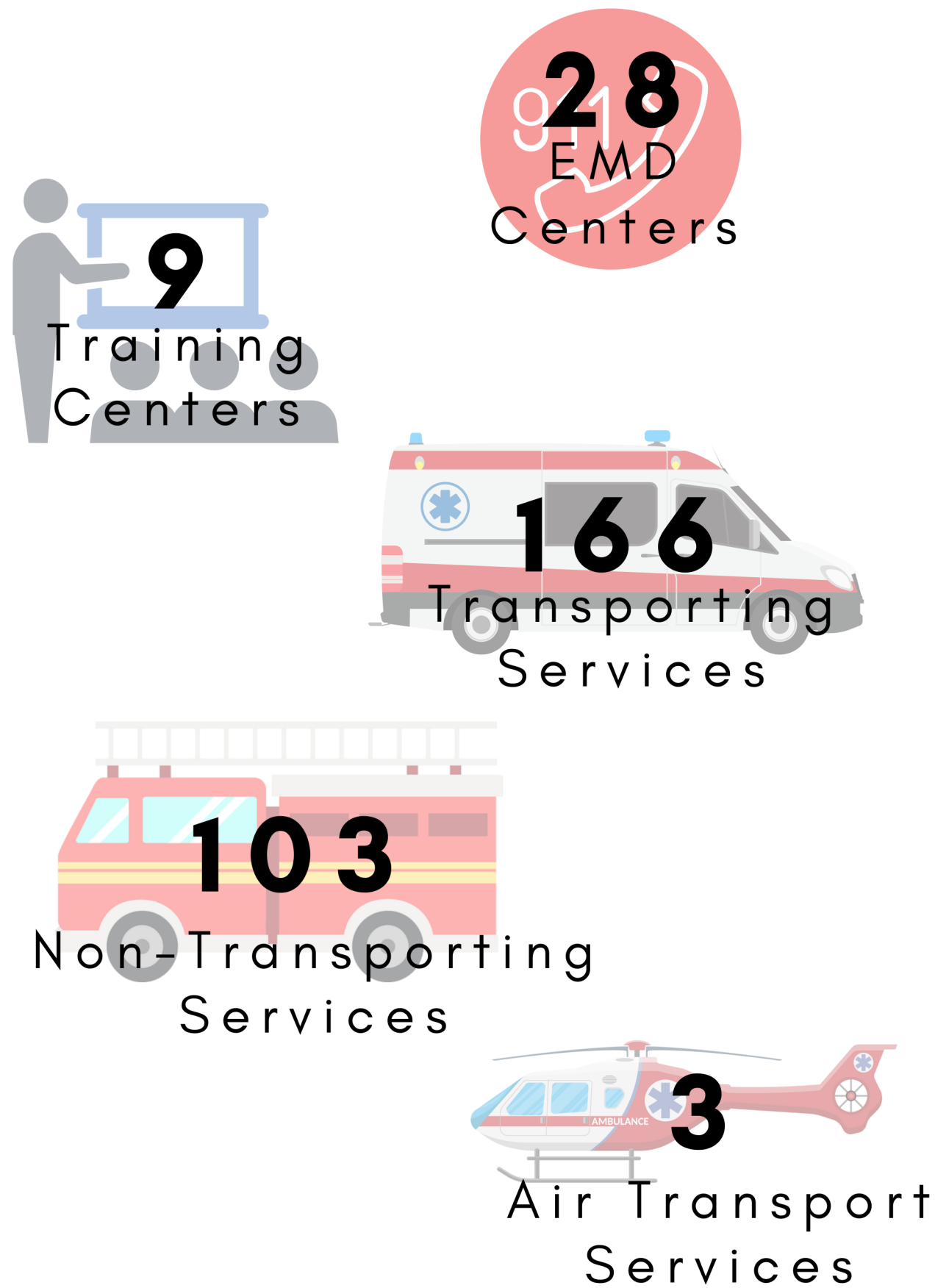


- Non-Transporting Services
- Transporting Services
- Air Medical Services
- Emergency Vehicles (Ambulances, Response Vehicles, Air Ambulances)



- EMS Training Centers
- Instructors/ Coordinators
- Continuing Education Courses
- Initial Education Courses

REGULATED ENTITIES IN MAINE



PERCENTAGE OF SERVICES BY CALL VOLUME

Number of Responses	Percentage of Services
10,000 or more	2%
5,000 to 9,999	2%
2,500 to 4,999	5%
1,000 to 2,499	13%
500 to 999	14%
100 to 499	30%
0-99	34%

64%

Fewer than 500
annual responses

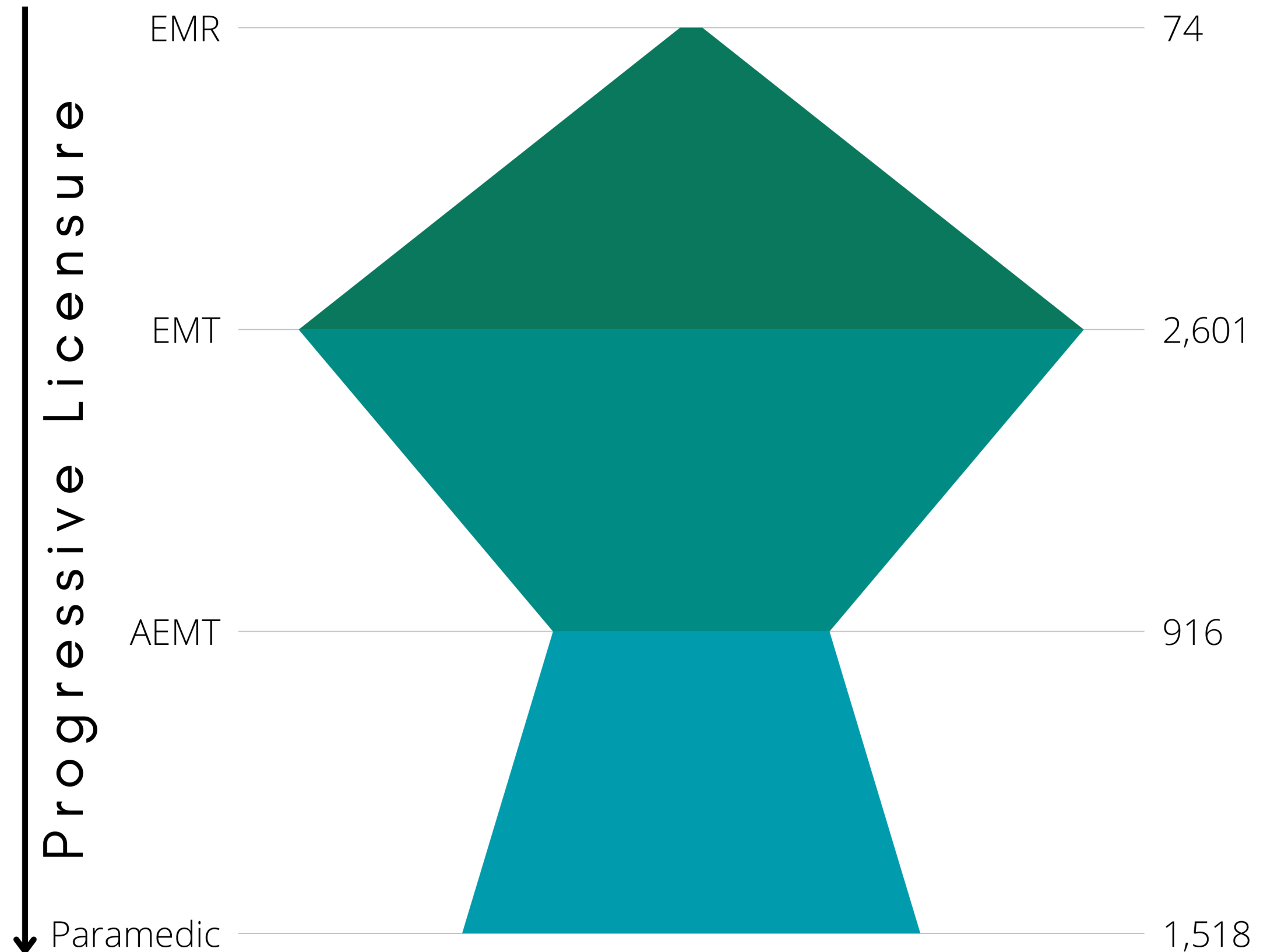
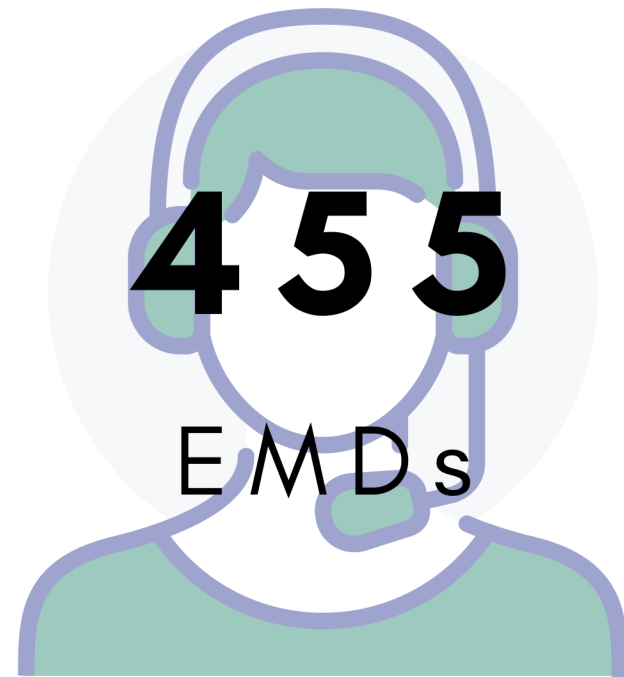
26%

Fewer than 50
annual responses

56%

Averaged less than
1 call per day

LICENSED PERSONS



J. Sam Hurley, MPH, EMPS, NRP

THANK YOU!

j.sam.hurley@maine.gov
(207) 626-3865

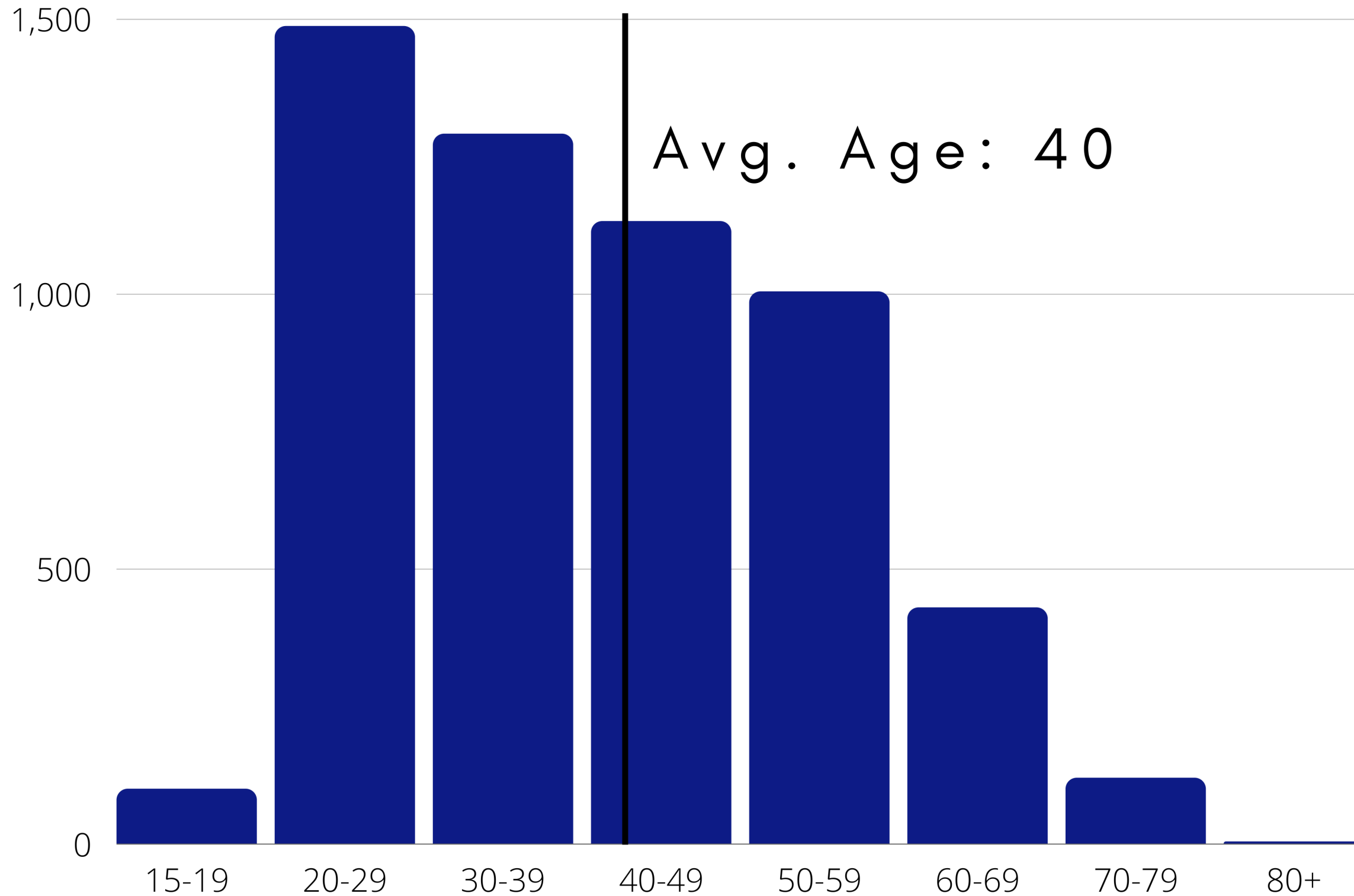
APPENDICIES

LICENSED ENTITIES BY COUNTY

County	Transporting EMS Services*	Non-Transporting EMS Services	Air Ambulance Services*	EMD Centers	Training Centers
Androscoggin	7	9		2	2
Aroostook	12	2		1	2
Cumberland	29	3		5	1
Franklin	1	9		1	
Hancock	9	13		1	
Kennebec	8	9		2	2
Knox	9		2	1	
Lincoln	4	8		1	
Oxford	8	6		1	
Penobscot	21	16	1	2	2
Piscataquis	3	5		1	
Sagadahoc	6	4		1	
Somerset	6	9		1	
Waldo	9	1		1	
Washington	10	4		1	
York	22	5		6	
Massachusetts	1				
New Hampshire	1				
Total	166	103	3	28	9

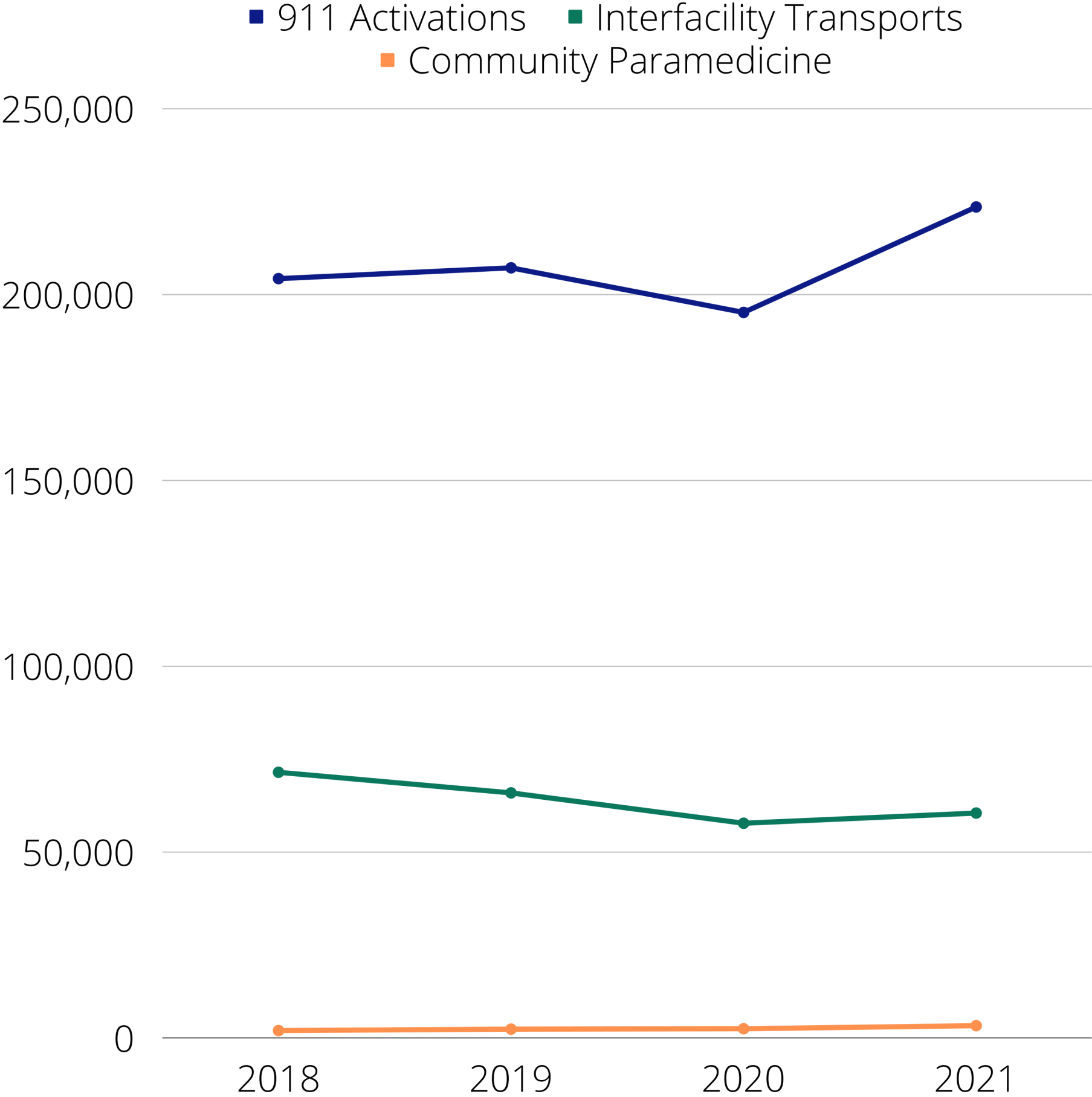
*Note - some services may have service bases/stations in multiple counties. Only the primary base is listed.

LICENSED PERSONS AND THEIR AGE



License Level	Average Age
EMD	39
EMR	54
EMT	38
AEMT	42
Paramedic	43

EMS ACTIVATION TRENDS



MAINE EMS REGIONAL STRUCTURE

