

USM Health Policy Analysis & Research Capacity

***Presentation to the
HCIFS Committee
October 21, 2019***

Erika Ziller, PhD,
Kimberley Fox, MPA
Yvonne Jonk, PhD

Muskie School of Public Service
University of Southern Maine



Agenda

- Overview of USM's Muskie School health policy & health services research history
- Research, policy and data analytic infrastructure and capacity
- Examples of current and prior projects and staff areas of expertise
- Examples of state/university partnerships in other states

Cooperative Agreement History

History of State-University Cooperation

Established in by Legislative statute in 1989:
5 MRSA 1825-b (Executive Order amendment
in 2011, limiting use/Governor approval)

Benefits:

- Leverage UMS expertise
- Mutual research agenda
- Rapid response
- Enhanced access to federal matching funds



History of State-University Cooperation

Under CAs, Muskie School faculty & staff provided health care technical assistance, data analysis, evaluation & research for:

- Governor's Office of Health Care Policy
- Dirigo Health Agency
- Maine Quality Forum
- Office of MaineCare Services, Office of Aging & Disability Services and others (including Legislature-required reports)

Examples of Muskie School Expertise and Experience

Maine Rural Health Research Center (mrhrc.org)

Established in 1992, the Maine Rural Health Research Center conducts applied research on federal/state policy, with emphasis on:



- Health reform
- Insurance coverage
- Long term services & supports
- Behavioral health

Rural Telehealth Research Center

Federally-funded partnership with Universities of Iowa and North Carolina to evaluate HRSA telehealth programs

- Using APCD data to assess impact of telehealth policies on rural & urban use in Maine



MaineCare Policy Analyses, Evaluation & Research

- MaineCare Health Homes Evaluation
- Improving Health Outcomes for Children Evaluation (CHIPRA Quality Demo grant)
- Best practice research on other state models (e.g. premium support, elderly coverage gaps post Medicare Part D)
- Legislative reports (e.g., adult dental benefits)

MaineCare Policy Analyses, Evaluation & Research

- Children's Health Insurance Program (CHIP) annual survey of parents
- Medicaid expansion support and analyses
 - Federally-required evaluation of the childless adult Medicaid expansion waiver under the Dirigo Health Act
 - Assessing health system capacity and outreach/enrollment in current Medicaid expansion (pending approval)

Health Insurance Coverage and Health Reform Research

- *Dirigo Health Reform* planning & analyses supported by HRSA State Planning Grant



- Evaluation of *State Health Access Program* to offer affordable coverage to uninsured low-income part-time & seasonal workers

Health Insurance Coverage and Health Reform Research

- Robert Wood Johnson Foundation (RWJF) SHARE evaluation of health reform in ME, MA, and VT
- Evaluation of Maine's Multi-Payer *Patient Centered Medical Home Pilot*



Health Insurance Coverage and Health Reform Research

The Muskie School has also used external grant funding to support Maine-specific analyses:

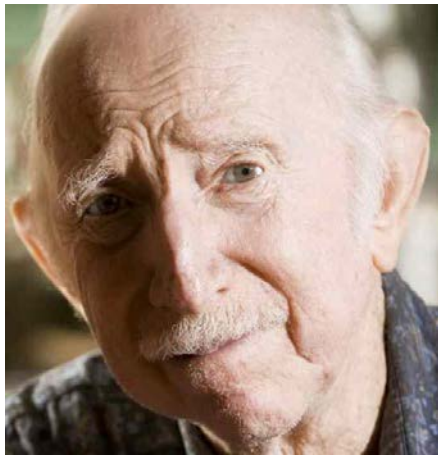
- Ongoing support from the Maine Health Access Foundation (MeHAF) to track post-ACA insurance coverage and access to care
- RWJF *Cost Conversations* pilot study examined opportunities for health care providers to support cost transparency



Health Insurance Coverage and Health Reform Research

Muskie School grant funds have also supported MaineCare and other data linkages & analysis

- US NIMH funding to link data sets and support analysis of health care use among adults with mental illness & diabetes
- US DOJ funding to study health care use and costs among adults receiving protective services



Maine Quality Forum

- Identifying quality & patient safety measures from existing data for public reporting (e.g. hospital discharge data/APCD)

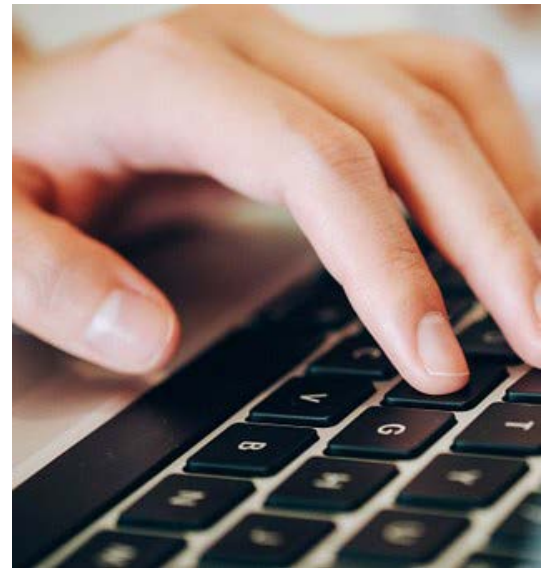


- Analyses of MQF-subsidized primary care patient experience of care surveys
- Quality and cost-related analyses required by legislation (e.g., LD 1353 – *Primary Care Spending Report*)

USM Health Data Analytics Research Cluster

Maine Economic Improvement Fund initiative to support workforce training and research with state and community partners (MHDO, Maine Medical Center Research Institute)

- MOU to use APCD & hospital data for mutual projects
- APCD training modules
- MMCRI collaborative research proposals



USM Health Data Analytics Research Cluster

Data Analytic Center Strategic Plan: Options for expanding the Muskie School's data analytic architecture to support broader public health and data analysis role

- Data warehouse maintenance and expansion
- Testing common data models to support cross-state research
- Opportunities for new data linkage



State University Partnership Learning Network

- Formed by AcademyHealth in 2014
- Supports peer-to-peer learning and share/spread best practices in state health policy research.
- Currently includes 27 universities in 23 states with master agreements between the state university and state Medicaid & other state agencies

State University Partnership Learning Network

- Opportunity for cross-state Medicaid (and APCD) research
 - *Medicaid distributed research network opioid use disorder (MDRN OUD) project*
- Medicaid is a primary focus, but SUPLN members also support & evaluate health reform efforts (e.g., population health, patient experience, cost containment)



Contact Information

Erika Ziller, PhD

erika.ziller@maine.edu

207-780-4615

Kimberley Fox

kimberley.s.fox@maine.edu

207-780-4950

Yvonne Jonk, PhD

yvonne.jonk@maine.edu

207-228-8038



mrhrc.org

[@MERuralHealth](#) [@USMPublicHealth](#)

Questions?