

REP. RYAN D. FECTEAU  
CHAIR

SEN. MATTHEA E.L. DAUGHTRY  
VICE-CHAIR

EXECUTIVE DIRECTOR  
SUZANNE M. GRESSER



132<sup>nd</sup> MAINE STATE LEGISLATURE  
LEGISLATIVE COUNCIL

SEN. TERESA S. PIERCE  
SEN. JILL C. DUSON  
SEN. HAROLD "TREY" STEWART, III  
SEN. MATTHEW HARRINGTON  
REP. MATTHEW MOONEN  
REP. LORI GRAMLICH  
REP. BILLY BOB FAULKINGHAM  
REP. KATRINA SMITH

**January 22, 2026  
1:30 PM  
REVISED AGENDA**

<b><u>Page</u></b>	<b><u>Item</u></b>		<b><u>Action</u></b>
		<b>CALL TO ORDER</b>	
		<b>ROLL CALL</b>	
		<b>SUMMARY OF THE NOVEMBER 20, 2025 MEETING OF THE LEGISLATIVE COUNCIL</b>	<b>Decision</b>
		<b>REPORTS FROM STAFF OFFICE DIRECTORS</b>	
		<ul style="list-style-type: none"><li>Fiscal Report (Director Nolan)</li></ul>	<b>Information</b>
		<ul style="list-style-type: none"><li>Legislative Studies Report (Director Fox)</li></ul>	<b>Information</b>
		<b>REPORTS FROM COUNCIL COMMITTEES</b>	
		<ul style="list-style-type: none"><li>Personnel Committee</li></ul>	<b>Information</b>
		<b>OLD BUSINESS</b>	
Page 10	Item #1	Council Actions Taken by Ballot (No Action Required)	<b>Information</b>
		<b>NEW BUSINESS</b>	
Page 11	Item #1	Consideration of Requests for After-Deadline Bills and Certain Joint Resolutions	<b>Roll Call Vote</b>
Page 14	Item #2	Update on State House HVAC Study	<b>Information</b>
Page 96	Item #3	Acceptance of Report of Commission to Recommend Methods for Preventing Deed Fraud	<b>Acceptance</b>
Page 102	Item #4	Acceptance of Report of Commission Evaluate Scope of Regulatory Review and Oversight over Health Care Transactions that Impact the Delivery of Health Care Services in the State	<b>Acceptance</b>
Page 109	Item #5	Acceptance of Report of Commission to Expand Access to Oral Health Care by Studying Alternative Pathways for Obtaining a License to Practice Dentistry	<b>Acceptance</b>

Page 115	Item #5-A	Acceptance of 20 <sup>th</sup> Annual Report of the Right to Know Advisory Committee	<b>Decision</b>
	Item #6	Implementation of Executive Branch Notification System for Notification of Events	<b>Information</b>
	Item #7	Update on State House Security Measures (Executive Session)	

REP. RYAN D. FECTEAU  
CHAIR

SEN. MATTHEA E.L. DAUGHTRY  
VICE-CHAIR

EXECUTIVE DIRECTOR  
SUZANNE M. GRESSER



132<sup>nd</sup> MAINE STATE LEGISLATURE  
LEGISLATIVE COUNCIL

SEN. TERESA S. PIERCE  
SEN. JILL DUSON  
SEN. HAROLD "TREY" STEWART, III  
SEN. MATTHEW HARRINGTON  
REP. MATTHEW MOONEN  
REP. LORI GRAMLICH  
REP. BILLY BOB FAULKINGHAM  
REP. KATRINA SMITH

**LEGISLATIVE COUNCIL  
MEETING SUMMARY**  
November 20, 2025

**CALL TO ORDER**

Speaker Fecteau called the November 20, 2025 meeting of the 132<sup>nd</sup> Legislative Council to order at 10:07 a.m. in the Legislative Council Chamber.

**ROLL CALL**

Senators:	President Daughtry, Senator Pierce, Senator Duson, Senator Stewart, and Senator Harrington
Representatives:	Speaker Fecteau, Representative Moonen, Representative Gramlich (via Zoom), Representative Faulkingham (arrived after roll call, via Zoom), and Representative Smith
Legislative Officers:	Suzanne Gresser, Executive Director of the Legislative Council Darek Grant, Secretary of the Senate Michelle Dunphy, Assistant Clerk of the House Ed Charbonneau, Revisor of Statutes Danielle Fox, Director, Office of Policy and Legal Analysis Christopher Nolan, Director, Office of Fiscal and Program Review Nik Rende, Director, Office of Legislative Information Technology

Speaker Fecteau convened the meeting at 10:07 a.m. with a quorum of members present.

Speaker Fecteau announced his intention to take items out of order, and hearing no objection, moved to New Business.

**NEW BUSINESS**

**Item #1: Procedures for Deciding Appeals for Bill Requests; Consideration of Appeals**

Ms. Gresser reviewed the procedures for the proposed procedures for deciding appeals for legislator bill requests for the Second Regular Session.

**Motion:** That the Legislative Council approves the proposed Procedures for Deciding Appeals for Bill Requests for the Second Regular Session. Motion by President Daughtry. Second by Sen. Stewart. **Motion passed unanimously (9-0-0-1**, with Representative Faulkingham absent).

The Legislative Council proceeded to consider and vote on the appeals in accordance with the outlined protocol, and using an electronic voting system. Of the 81 appeals, the Legislative Council authorized sixteen (16) bills for introduction in the Second Regular Session. Five (5) bill requests were withdrawn by the sponsors prior to the Legislative Council's vote. The Legislative Council's action on the bill requests is attached.

## **Item #2: Consideration of Requests for After-Deadline Bills and Certain Joint Resolutions**

The Legislative Council proceeded to consider and vote on two (2) after-deadline bill requests. With respect to the after-deadline bill requests, the Legislative Council accepted for introduction one (1) request, and rejected one (1) request. The Legislative Council's action on the requests is attached to this meeting summary.

Following the Legislative Council's consideration of appeals and requests for after-deadline bills, the Speaker announced that he would return to items on the printed agenda following a short break in the meeting.

## **REPORTS FROM EXECUTIVE DIRECTOR AND COUNCIL OFFICES**

### **Executive Director's Report**

Suzanne Gresser, Executive Director of the Legislative Council, presented the Executive Director's report found in the agenda packet.

### **Fiscal Report**

Christopher Nolan, Director of the Office of Fiscal and Program Review, presented the fiscal report found in the agenda packet.

### **Studies Report**

Danielle Fox, Director of the Office of Policy and Legal Analysis, presented the studies report found in the agenda packet.

## **REPORTS FROM COUNCIL COMMITTEES**

None

## **OLD BUSINESS**

### **Council Actions Taken by Ballot**

Requests for Introduction of Legislation:



**LR 2952      An Act to Clarify and Strengthen the Government Shutdown Loan Guarantee Program**

Submitted by: Representative Mathieson

Date: November 14, 2025

Vote: 6-0-0-4 Passed (with Senator Stewart, Senator Harrington, Representative Faulkingham, and Representative Smith recorded as absent)

**SUMMARY OF THE OCTOBER 23, 2025 MEETING OF THE LEGISLATIVE COUNCIL**

**Motion:** That the Meeting Summary for October 23, 2025 be accepted and placed on file. Motion by Representative Moonen. Second by President Daughtry. **Motion passed (7-0-0-3,** with Senator Stewart, Representative Gramlich, and Representative Faulkingham recorded as absent).

**ANNOUNCEMENTS AND REMARKS**

With no other business to consider or further announcements, the Legislative Council meeting was adjourned at 2:16 p.m.

**132st Legislature - Second Regular Session**  
**Legislative Council Action on Legislative Bill Requests**  
**November 20, 2025**

---

		Action
<b>Representative Arford of Brunswick</b>		
LR 2787	An Act to Allow a Municipality to Adopt a Model Ordinance That Prohibits the Possession of Firearms in Municipal Buildings Where Municipal Public Proceedings Take Place	<b>FAILED</b>
<b>Senator Bailey of York</b>		
LR 2743	An Act to Clarify the Prohibition on Paper Statement Fees for Financial Institutions	<b>PASSED</b>
<b>Senator Baldacci of Penobscot</b>		
LR 2900	An Act to Create the Bangor Mall Redevelopment District	<b>FAILED</b>
<b>Senator Beebe-Center of Knox</b>		
LR 2910	An Act to Support Children's School Readiness	<b>FAILED</b>
<b>Representative Brennan of Portland</b>		
LR 2869	An Act to Establish the Maine Nonprofit Security Grant Program	<b>PASSED</b>
<b>Senator Brenner of Cumberland</b>		
LR 2854	An Act to Invest in Maine's Natural Resources Economy	<b>PASSED</b>
<b>Representative Collamore of Pittsfield</b>		
LR 2756	An Act to Clarify the Definition of "Domestic Partnership"	<b>FAILED</b>
<b>Representative Crafts of Newcastle</b>		
LR 2732	An Act to Dissolve the Great Salt Bay Community School District	<b>PASSED</b>
<b>Senator Curry of Waldo</b>		
LR 2893		<b>FAILED</b>

**132st Legislature - Second Regular Session**  
**Legislative Council Action on Legislative Bill Requests**  
**November 20, 2025**

---

		Action
<b>Senator Curry of Waldo</b>		
	An Act to Support Homeowners in Building Affordable Accessory Dwelling Units	
LR 2894		<b>FAILED</b>
	An Act to Strengthen Emergency Medical Services by Increasing MaineCare Reimbursement Rates for Ambulance Services	
LR 2949		<b>FAILED</b>
	An Act to Establish a Pilot Project to Stabilize Housing for Former Foster Children	
<b>Senator Cyrway of Kennebec</b>		
LR 2751		<b>FAILED</b>
	An Act to Promote Environmentally Sound Energy Transmission Infrastructure Siting in the State	
<b>President Daughtry of Cumberland</b>		
LR 2913		<b>FAILED</b>
	An Act to Prevent the Reduction of Services at Acute Care Hospitals	
<b>Representative Dill of Old Town</b>		
LR 2718		<b>FAILED</b>
	An Act to Amend the Laws Governing Conservation Easements	
LR 2748		<b>PASSED</b>
	An Act to Prohibit Landfill Expansion into Wetlands	
<b>Representative Ducharme of Madison</b>		
LR 2916		<b>FAILED</b>
	An Act to Update Certain Duties of the Technical Building Codes and Standards Board	
<b>Representative Friedmann of Bar Harbor</b>		
LR 2758		<b>FAILED</b>
	An Act to Make Small, Portable, Plug-in Solar Generation Devices Accessible for All Maine Residents to Address the Energy Affordability Crisis	
<b>Representative Frost of Belgrade</b>		
LR 2645		<b>FAILED</b>

**132st Legislature - Second Regular Session**  
**Legislative Council Action on Legislative Bill Requests**  
**November 20, 2025**

---

		Action
<b>Representative Frost of Belgrade</b>		
An Act to Reinstate Content Specialists Within the Department of Education		
<b>Representative Gattine of Westbrook</b>		
LR 2753	An Act to Support Quality Health Care Through the Statewide Health Information Exchange	<b>PASSED</b>
<b>Representative Geiger of Rockland</b>		
LR 2648	An Act to Establish a State Property Tax Directed Toward 2nd Homes for the Purposes of Funding Education, Early Childhood Programs and the Land for Maine's Future Trust Fund	<b>FAILED</b>
LR 2709	An Act to Modify Provisions of Law That Negatively Impact Distilleries	<b>PASSED</b>
<b>Representative Golek of Harpswell</b>		
LR 2730	An Act to Promote Home Ownership for Tenants	<b>FAILED</b>
LR 2770	An Act to Clarify Certain Laws Regarding Rent or Fee Increases for Manufactured Housing Communities	<b>FAILED</b>
<b>Representative Gramlich of Old Orchard Beach</b>		
LR 2733	An Act to Promote the Responsible Management of State-owned Landfills by Requiring the Submission of Certain Safety, Accountability and Financial Information in the Competitive Bidding Process	<b>FAILED</b>
<b>Senator Grohoski of Hancock</b>		
LR 2840	An Act to Establish Administrative Review Procedures for State Property Access Restrictions	<b>PASSED</b>
LR 2842	An Act to Amend Maine's Campaign Finance Laws Regarding Foreign Government Influence	<b>FAILED</b>
LR 2936		<b>WITHDRAWN</b>

**132st Legislature - Second Regular Session**  
**Legislative Council Action on Legislative Bill Requests**  
**November 20, 2025**

---

		Action
<b>Senator Grohoski of Hancock</b>		
	An Act to Enact the Public Sector Recommendations of the Maine Artificial Intelligence Task Force	
LR 2937		<b>FAILED</b>
	An Act to Enact the Potential Harms Recommendations of the Maine Artificial Intelligence Task Force	
LR 2942		<b>PASSED</b>
	An Act to Clarify Certain Laws Governing Licenses for the Sale of Liquor by Manufacturers	
LR 2944		<b>WITHDRAWN</b>
	An Act to Encourage Timely Contract Negotiations Between Major Health Insurers and Hospital Systems by Establishing a Daily Fine in an Amount Equal to the Annual Compensation Package of the Entities' Respective Chief Executive Officers Per Day That the Contract Lapses	
<b>Senator Harrington of York</b>		
LR 2872		<b>FAILED</b>
	An Act to Allow Nurse Anesthetists to Practice Independently in Urban Settings	
<b>Representative Hasenfus of Readfield</b>		
LR 2644		<b>FAILED</b>
	An Act to Update the State of Mind Requirement for Certain Provisions of the Law Regarding the Crime of Gross Sexual Assault	
<b>Representative Hepler of Woolwich</b>		
LR 2792		<b>FAILED</b>
	An Act to Respond to the Emergent Epidemic of Co-occurring Brain Injury and Overdose and Substance Use Disorder	
LR 2830		<b>FAILED</b>
	An Act to Safely Remove Derelict and Abandoned Boats in the State	
<b>Senator Ingwersen of York</b>		
LR 2836		<b>PASSED</b>
	Resolve, to Establish a Working Group to Prioritize Mental Health and Wellness Resources Within Maine's Heritage Industries	

**132st Legislature - Second Regular Session**  
**Legislative Council Action on Legislative Bill Requests**  
**November 20, 2025**

---

	<b>Action</b>
<b>Representative Julia of Waterville</b>	
LR 2832	<b>WITHDRAWN</b>
An Act to Clarify Resale Ticket Fee Limitations	
<b>Representative Kessler of South Portland</b>	
LR 2865	<b>FAILED</b>
An Act to Amend the Laws Regarding Legislative Reimbursement for Security Purposes	
<b>Representative Kuhn of Falmouth</b>	
LR 2837	<b>FAILED</b>
An Act to Clarify the Laws Regarding Municipal Land Use	
<b>Representative Lemelin of Chelsea</b>	
LR 2640	<b>FAILED</b>
An Act to Provide Transparency and Accuracy at Transfer, Trash and Recycling Facilities	
<b>Senator Libby of Cumberland</b>	
LR 2625	<b>WITHDRAWN</b>
An Act to Protect Maine Residents from Deceptive Audio and Digital Depictions of Persons	
LR 2749	<b>FAILED</b>
An Act to Place a Moratorium on Dam Removals	
<b>Representative Libby of Auburn</b>	
LR 2878	<b>FAILED</b>
An Act Banning the Issuance of Digital Identification Documents by State or Local Governments	
<b>Representative Lookner of Portland</b>	
LR 2591	<b>FAILED</b>
An Act to Increase Accountability of Law Enforcement by Prohibiting the Use of Masks That Conceal the Identities of Law Enforcement Officers	
LR 2917	<b>FAILED</b>
An Act to Create a Tax on Net Investment Income	

**132st Legislature - Second Regular Session**  
**Legislative Council Action on Legislative Bill Requests**  
**November 20, 2025**

---

		Action
<b>Representative Macias of Topsham</b>		
LR 2924	Resolve, Directing State Agencies to Increase Awareness, Accountability and Preparedness Regarding Long COVID	<b>FAILED</b>
<b>Representative Malon, II of Biddeford</b>		
LR 2850	An Act to Update the Calculation of Retirement Benefits for State Employees	<b>FAILED</b>
<b>Senator Martin of Oxford</b>		
LR 2868	An Act to Provide Fair and Predictable Property Taxation for Landowners in the Unorganized Territory	<b>FAILED</b>
<b>Representative McCabe of Lewiston</b>		
LR 2857	An Act to Sustain Access to Children's Residential Care Services	<b>PASSED</b>
<b>Representative McIntyre of Lowell</b>		
LR 2752	An Act to Implement the Education Recommendations of the Maine Artificial Intelligence Task Force	<b>FAILED</b>
<b>Representative Montell of Gardiner</b>		
LR 2927	An Act to Require Radon Testing and Remediation of Newly Constructed Buildings	<b>FAILED</b>
LR 2928	An Act to Establish a Long-term Plan for the Remediation of Radon in the State House	<b>FAILED</b>
<b>Senator Moore of Washington</b>		
LR 2867	An Act Regarding the Finances of Washington County	<b>FAILED</b>
<b>Senator Nangle of Cumberland</b>		
LR 2938		<b>PASSED</b>

**132st Legislature - Second Regular Session**  
**Legislative Council Action on Legislative Bill Requests**  
**November 20, 2025**

---

		Action
<b>Senator Nangle of Cumberland</b>		
An Act to Modify Provisions of Law Governing Parking Enforcement on Lots Accessible to the Public		
<b>Representative Pluecker of Warren</b>		
LR 2941		<b>FAILED</b>
An Act Regarding the Qualified Small Business Stock Tax Exemption		
<b>Representative Poirier of Skowhegan</b>		
LR 2585		<b>FAILED</b>
An Act to Strengthen Maine's Extreme Risk Protection Order Process by Supporting Crisis Receiving Centers, Requiring School Resource Officer Education and Establishing the Yellow Flag Public Safety Fund		
<b>Senator Reny of Lincoln</b>		
LR 2736		<b>PASSED</b>
An Act to Improve Access to Affordable Medication in Underserved Areas		
LR 2902		<b>FAILED</b>
An Act to Ensure Affordable Health Care Coverage in the Absence of Federal Support		
<b>Representative Rielly of Westbrook</b>		
LR 2755		<b>WITHDRAWN</b>
An Act to Amend the Laws Governing the Citizen Trade Policy Commission		
<b>Representative Roberts of South Berwick</b>		
LR 2725		<b>FAILED</b>
An Act to Require Electronic Monitoring of an Excessive or Habitual Speeder's Motor Vehicle as a Condition of License Reinstatement		
LR 2739		<b>FAILED</b>
An Act to Amend the State's Paid Family and Medical Leave Benefits Program Regarding Eligibility Determinations, Employee Protections and Wage Deductions		
LR 2741		<b>FAILED</b>
An Act to Support Seasonal Businesses and Retain Foreign Workers in the State's Paid Family and Medical Leave Benefits Program		
LR 2879		<b>FAILED</b>



**132st Legislature - Second Regular Session**  
**Legislative Council Action on Legislative Bill Requests**  
**November 20, 2025**

---

		Action
<b>Representative Roberts of South Berwick</b>		
An Act to Make Certain Changes to the Subscription Cancellation Law		
<b>Representative Roeder of Bangor</b>		
LR 2866		<b>FAILED</b>
An Act to Require That Death Certificates of Individuals with No Fixed Address Indicate Domicile Unknown		
<b>Senator Rotundo of Androscoggin</b>		
LR 2905		<b>FAILED</b>
An Act to Create an Income Tax Credit for Eligible Local News Organizations		
<b>Representative Sayre of Kennebunk</b>		
LR 2778		<b>FAILED</b>
An Act to Adopt the Workforce Recommendations of the Maine Artificial Intelligence Task Force		
LR 2782		<b>FAILED</b>
An Act to Adopt the Economic Recommendations of the Maine Artificial Intelligence Task Force		
<b>Senator Stewart of Aroostook</b>		
LR 2666		<b>FAILED</b>
An Act to Prohibit a Person with an Expired Tourist Visa from Operating a Motor Vehicle in Maine		
LR 2669		<b>FAILED</b>
An Act to Prohibit the Imposition of a Fine on an Owner of Commercial Rental Property Who Is Unable to Rent that Property		
LR 2859		<b>FAILED</b>
An Act to Provide Property Tax Relief for Seniors		
LR 2919		<b>FAILED</b>
An Act Regarding Scholarship Granting Organizations		
<b>Representative Stover of Boothbay</b>		
LR 2843		<b>FAILED</b>

**132st Legislature - Second Regular Session**  
**Legislative Council Action on Legislative Bill Requests**  
**November 20, 2025**

---

		Action
<b>Representative Stover of Boothbay</b>		
Resolve, Directing the Department of Health and Human Services to Adopt and Publish Rules Regarding Rates for Home and Community-based Services Under the MaineCare Program		
LR 2844		<b>PASSED</b>
An Act to Increase Accountability of Those Engaged in Commercial Sexual Exploitation and Human Trafficking and to Support Victims		
<b>Representative Supica of Bangor</b>		
LR 2827		<b>FAILED</b>
An Act to Establish an Advisory Committee on Supporting People with Severe and Persistent Mental Health Concerns		
<b>Senator Talbot Ross of Cumberland</b>		
LR 2940		<b>FAILED</b>
An Act Requiring School Boards to Develop Policies to Ensure Educators' Free Speech Rights Are Protected		
<b>Senator Tepler of Sagadahoc</b>		
LR 2726		<b>FAILED</b>
An Act to Improve the Management of Wastewater Treatment Plant Sludge at the State-owned Juniper Ridge Landfill		
LR 2855		<b>FAILED</b>
An Act to Require the Department of Health and Human Services to Create a System of Penalties for Residential Facilities That Provide Care That Violate State Guidelines		
LR 2860		<b>FAILED</b>
Resolve, to Create a Study Commission to Improve the Health and Safety of Maine's People and Environment by Improving Communication Between Executive Branch Departments with Shared Responsibilities		
<b>Senator Tipping of Penobscot</b>		
LR 2886		<b>FAILED</b>
An Act to Reduce the Cost of Medications by Requiring Public Payors to Cap Drug Reimbursement Amounts		
<b>Representative Tuell of East Machias</b>		
LR 2586		<b>PASSED</b>

**132st Legislature - Second Regular Session**  
**Legislative Council Action on Legislative Bill Requests**  
**November 20, 2025**

---

		Action
<b>Representative Tuell of East Machias</b>		
An Act Designating July 21st as Remembrance Day for Those Who Fish Commercially in Maine		
LR 2643		<b>FAILED</b>
An Act to Require County Budgets to Be Approved by a Countywide Referendum		
<b>Representative White of Guilford</b>		
LR 2629		<b>PASSED</b>
An Act to Align the Law Governing Emergency Equipment for Trucks and Truck-tractors with the Federal Motor Carrier Safety Act		
Total number of bills accepted: 16		
Total number of bills tabled: 0		
Total number of bills screened: 81		

**132nd Maine State Legislature  
Second Regular Session**

**Legislative Council Actions Taken on Requests to  
Introduce Legislation and Joint Resolutions at  
Legislative Council Held on November 20, 2025**

**AFTER DEADLINE BILL REQUESTS**

**SPONSOR:** Rep. Ed Crockett

<u>LR #</u>	<u>Title</u>	<u>Action</u>
2947	An Act to Amend the Maine Equal Pay Law to Specify That It Applies to Equal Work	No action taken

**SPONSOR:** Rep. Bill Pluecker

<u>LR #</u>	<u>Title</u>	<u>Action</u>
2961	An Act to Address Vacancies on the Knox County Budget Committee	Passed

**SPONSOR:** Sen. Jeff Timberlake

<u>LR #</u>	<u>Title</u>	<u>Action</u>
2950	An Act to Conform Fully to the Changes Made to the United States Internal Revenue Code in 2025	Failed

**JOINT RESOLUTIONS**

**SPONSOR:** Rep. Kristi M. Mathieson

<u>LR #</u>	<u>Title</u>	<u>Action</u>
2738	JOINT RESOLUTION PROCLAIMING THAT THE STATE OF MAINE SUPPORTS ADMITTING WASHINGTON, D.C. INTO THE UNION AS A STATE OF THE UNITED STATES OF AMERICA	No action taken

**SPONSOR:** Rep. Laurie Osher

<u>LR #</u>	<u>Title</u>	<u>Action</u>
2598	JOINT RESOLUTION MEMORIALIZING THE PRESIDENT OF THE UNITED STATES AND THE UNITED STATES CONGRESS URGING THE PASSAGE OF AN ENABLING ACT LEADING TO THE ADMISSION OF WASHINGTON, D.C. INTO THE UNION AS A STATE OF THE UNITED STATES OF AMERICA	No action taken



# Fiscal Briefing

January 22, 2026

*Prepared by the Office of Fiscal & Program Review*

## 1. General Fund Revenue Update (see attached)

**Total General Fund Revenue - FY 2026 (\$'s in Millions)**

	Budget	Actual	Var.	% Var.	Prior Year	% Change
December	\$467.6	\$463.2	(\$4.4)	-0.9%	\$443.9	4.4%
FYTD	\$2,853.0	\$2,862.0	\$9.0	0.3%	\$2,824.9	1.3%

General Fund revenue was below budget by -\$4.4 million (-0.9%) for December but was above budget by \$9.0 million (0.3%) for the fiscal year to date. These variances reflect the inclusion of the December 2025 Revenue Forecasting Committee (RFC) forecast. General Fund revenue through December of 2025 (FY 2026) was 1.3% above General Fund revenue through December of 2024 (FY 2025).

Individual income tax revenue for December was -\$0.4 million below budget for the month and for the fiscal year to date. Individual income tax withholding payments and final and estimated payments were slightly above budget for the month and for the fiscal year to date, while individual income tax refunds were \$2.5 million greater than budgeted for December and \$3.3 million greater than budgeted for the fiscal year to date (negative impacts on the General Fund). Corporate income tax revenue was -\$10.0 million (-16.0%) below budget for December and -\$10.0 million (-5.6%) below budget for the fiscal year to date. Sales and use tax revenue for December (November sales) was \$1.8 million (1.0%) above budget for the month and \$1.8 million (0.1%) above budget for the fiscal year to date. Lottery Commission transfers to the General Fund were \$2.8 million above budget for December and \$7.2 million (18.4%) above budget for the fiscal year to date.

## 2. Highway Fund Revenue Update (see attached)

**Total Highway Fund Revenue - FY 2026 (\$'s in Millions)**

	Budget	Actual	Var.	% Var.	Prior Year	% Change
December	\$31.5	\$33.7	\$2.2	6.8%	\$39.2	-14.2%
FYTD	\$303.3	\$304.7	\$1.4	0.5%	\$331.7	-8.1%

Highway Fund revenue was above budget by \$2.2 million (6.8%) for December and \$1.4 million (0.5%) for the fiscal year to date. These variances reflect the inclusion of the December 2025 Revenue Forecasting Committee (RFC) forecast. Highway Fund revenue through December of 2025 (FY 2026) was -8.1% less than Highway Fund revenue through December of 2024 (FY 2025), primarily because of the decrease in the automotive sales tax transferred to the Highway Fund in July of 2025.

Fuel taxes revenue was \$0.6 million (3.4%) above budget for December and \$1.4 million (1.2%) above budget for the fiscal year to date. Motor vehicle registration and fees were above budget by \$1.6 million (21.6%) for December and above budget by \$4.9 million (8.7%) for the fiscal year to date. Highway Fund transfers from the liquor operations fund were -\$0.5 million less than budgeted for December and -\$1.4 million (-5.3%) below budget for the fiscal year to date.

## 3. Cash Balances Update

The average daily balance in the cash pool for December was \$3,463.8 million, a decrease of -\$68.8 million from November's average daily balance. Decreases in Other Special Revenue Funds and the Highway Fund were partially offset by increases in the General Fund and Other State Funds. The Highway Fund average daily balance for December was \$73.7 million, a decrease of -\$23.5 million from November's average daily balance, the result of the annual payment to the Local Road Assistance program being made in December.

#### **4. Economic and Revenue Forecast – Winter 2026 Meetings**

The Consensus Economic Forecasting Commission (CEFC) will next meet on January 28th to review and update the economic forecast for its required February 1st report. The Revenue Forecasting Committee (RFC) will meet during the last week of February to review and update the revenue forecast for its required March 1st report.

**General Fund Revenue**  
**Fiscal Year Ending June 30, 2026 (FY 2026)**

Updated 1/19/26

**December 2025 Revenue Variance Report**

Revenue Category				Fiscal Year-To-Date					FY 2026 Budgeted Totals
	December '25 Budget	December '25 Actual	December '25 Variance	Budget	Actual	Variance	Variance %	% Change from Prior Year	
Sales and Use Tax <sup>1</sup>	171,649,724	173,420,345	1,770,621	1,291,234,247	1,293,004,867	1,770,620	0.1%	2.6%	2,399,482,973
Service Provider Tax	2,989,717	3,249,250	259,533	22,845,069	23,104,602	259,533	1.1%	0.2%	26,058,860
Individual Income Tax	275,316,624	274,909,786	(406,838)	1,429,644,272	1,429,237,433	(406,839)	0.0%	1.6%	2,785,528,319
Corporate Income Tax	62,377,796	52,422,812	(9,954,984)	177,047,642	167,092,658	(9,954,984)	-5.6%	-19.3%	371,999,999
Cigarette and Tobacco Tax <sup>2</sup>	13,584,666	12,699,737	(884,929)	79,496,550	78,611,620	(884,930)	-1.1%	0.7%	183,934,931
Insurance Companies Tax	82,073	325,879	243,806	19,720,274	19,964,079	243,805	1.2%	-4.4%	133,611,000
Estate Tax	4,008,333	4,187,630	179,297	33,777,105	33,956,402	179,297	0.5%	53.0%	61,730,000
Other Taxes and Fees *	9,408,809	7,456,114	(1,952,695)	86,994,978	94,004,081	7,009,103	8.1%	13.6%	155,647,629
Fines, Forfeits and Penalties	1,345,550	1,097,193	(248,357)	10,162,320	9,429,503	(732,817)	-7.2%	207.2%	16,628,707
Income from Investments	3,662,066	3,769,567	107,501	21,710,363	21,818,716	108,353	0.5%	-32.0%	42,059,604
Transfer from Lottery Commission	6,000,000	8,774,648	2,774,648	39,000,000	46,161,186	7,161,186	18.4%	20.2%	78,000,000
Transfer from Liquor Commission	0	0	0	7,000,000	7,000,000	0	0.0%	0.0%	7,000,000
Transfers to Tax Relief Programs *	(63,943,831)	(62,682,245)	1,261,586	(67,376,249)	(66,114,664)	1,261,585	1.9%	7.6%	(82,994,000)
Transfers for Municipal Revenue Sharing	(19,101,080)	(19,099,244)	1,836	(148,093,742)	(148,091,907)	1,835	0.0%	0.1%	(283,367,645)
Highway Fund Sales Tax Transfer	0	0	0	(118,509,077)	(118,509,077)	(0)	0.0%	-2.3%	(118,506,620)
Other Revenue *	246,163	2,653,663	2,407,500	(31,634,338)	(28,699,520)	2,934,818	9.3%	-36.5%	(760,910)
<b>Totals</b>	<b>467,626,610</b>	<b>463,185,134</b>	<b>(4,441,476)</b>	<b>2,853,019,414</b>	<b>2,861,969,978</b>	<b>8,950,564</b>	<b>0.3%</b>	<b>1.3%</b>	<b>5,776,052,847</b>

\* Additional detail by subcategory for these categories is presented on the following page.

1 / Includes revenue from adult-use cannabis sales taxes of \$2.0 million for December and \$13.0 million for the fiscal year to date.

2 / Includes revenue from adult-use cannabis excise taxes of \$1.5 million for December and \$9.6 million for the fiscal year to date.



**General Fund Revenue**  
**Fiscal Year Ending June 30, 2026 (FY 2026)**

Updated 1/19/26

**December 2025 Revenue Variance Report**

Revenue Category				Fiscal Year-To-Date					FY 2026 Budgeted Totals
	December '25 Budget	December '25 Actual	December '25 Variance	Budget	Actual	Variance	Variance %	% Change from Prior Year	
<b>Detail of Other Taxes and Fees:</b>									
- Property Tax - Unorganized Territory	0	0	0	12,591,207	18,032,711	5,441,504	43.2%	22.8%	14,883,223
- Real Estate Transfer Tax	2,062,475	1,313,693	(748,782)	17,401,420	16,652,639	(748,781)	-4.3%	28.1%	21,901,440
- Liquor Taxes and Fees	2,130,863	1,224,595	(906,268)	11,193,883	11,016,438	(177,445)	-1.6%	3.0%	22,093,824
- Corporation Fees and Licenses	344,573	321,057	(23,516)	4,483,779	4,676,935	193,156	4.3%	-4.3%	12,643,649
- Telecommunication Excise Tax	0	0	0	8,853,059	8,853,059	(0)	0.0%	44.3%	8,050,000
- Finance Industry Fees	1,507,983	1,904,800	396,817	11,026,198	11,461,000	434,802	3.9%	-3.2%	25,105,000
- Milk Handling Fee	49,934	110,484	60,550	383,324	443,872	60,548	15.8%	-0.2%	833,809
- Racino Revenue	981,539	1,052,645	71,106	5,889,234	6,386,956	497,722	8.5%	4.0%	11,544,318
- Boat, ATV and Snowmobile Fees	203,860	166,837	(37,023)	1,636,422	1,503,867	(132,555)	-8.1%	16.2%	4,559,561
- Hunting and Fishing License Fees	1,092,454	776,709	(315,745)	8,044,540	9,366,800	1,322,260	16.4%	31.2%	17,473,984
- Other Miscellaneous Taxes and Fees	1,035,128	585,295	(449,833)	5,491,912	5,609,805	117,893	2.1%	-13.2%	16,558,821
<b>Subtotal - Other Taxes and Fees</b>	<b>9,408,809</b>	<b>7,456,114</b>	<b>(1,952,695)</b>	<b>86,994,978</b>	<b>94,004,081</b>	<b>7,009,103</b>	<b>8.1%</b>	<b>13.6%</b>	<b>155,647,629</b>
<b>Detail of Other Revenue:</b>									
- Targeted Case Management (DHHS)	0	0	0	0	0	0	N/A	N/A	0
- State Cost Allocation Program	2,203,057	2,849,938	646,881	18,074,269	17,532,956	(541,313)	-3.0%	37.1%	31,292,728
- Unclaimed Property Transfer	0	0	0	0	0	0	N/A	N/A	12,000,000
- Tourism Transfer	0	0	0	(26,708,516)	(25,883,210)	825,306	3.1%	-6.7%	(26,706,297)
- Transfer to Maine Milk Pool	(1,185,019)	(2,161,381)	(976,362)	(12,788,600)	(9,898,125)	2,890,475	22.6%	-364.5%	(19,898,773)
- Transfer to Multimodal Transportation Fund	0	0	0	(18,117,877)	(18,117,877)	0	0.0%	-9.4%	(18,117,877)
- Transfer to Adult-Use Cannabis Fund	617,797	527,034	(90,763)	(1,685,218)	(1,775,981)	(90,763)	-5.4%	33.4%	(2,451,421)
- Other Miscellaneous Revenue	(1,389,672)	1,438,072	2,827,744	9,591,604	9,442,717	(148,887)	-1.6%	-20.0%	23,120,730
<b>Subtotal - Other Revenue</b>	<b>246,163</b>	<b>2,653,663</b>	<b>2,407,500</b>	<b>(31,634,338)</b>	<b>(28,699,520)</b>	<b>2,934,818</b>	<b>9.3%</b>	<b>-36.5%</b>	<b>(760,910)</b>
<b>Detail of Transfers to Tax Relief Programs:</b>									
- Me. Resident Prop. Tax Program (Circuitbreaker)	0	0	0	0	0	0	N/A	N/A	0
- BETR - Business Equipment Tax Reimb.	(2,081,766)	(1,232,048)	849,718	(5,220,448)	(4,370,730)	849,718	16.3%	26.8%	(16,846,000)
- BETE - Municipal Bus. Equip. Tax Reimb.	(61,862,065)	(61,450,197)	411,868	(62,155,801)	(61,743,934)	411,867	0.7%	5.8%	(66,148,000)
<b>Subtotal - Tax Relief Transfers</b>	<b>(63,943,831)</b>	<b>(62,682,245)</b>	<b>1,261,586</b>	<b>(67,376,249)</b>	<b>(66,114,664)</b>	<b>1,261,585</b>	<b>1.9%</b>	<b>7.6%</b>	<b>(82,994,000)</b>
<b>Inland Fisheries and Wildlife Revenue - Total</b>	<b>1,362,681</b>	<b>1,033,678</b>	<b>(329,003)</b>	<b>10,112,419</b>	<b>11,283,951</b>	<b>1,171,532</b>	<b>11.6%</b>	<b>27.3%</b>	<b>22,987,091</b>

# Highway Fund Revenue

## Fiscal Year Ending June 30, 2026 (FY 2026)

Updated 1/19/26

### December 2025 Revenue Variance Report

Revenue Category	December '25 Budget	December '25 Actual	December '25 Variance	Fiscal Year-To-Date					FY 2026 Budgeted Totals
				Budget	Actual	Variance	Variance %	% Change from Prior Year	
Fuel Taxes:									
- Gasoline Tax	16,048,343	15,422,857	(625,486)	106,881,238	106,255,624	(625,614)	-0.6%	-0.9%	200,743,355
- Special Fuel and Road Use Taxes	3,890,535	5,141,817	1,251,282	25,625,073	27,725,743	2,100,670	8.2%	2.6%	48,589,107
- Transcap Transfers - Fuel Taxes	(2,039,550)	(2,100,052)	(60,502)	(13,461,280)	(13,521,780)	(60,500)	-0.4%	-0.4%	(24,957,852)
- Other Fund Gasoline Tax Distributions	(466,971)	(448,791)	18,180	(3,110,058)	(3,091,876)	18,182	0.6%	-1.3%	(5,841,230)
Subtotal - Fuel Taxes	17,432,357	18,015,831	583,474	115,934,973	117,367,711	1,432,738	1.2%	-0.3%	218,533,380
Motor Vehicle Registration and Fees:									
- Motor Vehicle Registration Fees	4,530,121	5,640,000	1,109,879	35,516,043	38,748,840	3,232,797	9.1%	6.2%	71,419,954
- License Plate Fees	319,963	482,109	162,146	2,340,832	2,982,150	641,318	27.4%	-13.7%	4,032,907
- Long-term Trailer Registration Fees	1,061,897	1,119,086	57,189	5,846,787	5,866,271	19,484	0.3%	-13.8%	15,034,523
- Title Fees	1,061,945	1,094,047	32,102	7,102,850	7,501,973	399,123	5.6%	2.4%	14,214,949
- Motor Vehicle Operator License Fees	647,641	933,670	286,029	5,788,802	6,431,172	642,370	11.1%	12.7%	10,983,098
- Transcap Transfers - Motor Vehicle Fees	0	0	0	0	0	0	N/A	100.0%	0
Subtotal - Motor Vehicle Reg. & Fees	7,621,567	9,268,911	1,647,344	56,595,314	61,530,405	4,935,091	8.7%	20.1%	115,685,431
Motor Vehicle Inspection Fees	266,874	(1,040)	(267,914)	1,601,244	1,622,664	21,420	1.3%	21.3%	3,202,500
Other Highway Fund Taxes and Fees	46,130	105,572	59,442	324,654	857,213	532,559	164.0%	-8.4%	1,418,970
Fines, Forfeits and Penalties	40,792	74,177	33,385	241,319	526,519	285,200	118.2%	0.4%	606,412
Interest Earnings	369,398	326,872	(42,526)	1,911,328	1,868,803	(42,525)	-2.2%	-8.5%	3,303,683
Highway Fund Sales Tax Transfer	0	0	0	92,437,080	92,446,088	9,008	0.0%	-20.2%	92,437,080
Liquor Operations Fund Transfer	5,500,000	4,979,814	(520,186)	26,000,000	24,614,664	(1,385,336)	-5.3%	-20.2%	59,000,000
Other Highway Fund Revenue	240,785	900,960	660,175	8,301,003	3,901,768	(4,399,235)	-53.0%	-65.2%	12,278,879
<b>Totals</b>	<b>31,517,903</b>	<b>33,671,098</b>	<b>2,153,195</b>	<b>303,346,915</b>	<b>304,735,835</b>	<b>1,388,920</b>	<b>0.5%</b>	<b>-8.1%</b>	<b>506,466,335</b>

**132<sup>nd</sup> Maine Legislature**  
**Legislative Council Authorized Studies and Interim Meetings of Joint Standing Committees – 2025**  
**January 22, 2026**

Study Commission/Committee Study	Assigned Staff	Number of authorized meetings held to date	Report Date	Chairs	Status or comment
<b>Interim Studies, Nonpartisan Staff-assigned</b>					
<b>LD 353</b> <b>Resolve, to Establish the Commission to Recommend Methods for Preventing Deed Fraud in the State</b> <a href="#"><u>Resolve 2025, c. 104</u></a>	Janet Stocco Will Tew Melanie Furman	<i>Monday, September 29, 2025 10:00 a.m.</i> <i>Monday, October 20, 2025 10:00 a.m.</i> <i>Wednesday, November 5, 2025 10:00 a.m.</i> <i>Wednesday, December 3, 2025 10:00 a.m.</i>	12/3/2025	Sen. Henry Ingwersen  Rep. Adam Lee	Final report complete and presented to JUD
<b>LD 1578</b> <b>Resolve, to Establish the Commission to Evaluate the Scope of Regulatory Review and Oversight over Health Care Transactions That Impact the Delivery of Health Care Services in the State</b> <a href="#"><u>Resolve 2025, c. 106</u></a>	Colleen McCarthy Reid Karen Nadeau Steve Langlin	<i>Wednesday, October 8, 2025 10:00 a.m.</i> <i>Wednesday, October 22, 2025 10:00 a.m.</i> <i>Wednesday, November 5, 2025 10:00 a.m.</i> <i>Monday, November 17, 2025 10:00 a.m.</i> <i>Monday, December 8, 2025 10:00 a.m.</i>	12/10/2025	Sen. Mike Tipping  Rep. Michelle Boyer	Request approved for one additional meeting  Final report complete and presented to HCIFS
<b>LD 1615</b> <b>Resolve, to Expand Access to Oral Health Care by Studying Alternative Pathways for Obtaining a License to Practice Dentistry</b> <a href="#"><u>Resolve 2025, c. 107</u></a>	Anna Broome Anne Davison Sophia Paddon	<i>Wednesday, October 8, 2025 10:00 a.m.</i> <i>Wednesday October 22, 2025 10:00 a.m.</i> <i>Wednesday, November 5, 2025 10:00 a.m.</i>	12/10/2025	Sen. Donna Bailey  Rep. Ambureen Rana	Commission held 3 meetings total  Final report complete and presented to HCIFS
<b>LD 1770</b> <b>Resolve, to Establish the Real Estate Property Tax Relief Task Force</b> <a href="#"><u>Resolve 2025, c. 108</u></a>	Lindsay Laxon Rachel Olson James Sargent (OFPR)	<i>Friday, September 12, 2025 10:00 a.m.</i> <i>Tuesday, September 30, 2025 10:00 a.m.</i> <i>Friday, October 24, 2025 10:00 a.m.</i> <i>Thursday, November 13, 2025 10:00 a.m.</i> <i>Thursday, December 4, 2025 10:00 a.m.</i> <i>Tuesday, December 16, 2025 10:00 a.m.</i>	Interim Report 1/15/2026 Final Report 12/15/2026	Sen. Nicole Grohoski  Rep. Ann Matlack	8 meetings authorized during 2-year study period  Contractor for research and analysis selected

**132<sup>nd</sup> Maine Legislature**  
**Legislative Council Authorized Studies and Interim Meetings of Joint Standing Committees – 2025**  
**January 22, 2026**

Study Commission/Committee Study	Assigned Staff	Number of authorized meetings <i>held</i> to date	Report Date	Chairs	Status or comment
		<b>IFP subcommittee</b> <i>Friday, October 17, 2025 @ 3:30 p.m.</i> <i>Friday, October 24, 2025 @ 2:00 p.m.</i>			Interim report drafted pending internal review
<b>LD 1270</b> <b>An Act to Establish the Department of Energy Resources</b> <a href="#">P.L. c. 476</a>	Lindsay Laxon Ed Charbonneau Kristin Bishop Dan Tartakoff		N/A	N/A	Drafting assistance only - complete
<b>Right to Know Advisory Committee</b> <a href="#">T 1 §411</a>	Sam Senft Elena Roig Melanie Furman Kristin Bishop	<b><u>Full RTKAC meetings</u></b> <i>Friday, September 26, 2025 10:00 a.m.</i> <i>Wednesday, October 15, 2025 1:00 p.m.</i> <i>Wednesday, October 29, 2025 1:00 p.m.</i> <i>Wednesday, November 19, 2025 1:00 p.m.</i> <b><u>Technology subcommittee</u></b> <i>Tuesday, October 14, 2025 12:00 p.m.</i> <i>Monday, October 27, 2025 12:00 p.m.</i> <i>Monday, November 10, 2025 12:00 p.m.</i> <b><u>Records exceptions subcommittee</u></b> <i>Wednesday, October 15, 2025 10:00 a.m.</i> <i>Wednesday, November 5, 2025 1:00 p.m.</i> <i>Thursday, November 13, 2025 11:00 a.m.</i> <b><u>Burdensome requests subcommittee</u></b> <i>Friday, October 17, 2025 10:00 a.m.</i> <i>Monday, October 27, 2025 10:00 a.m.</i> <i>Wednesday, November 5, 2025 10:00 a.m.</i> <b><u>Public employees subcommittee</u></b> <i>Wednesday, October 22, 2025 10:00 a.m.</i> <i>Thursday, November 6, 2025 10:00 a.m.</i> <i>Monday, November 17, 2025 10:00 a.m.</i>	Annually January	Sen. Anne Carney	Report draft complete – pending final review and printing

## Interim Meetings of Joint Standing Committees and Subcommittees

Agriculture, Conservation & Forestry	Karen Nadeau		
Appropriations and Financial Affairs	Maureen Dawson	<i>Friday, October 17, 2025</i> <i>Monday, December 15, 2025</i>	Joint meeting with TAX and HHS (briefings)  Work session
Criminal Justice and Public Safety	William Tew	<i>Tuesday, January 6, 2026</i>	Briefing and public hearing
Education and Cultural Affairs	Elena Roig Steve Langlin		
Environment and Natural Resources	Daniel Tartakoff	<i>Wednesday, October 15, 2025</i>	Off-site tour
Energy, Utilities and Technology	Lindsay Laxon	<i>Thursday, September 18, 2025</i> <i>Thursday, October 30, 2025</i> <i>Tuesday, January 6, 2026</i>	Work sessions, public hearing
Health and Human Services	Anna Broome Sam Senft	<i>Tuesday, September 9, 2025</i> <i>Tuesday, January 6, 2026</i>	Quarterly DHHS update pursuant to statute (child protection matters)  Public hearing
Health Coverage, Insurance and Financial Services	Colleen McCarthy Reid	<i>Wednesday, October 1, 2025</i> <i>Thursday, November 6, 2025</i>	Briefings and work sessions (confirmation hearings)
Housing and Economic Development	Lynne Westphal Sophia Paddon	<i>Wednesday, October 22, 2025</i> <i>Wednesday, December 10, 2025</i> <i>Tuesday, January 6, 2026</i>	Briefings and work sessions
Inland Fisheries and Wildlife	Anne Davison		
Judiciary	Janet Stocco Elias Murphy	<i>Wednesday, November 12, 2025</i> <i>Thursday, November 13, 2025</i> <i>Friday, November 14, 2025</i> <i>Tuesday, January 6, 2026</i>	Briefings and public hearing, work session (confirmation hearings)
Labor	Steven Langlin Sophia Paddon		
Marine Resources	Anne Davison		
State and Local Government	Kristin Bishop		

Taxation	Dan Tartakoff Danielle Fox (temporary staffing assignment)	<i>Friday, October 17, 2025</i>	Joint meeting with AFA and work sessions
Transportation	Melanie Furman		
Veteran and Legal Affairs	Rachel Olson Karen Nadeau	<del><i>Monday, October 20, 2025 9:30 a.m.</i></del>	Meeting canceled

**Legislative Council Actions**  
**Taken by Ballot Since the**  
**November 20, 2025 Council Meeting**

**Legislative Council Decisions:**

**Motion:**        **That the Legislative Council Authorize the Commission to Evaluate the Scope of Regulatory Review and Oversight over Health Care Transactions that Impact the Delivery of Health Care Services in the State to hold one additional commission meeting prior to December 10, 2025**

Motion by:      Speaker Ryan D. Fecteau  
Date:             November 24, 2025  
Vote:             6-0-0-4 Passed (with Senator Stewart, Senator Harrington, Representative Faulkingham, and Representative Smith recorded as absent)

**Motion:**        **That the Legislative Council Approve the Maine National Speech and Debate Association's request to hold the Maine High School Debate Tournament in legislative space in the State House Complex on Saturday, January 17, 2026**

Motion by:      Speaker Ryan D. Fecteau  
Date:             December 19, 2025  
Vote:             7-0-0-3 Passed (with Senator Harrington, Representative Faulkingham, and Representative Gramlich recorded as absent)

**Requests for Introduction of Legislation:**

**LR 2971        An Act to Require All Public School Buses to Be Equipped with School Bus Crossing Arms**

Submitted by:   Representative Valli Geiger  
Date:             December 12, 2025  
Vote:             6-0-0-4 Passed (with Senator Duson, Senator Stewart, Senator Harrington, and Representative Faulkingham recorded as absent)

**LR 2965        Resolve, to Rename a Bridge in Roxbury the Roxbury-Frye Veterans Memorial Bridge**

Submitted by:   Senator Joseph Martin  
Date:             January 7, 2026  
Vote:             7-0-0-3 Passed (with Senator Duson, Representative Smith, and Representative Faulkingham recorded as absent)

**132nd Maine State Legislature  
Request to Introduce Legislation  
And Certain Joint Resolutions  
Second Regular Session**

As of: 1/20/2026 12:53:23 PM

**AFTER DEADLINE BILL REQUESTS**

**SPONSOR: Sen. Donna Bailey**

<u>LR #</u>	<u>Title</u>	<u>Action</u>
2972	An Act Regarding Step Therapy for Alzheimer's Disease and Related Dementias	

**SPONSOR: Sen. Anne Beebe-Center**

<u>LR #</u>	<u>Title</u>	<u>Action</u>
2992	An Act to Allow a Surviving Spouse Who Holds an Elver License to Receive the Deceased Spouse's Elver Quota	

**SPONSOR: Sen. Dick Bradstreet**

<u>LR #</u>	<u>Title</u>	<u>Action</u>
2969	An Act to Prevent State Income Tax from Being Collected on Money Stolen from Victims of Government Impostor Scams	

**SPONSOR: Rep. Amanda N. Collamore**

<u>LR #</u>	<u>Title</u>	<u>Action</u>
2962	An Act Clarifying the Definition of "Domestic Partner"	

**SPONSOR: Rep. Ed Crockett**

<u>LR #</u>	<u>Title</u>	<u>Action</u>
2947	An Act to Amend the Maine Equal Pay Law to Specify That It Applies to Equal Work	

**SPONSOR: Sen. Scott Wynn Cyrway**

<u>LR #</u>	<u>Title</u>	<u>Action</u>
2967	An Act to Allow Transfer-on-death Designations for Motor Vehicles and Other Titled Property	



2993                      Resolve, to Study Opportunities to Improve Laws Related to the Rights of Individuals with Significant Intellectual Disabilities or Autism Spectrum Disorder

**SPONSOR:**                      **Rep. Billy Bob Faulkingham**

<u>LR #</u>	<u>Title</u>	<u>Action</u>
3010	An Act to Require the Secretary of State, When Requested, to Keep Confidential Motor Vehicle Registrations Issued to Law Enforcement Agencies	

**SPONSOR:**                      **Sen. Craig V. Hickman**

<u>LR #</u>	<u>Title</u>	<u>Action</u>
2978	An Act to Allow Schools to Expel Students for Committing Sexual Assault	

**SPONSOR:**                      **Sen. James D. Libby**

<u>LR #</u>	<u>Title</u>	<u>Action</u>
3005	Resolve, to Rename the Little River Bridge in the Town of Cornish the Cornish Veterans Memorial Bridge	

3006                      Resolve, Directing the Department of Transportation to Place Signs on Warren's Bridge Between the Town of Hiram and the Town of Cornish

3007                      Resolve, Directing the Department of Transportation to Place Signs on the East Limington Bridge Between the Town of Limington and the Town of Standish

3008                      Resolve, Directing the Department of Transportation to Place Signs on the Canal Bridge in the Town of Standish

**SPONSOR:**                      **Rep. Anne-Marie Mastraccio**

<u>LR #</u>	<u>Title</u>	<u>Action</u>
2994	An Act to Define "Grave Disability" in Regard to Mental Health Services	

**SPONSOR:**                      **Rep. Kristi M. Mathieson**

<u>LR #</u>	<u>Title</u>	<u>Action</u>
3004	Resolve, to Confirm and Finalize the Boundary Between the Town of Kittery and the Town of York	

**SPONSOR:**        **Rep. Mathew David McIntyre**

<u>LR #</u>	<u>Title</u>	<u>Action</u>
2963	An Act Implementing the Education Recommendations of the Maine Artificial Intelligence Task Force	

**SPONSOR:**        **Rep. Robert W. Nutting**

<u>LR #</u>	<u>Title</u>	<u>Action</u>
2976	An Act to Allow Vehicles Leased by Certain Veterans to Qualify for Excise Tax and Registration Fee Exemptions	

**SPONSOR:**        **Sen. Trey Stewart**

<u>LR #</u>	<u>Title</u>	<u>Action</u>
2964	An Act to Provide a Tax Credit for New Attorneys Practicing Civil and Criminal Law in Underserved Areas	

#### **JOINT RESOLUTIONS**

**SPONSOR:**        **Rep. Kristi M. Mathieson**

<u>LR #</u>	<u>Title</u>	<u>Action</u>
2738	JOINT RESOLUTION PROCLAIMING THAT THE STATE OF MAINE SUPPORTS ADMITTING WASHINGTON, D.C. INTO THE UNION AS A STATE OF THE UNITED STATES OF AMERICA	

**SPONSOR:**        **Rep. Laurie Osher**

<u>LR #</u>	<u>Title</u>	<u>Action</u>
2598	JOINT RESOLUTION MEMORIALIZING THE PRESIDENT OF THE UNITED STATES AND THE UNITED STATES CONGRESS URGING THE PASSAGE OF AN ENABLING ACT LEADING TO THE ADMISSION OF WASHINGTON, D.C. INTO THE UNION AS A STATE OF THE UNITED STATES OF AMERICA	

# Harriman

Partial  
Report

**State of Maine**  
**State House, HVAC Study**  
**BGS #3808**  
*Augusta, Maine*  
Harriman Project 24305

December 16, 2025

Study Report

AUBURN

BOSTON

PORTLAND

PORTSMOUTH

[www.harriman.com](http://www.harriman.com)



## TABLE OF CONTENTS

<b>1</b>	<b>Mechanical Study</b> <ul style="list-style-type: none"><li>▪ Study Intent</li><li>▪ Radon Mitigation</li><li>▪ Existing Conditions</li><li>▪ Radon Testing and Reports</li><li>▪ Testing and Balancing Report</li><li>▪ Other TAB Findings</li><li>▪ Radon Recommendations</li><li>▪ General Recommendations</li><li>▪ Construction Cost Estimation</li><li>▪ Conclusions</li></ul>
<b>2</b>	<b>Radon Mitigation Table</b>
<b>3</b>	<b>Drawings</b>
<b>4</b>	<b>TAB Report</b>
<b>5</b>	<b>Cost Estimate Report</b>
<b>6</b>	<b>Resources</b> <ul style="list-style-type: none"><li>▪ EPA/625/R-92/016 – <i>Radon Prevention in the Design and Construction of Schools and Other Large Buildings</i></li><li>▪ <i>Designing Commercial Sub-Slab Depressurization Systems</i></li></ul>
<b>7</b>	<b>Radon Testing</b> <ul style="list-style-type: none"><li>▪ Report March 2024</li><li>▪ Map March 2024</li><li>▪ Report August 2024 (Post ERV)</li><li>▪ Results Chart</li></ul>

## State of Maine, State House, HVAC Study

### HVAC Study



*State House*

#### ***Study Intent***

The State of Maine hired Harriman to conduct a study of the existing HVAC systems. This is in response to radon testing from March of 2024 that reported elevated levels on the first floor. This study will highlight the current Radon levels, commercial radon mitigation best practices, current operation of HVAC equipment and recommendations for permanent solutions to the high radon levels on the first floor. Other general recommendations for the HVAC systems are based on the study findings and airflow testing.

#### ***Radon Mitigation***

Radon is a naturally occurring radioactive gas that is a biproduct of radium-226 decay. Radon is the second leading cause of lung cancer in the U.S. behind smoking. The EPA limit is 4 pCi/L and is now recommending 2 pCi/L. These metrics were developed during the 1990s when there was a large push for research on the cause and effects of substantial amounts of radon found in buildings and homes. The EPA guidelines for large commercial buildings and school were used as a source for information and guidance for this study, one of the EPA white papers is attached. Today, it is typical that all commercial buildings have radon mitigation systems designed during the original construction due to the low initial cost during construction. Mitigation in existing building is a much larger task and can be expensive.

There are three methods of radon mitigation that can be used separately but are best when they are all combined.

#### ***Active Soil Depressurization (ASD)-***

The most effective and common way that radon is mitigated from homes and commercial buildings is Active Soil Depressurization (ASD). ASD is the process of evacuating air from beneath the slab of a building. This allows for the radon gas to be displaced above the roof of the building. This evacuation causes the pressure of the air below the slab to be negative and reduces the transfer of radon gas into the building.



## **State of Maine, State House, HVAC Study**

In new construction this system involves proper aggregates below slab, a scution pit, a small fan, and under slab PVC piping. An ASD suction pit can cover approximately 100,000 SQ. FT depending on communication of the below slab areas. The most common occurrence that causes more pits is intermediate foundation walls. The more there are foundation walls will cause the different under slabs areas to be divided. This results in the need for a pit per area. Depending on the age of the building, will determine if the below slab aggregates allow for large areas to be depressurized by one pit or multiple. There have been several studies on testing methods to determine if depressurization is possible in existing buildings.

Harriman's expertise is not in the means and methods of this depressurization testing, and it is unknown if these testing methods are still in practice but there are white papers describing them. One method is shown in the attached second white paper. Where a test core is taken in various locations of a building, this large core (3/4" to 1-1/2") is taken from a potential location of a suction fan. A vacuum is used to pull pressure from this core to simulate a suction fan. Next smaller test holes (3/8") are drilled in different areas radially outwards and pressure gauges are used to measure the under-slab pressure. Test hole and cores are drilled until there is sufficient negative pressure shown at each area of the building. This allows for an understanding of how the under-slab areas communicate. Additional information about this testing method and a case study on a building like the State House is attached.

While ASD is the most common method of radon mitigation it is also the most invasive in this situation. The additional work that would need to be done in an existing building would result in major construction and disruption of spaces. Suction fans would need to be discharged above the building per code, and this also results in PVC piping to be run throughout all the floors of the building. Buildings of this age of the State House there would likely be significant abatement cost in this work. Depending on the under slab communication the construction scope and cost would scale drastically if more suction points were needed.

### *Building Pressurization and Dilution-*

It is typical for the design of a HVAC system in a commercial building to ensure the building is slightly pressurized. This allows for less infiltration from the air outside of the building, boosting overall building efficiency. This is done by bringing in more outside air than the air that is exhausted. The outside air levels that is brought in is designated by ASHRAE 62 which is a standard that provides calculations for minimum outside/ventilation air for each type of occupancy. This along with ASD are the two best standards of practice that contribute to radon mitigation in buildings by pressurizing the building and diluting the radon in the air.

However, HVAC systems have more variables that decrease their radon mitigation capabilities. This is due to their main purpose is not being radon mitigation but occupant comfort. Examples of these variables are poor HVAC maintenance, scheduled turn down/turn off, reduced airflow during heating season and other openings in the building compromising pressurization. Most of these variables are either temporary or unavoidable. Proper maintenance of the HVAC system will allow the building to see design flows and proper pressures. Controlling the building with radon in mind there are several ways to schedule the start-up of ventilation unit(s) before the building is occupied to dilute the radon. The other temporary variables that will not affect the system in the short term but can cause the building to become negative and mine radon from below slab if left unattended.

## **State of Maine, State House, HVAC Study**

### ***Sealing Radon Entry Routes-***

Radon enters the building from below slab, one solution is to reduce the amount of radon entering the building is reducing the number of areas that have an easy path for air to communicate from below slab to the occupied areas. This method alone is the least effective but will increase the effectiveness of the prior two methods. This method also is the most invasive of occupied existing buildings. Sealing entry routes involve a significant amount of manual labor to remove existing floor finishes. Workers would need to find and seal any crack that could potentially communicate with the below slab air. This is much easier on new buildings since they can check the new slab before flooring and other finishes are installed. The current code also calls for vapor barrier between the slab and aggregates. This reduces the leak points drastically.

These three methods work best when all are applied to a building. The feasibility of them all being possible and economical on an existing building depends on the building. These three methods could be applied to the state house but in the attached table shows the pros, cons, and cost comparison of each method.

### ***Existing Conditions***

The existing HVAC system at the State House was installed between 1999 and 2001. This design was done by SMRT and all drawings (PDF & DWG) have been provided to the State of Maine during the study. All units are in reasonable shape for their age. However, during the study it was found lack of maintenance has lowered their efficiency and impacted design airflows. These units are approaching the end of their expected life spans and should be considered for replacement within the next several years.

There are three air handlers located at the top of the building. Two units are located in penthouses on the north and south wings. These units are mixed air units that serve the House Chamber and Senate Chamber. The last unit is in the attic of the west wing that is a 100% outside air unit serving all other rooms in the building.

There are no obvious apparent design issues with the original design of the systems. The visible ductwork system appears to be in good condition. However, the design utilized the existing chimneys to deliver air to each floor. This is most likely to reduce the abatement and demolition during the 1999 design. Since they use existing chimneys to deliver air to the lower floors there is a considerable probability that they are leaking most of the air and preventing the ventilation air from reaching the occupied spaces.

### ***AHU-1***

Air Handler Unit 1 conditions the larger of the two chambers. Located in the North Penthouse, AHU-1 provides ventilation, heating, and cooling to the House Chambers. This unit is in fair condition.

## State of Maine, State House, HVAC Study



*AHU-1 – North Penthouse*

This air handler has a return/relief fan that is separate from the AHU. There are also louvers for the intake and exhaust air on two sides of the penthouse.



*RF-1 – North Penthouse*

The supply duct is run in a doghouse like in the AHU-2 photos. This ductwork is then distributed in the North shallow dome and supplied into plenum boxes around the lights on the ceiling.



## State of Maine, State House, HVAC Study



*AHU-1 Supply Duct Distribution – North Shallow Dome*

Overall, AHU-1 system is in good condition. There are some findings that will be discussed in the TAB findings section that will need to be addressed.

### *AHU-2*

Air Handler Unit 2 is in the south penthouse and is the smallest of the three air handlers. AHU-2 is a mixing unit that is designed to supply ventilation, heating, and cooling to the Senate Chamber. Other offices and meeting rooms around the senate chambers are ventilated by AHU-3.



*AHU-2 and RF-2 – South Penthouse*

## State of Maine, State House, HVAC Study

The ductwork supply for this system is in an insulated exterior doghouse. This doghouse also houses some piping. The return ductwork is run in the attic space below the roof.



*Ductwork doghouse*

The supply duct is run in a doghouse to the shallow dome. This ductwork is then distributed in the shallow dome and supplied into plenum boxes around the lights on the ceiling.



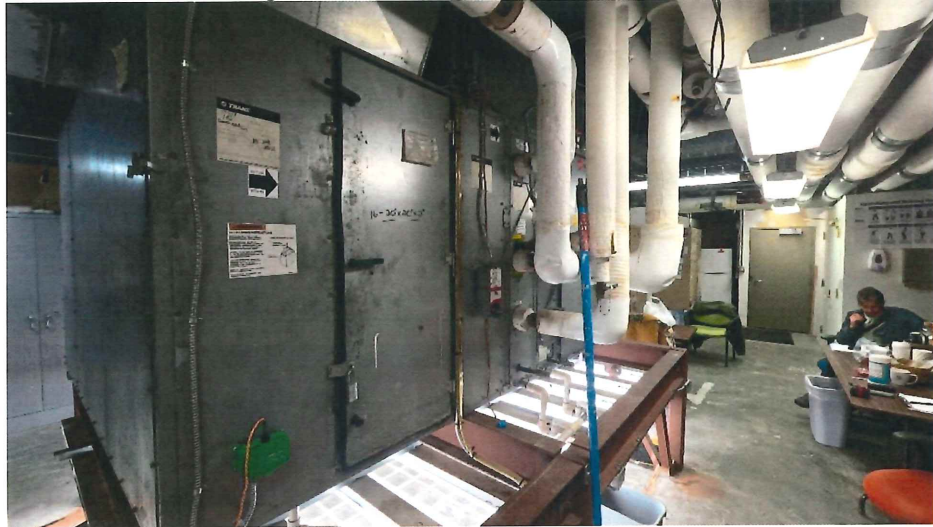
*Supply Ductwork distribution – South Shallow Dome*

Overall, AHU-2 system is in good condition. There are some findings that will be discussed in the TAB findings section that will need to be addressed.

## State of Maine, State House, HVAC Study

### AHU-3

Air Handler Unit 3 is the most critical to this study. This is because this unit provides ventilation air for almost every room within the building besides the chambers. The ventilation air is cooled and heated to be a room neutral temperature. AHU-3 serves the first floor where the radon testing contained elevated levels.



*AHU-3 – West Wing Attic*

Since this unit is 100% outside air. The return/relief fan exhausts all the air outside of the building.





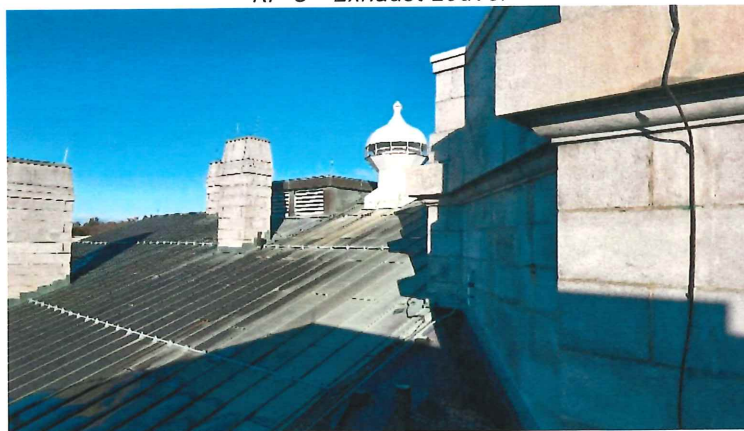
## State of Maine, State House, HVAC Study

### *RF-3 – West Wing Attic*

There are intake and exhaust louvers directly above the unit. From discussions with facility staff there are issues during the winter with snow getting pulled into the unit. This is due to the louver being too small and having a velocity that allows snow particles to get pulled into the ductwork.



*RF-3 - Exhaust Louver*



*AHU-3 – Intake Louver*

Visible portions of the existing ductwork are in fair condition. However, the connections to the chimneys used to supply the lower floors appear to be in subpar condition. This is most likely where the majority of the leakage is happening. Since it is not possible to see what the status of the chimney liners are or if they were ever installed, it can be assumed the air that does get into the chimneys will have additional leakage within the chimney.

## State of Maine, State House, HVAC Study

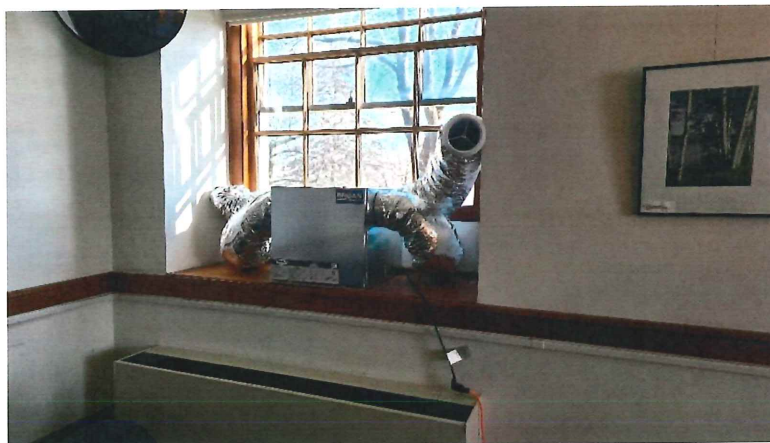


*Typical Chimney Duct Connection.*

Overall, AHU-3 system is in fair condition. There are some findings that will be discussed in the TAB section that will need to be addressed. Making changes to the system this size of this may result in energy code upgrade issues. The code will mostly likely require heat recovery; there are several options for this but may have a large affect to the existing attic area.

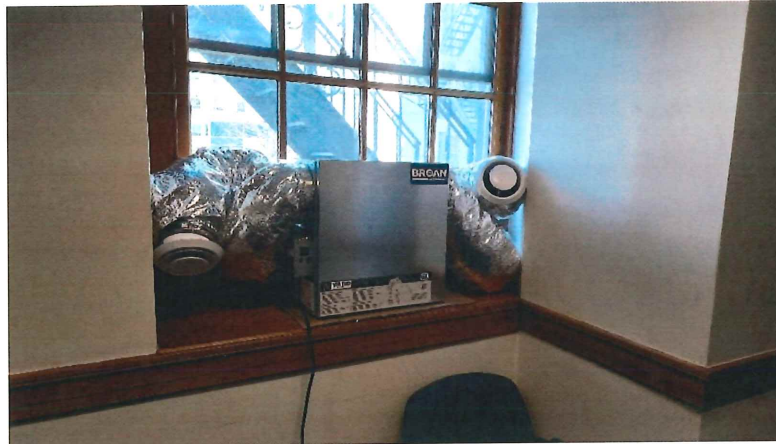
### *Temporary Solution*

After the radon testing was done in March of 2024 there were eleven window Energy Recovery Ventilators installed on the bottom floor. This provides one half of the recommended HVAC radon mitigation methods, dilution. Since these units exhaust the same amount of air that they intake there is no additional pressurization that is provided with these units.



*Typical 210 CFM ERV – First Floor*

## State of Maine, State House, HVAC Study



*Typical 130 CFM ERV – First Floor*

Installation of these units has decreased the radon levels to an acceptable level but are not a permanent, efficient or aesthetically pleasing solution for the State House.

### ***Radon Testing and Reports***

Reports by Goodwin Environmental Testing Inc. for the state house show that the ERVs are diluting the radon and are now able to meet EPA level regulations. Attached are the Reports, the floor plan and chart with radon levels pre and post ERVs. There are two takeaways from these reports. The first takeaway is there needs to be more outside air supplied to these rooms in a permanent manner. Also, the percentage the radon amount drops in some rooms provides insight, that with some increased air flow can reduce the radon levels since most rooms had built up level due to lack of proper air flow.

### ***Testing and Balancing Report (Field Testing)***

It was confirmed from the Radon Report that the additional ERV airflows brings the radon levels below the EPA limits. Harriman contracted Central Air Balance to test the status of the Air Handler Systems and their distribution. The report for the readings is attached. The TAB agent was on site with facility staff. They visited every room in the State House and took readings of all visible registers, grilles, and diffusers. They also took additional readings that were requested by Harriman in the mechanical spaces.

From this report it is evident there is a significant leakage issue with the ductwork. The first floor suffers from this drastically. There is only ~25% of the design air being delivered to the rooms on this floor.

	Sum Outlets (CFM)	Unit Traverse (CFM)	% of Traverse
NORTH, SOUTH, AND CENTER WINGS	2,304	2,641	87%
WEST WING NORTH	1,329	2,125	63%
WEST WING SOUTH	1,069	2,147	50%
AHU-3	4,702	6,913	68%

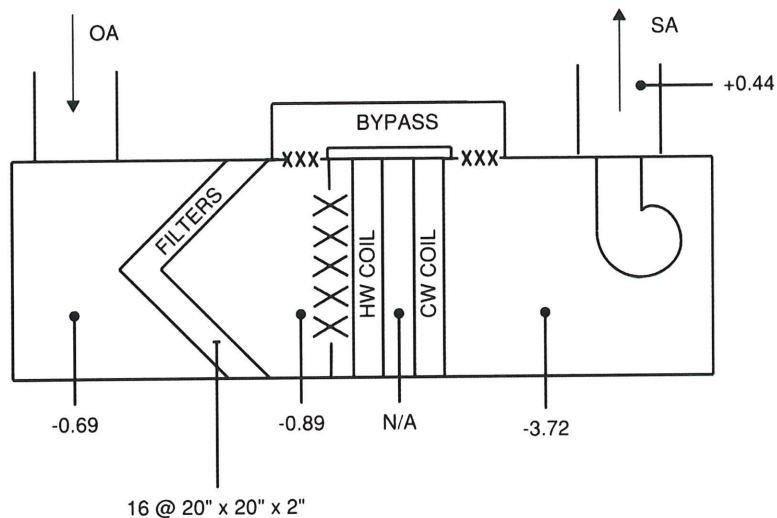


## State of Maine, State House, HVAC Study

If the existing unit were able to supply the original design airflows it would exceed the test flow combined with ERVs. The design airflow also meets the ASHRAE ventilation minimums. There are some areas that are low on flow and do not require an ERV and there are some that are close to design flow and still require an ERV. Based on fixing the air leakage to these would solve the first floor but the flow may need to be adjusted to meet at minimum what is currently there so it will maintain the same dilution.

ORIGINAL DESIGN	3,690 (CFM)
FIELD TEST	932 (CFM)
LOCAL ERV'S	1,940 (CFM)
EXISTING TOTAL (TEST + ERV)	2,872 (CFM)
ASHRAE RECOM. MINIMUM	3,479 (CFM)

Having a unit leak 30% of the air from the mechanical space may seem like the biggest problem with the system. However, to compound this issue the unit was designed to supply ~14,000 CFM making the current flow delivered to the spaces only 33% of design. There are many reasons this could happen. As shown on the static profile of the unit the fan is making 4.16 in. WG. This is much larger than the design 2.6 in. WG the unit was designed to. The leaving pressure is much lower than the design of 2.0 in. WG. This is due to the coils having ~ 3.0 in. WG. of pressure drop. When designing an AHU, it is expected that these coils to have ~0.5 in. WG each at most. The assumption for this increased pressure drop will be discussed in the next section.



AHU-3 – Static Profile

Overall, TAB report came back as expected for a building this age. There are some topics in general recommendations that will improve the performance of these units. This report was just a preliminary test. It is recommended that HVAC system to be rebalanced every 5 years. With this system serving as a radon mitigation system as well, Harriman would recommend testing at minimum the first floor every year.

## State of Maine, State House, HVAC Study

### *Other TAB Findings*

All below findings were found during the testing of the system. Harriman discussed these topics with the TAB agent post testing.

#### *Filters*

The filters in the units are past life expectancy. These filters should be changed at a minimum of every 6 months. There are many that have collapsed and ineffective due to being clogged.



*AHU-1 Filters*



*AHU-2 Filters*

#### *Coils*

The coils in all the units are dirty and the debris is causing the coils to be clogged and increasing the pressure it takes to pull the air through them. These coils should be cleaned and maintain with a yearly cleaning of the coils to reduce pressure drop, improve efficiency and performance of the units.



## State of Maine, State House, HVAC Study



*AHU-3 Coil*



*AHU-1 Coil*

### *Closed OA*

It was also noted that on AHU-1 and AHU-2 the outside air dampers were shut during testing. This may not be a problem since they may be close during unoccupied time or on a schedule. It is recommended to confirm the operation during occupied times and of all motorized dampers every 1-2 years.



*Outside Air Damper*

### *Open ducts*

There were multiple ducts that were connected to no diffusers or grilles found during the testing. This causes significant leakage. It is recommended prior to the balance of the system to verify that all ductwork is properly connected to the intended diffuser.

## State of Maine, State House, HVAC Study



*Open Duct Above Ceiling*



*Open Duct in Attic*

### *VFD*

The VFD for AHU-3 was not operational. It is assumed that the unit is running at 60 Hz. It is recommended to use a VFD to control AHU motors.



### **Radon Recommendations**

All these options were also summarized into the table attached.

#### *Option 1 – Dilution*

The first option is to return the existing system to design conditions. This will provide the same dilution rates that the temporary ERVs are currently providing. All recommended maintenance to the units should be done for this option. There are two ways to tackle this option. Each solution has its benefits and drawbacks.

The first solution is to reuse the existing ductwork and inspect all ductwork and seal all leaks. Along with that, new chimney duct sleeves would need to be installed to reduce air leakage. After all sealing and liner replacement is done an air leakage test shall be done. This solution allows for the least invasive work in the occupiable areas. However, the ductwork for this building is already 25 years old, which is 5 years away from the ASHRAE estimated life expectancy. The cost of this may seem to be less expensive than the second solution below however there are many more variables such as the amount of sealing needed and feasibility of re-sleeving the chimneys.

The second option is to fully replace the ductwork system and provide new ductwork drops. New chases would need to be located around the building where the chimneys were used

## State of Maine, State House, HVAC Study

to provide air to the lower floors. This would result in a significantly better end product than the first solution. The chases would allow for better access to the ductwork drops. This work would be a significant disruption and the building would have construction in large areas. There would need to have asbestos testing at all drop locations and abatement of any asbestos.

Along with these upgrades and maintenance to the system. The system design should be rebalanced to provide more airflow where the airflow of the ERV and preliminary test was more than the design. There are also areas where the design calls for much more than the current total air flow and ASHRAE minimum. This air can be moved to and from the other rooms that need it. This will not impact the overall design of the system but shifts airflows on a room level.

Once all deficiencies are corrected an overall building balance should be completed. After the balance, a radon test should also be done again to verify that the system is operating as intended. This is what Harriman would recommend for the State House due to the initial cost, least invasive and has the greatest overall impacts. This option should also be completed regardless of which option is chosen to ensure proper ventilation of the spaces within the entire building

### *Option 2 – Sealing with Dilution*

This option is an addition to all work in Option 1. This adds onto the EPA recommendation of filling all cracks that communicate with below slab. The scope of this is large since all flooring finishes on the first floor would need to be removed to be able to seal the cracks. Depending on the age of floor finishes there could be significant abatement implications. Once all openings are sealed the amount of radon that would enter the space would decrease. There would be no additional equipment for this.

### *Option 3 – ASD Mitigation System with Dilution*

This option is an addition to all work in Option 1 and Option 2. This would be preforming and designing radon mitigation based on attached white paper. There would have to be extensive testing to find suction points that would create negative pressure under the slab in all areas. Depending on the age of floor finishes, there could be abatement implications during testing.

After the suction points are designated then comes the second impediment where any air suctioned from below slab must be evacuated a minimum 6" above roof per code. This would result in a significant amount of PCV piping to be run throughout the building and through and up the floors. This is where testing for asbestos and abating the location of pipe rises increases the cost of the project exponentially depending on amount of suction locations needed.

## **General Recommendations**

- Clean Coils
  - Clean all the coils (Hot and Chilled Water) for the AHUs.
  - Maintain cleaning them on a yearly basis.
- Change Air Handler Filters
  - Replace all the filters for the AHUs.
  - Maintain replacing them every 6 months at minimum.
- Verify AHU-1 & 2 OA louvers are operating correctly.



## State of Maine, State House, HVAC Study

- Verify existing sequences are operational.
  - Test all motorized dampers every 3-5 years.
- Install new intake hood for AHU-3 to reduce snow entering unit.
  - There is not a way to make a louver work with the amount of outside air that the unit is designed for that will not pull snow in during the winter. Therefore, an intake hood would be the best option to reduce the snow entering. This would need another roof penetration if all existing locations were in use.
- Prepare for the end of expected life of equipment.
  - Per ASHRAE equipment life span for all interior equipment is 30 years. All the units in the State House are 25 years old. The state should prepare to replace the units within the next 5-10 years.

### **Construction Cost Estimation**

Harriman contracted PCM Company to estimate the two solutions to Option 1. PCM used the data and drawings provided in the report to compile a cost estimate for the construction for these solutions. These estimates may have large variance due to unknowns and phasing. Harriman recommends to budget for 150% of the estimated cost.

Solution	PCM	Budget
1	\$781,000	\$1,172,000
2	\$2,613,000	\$3,918,000

### **Conclusions**

Radon mitigation for the State House is not a simple task. While the temporary ERVs can mitigate the radon currently they need to be replaced by a permanent solution. These solutions are provided above. For the age of the equipment in the State House it is all in relatively good condition. There are some maintenance points that need to be addressed more frequently.

From discussions with the state on draft reports, option 1 seems that direction that is best to head in for the building. The state has requested Harriman to prepare a proposal to provide a cost estimate of the two different solutions in option 1 and then a decision will be made to select the most effective solution.

System Description	Cost Considerations	Pros	Cons
<b>Option 1: Dilution (Solution 1)</b> <ul style="list-style-type: none"> <li>Seal Existing Ductwork</li> <li>Install duct Sleeves in existing chimneys</li> <li>Adjust design air flows of first floor diffusers</li> <li>Full systems Balance</li> </ul>	<ul style="list-style-type: none"> <li>Lowest cost \$\$</li> <li>All equipment is existing.</li> </ul>	<ul style="list-style-type: none"> <li>The least invasive to occupied areas.</li> <li>Existing systems capable of providing enough ventilation air to mitigate radon.</li> <li>No extra equipment.</li> </ul>	<ul style="list-style-type: none"> <li>Sealing ductwork is hard to estimate cost.</li> <li>Sleeving Chimneys is invasive and will have large labor cost.</li> <li>Regular maintenance is required to ensure proper radon mitigation. Otherwise, radon levels could become elevated.</li> <li>Dilution only provides minimal reduction in the amount of radon entering the space.</li> </ul>
<b>Option 1: Dilution (Solution 2)</b> <ul style="list-style-type: none"> <li>All new ductwork.</li> <li>New duct drops.</li> <li>Adjust design air flows of first floor diffusers</li> <li>Full systems Balance</li> </ul>	<ul style="list-style-type: none"> <li>Medium cost \$\$\$</li> <li>All new ductwork</li> <li>All equipment is existing.</li> </ul>	<ul style="list-style-type: none"> <li>All new air distribution system.</li> <li>Best result of delivering designed air flows.</li> <li>Existing systems capable of providing enough ventilation air to mitigate radon.</li> <li>No extra equipment.</li> </ul>	<ul style="list-style-type: none"> <li>Construction will cause significant disruption in occupied portions of the building.</li> <li>Regular maintenance is required to ensure proper radon mitigation. Otherwise, radon levels could become elevated.</li> <li>Dilution only provides minimal reduction in the amount of radon entering the space.</li> </ul>
<b>Option 2: Sealing with Dilution</b> <ul style="list-style-type: none"> <li>Seal Cracks on First floor</li> <li>Include All topics in option 1.</li> </ul>	<ul style="list-style-type: none"> <li>High cost \$\$\$\$</li> <li>Removing and installing floor finishes.</li> <li>Abatement</li> </ul>	<ul style="list-style-type: none"> <li>Reduces the amount of radon leakage.</li> <li>No extra equipment.</li> </ul>	<ul style="list-style-type: none"> <li>Removal of floor finishes on the first floor.</li> <li>Depending on existing floor finishes there could be high abatement cost.</li> </ul>
<b>Option 3: ASD Mitigation System</b> <ul style="list-style-type: none"> <li>Perform test for suction points</li> <li>Install necessary suction points</li> </ul>	<ul style="list-style-type: none"> <li>Highest cost \$\$\$\$\$</li> <li>Floor Penetrations</li> <li>Abatement</li> </ul>	<ul style="list-style-type: none"> <li>The most permanent system.</li> <li>If HVAC loses performance maintains mitigation.</li> </ul>	<ul style="list-style-type: none"> <li>Coring through slab.</li> <li>Extreme scope of work.</li> <li>PVC piping through all floors.</li> <li>Significant amount of test</li> </ul>

Harriman

<ul style="list-style-type: none"><li>Recommend Including All topics in option 1.</li></ul>			<ul style="list-style-type: none"><li>holes.</li><li>Depending on testing and the amount of suction holes there may be areas that need to be unoccupied during construction.</li></ul>
---	--	--	--

Table 1: Option Comparison

# MAINE STATE HOUSE AUGUSTA, MAINE

Preliminary Air Survey  
Report  
by

## Central Air Balance Inc.

P. O. Box 100  
Lisbon, Maine 04250  
CENAIRBAL@AOL.COM

DATE JULY 08, 2025

PROJECT MAINE STATE HOUSE

ADDRESS \_\_\_\_\_

AUGUSTA, MAINE 04330

ARCHITECT \_\_\_\_\_

ENGINEER \_\_\_\_\_

HVAC CONTRACTOR \_\_\_\_\_

## CENTRAL AIR BALANCE INC

APPARATUS TEST  
TEST REPORTPROJECT MAINE STATE HOUSE SYSTEM / UNIT AHU-1

LOCATION \_\_\_\_\_

UNIT DATA		MOTOR DATA	
MAKE / MODEL NO.	TRANE / MCCA030GA	MAKE / FRAME	
TYPE / SIZE		H. P. / RPM	
SERIAL NUMBER	K98G76052	VOLTS / PHASE / HERTZ	
ARRANGEMENT / CLASS		F. L. AMPS / S. F.	
DISCHARGE	HORIZONTAL	MAKE SHEAVE	
MAKE SHEAVE		SHEAVE DIAM. / BORE	
SHEAVE DIAM. / BORE		SHEAVE $\phi$ DISTANCE	
NO. BELTS / MAKE / SIZE			
NO. FILTERS / TYPE / SIZE			

TEST DATA	DESIGN	ACTUAL	TEST DATA	DESIGN	ACTUAL
TOTAL CFM		8,288	DISCHARGE S. P.		
TOTAL S. P.			SUCTION S. P.		
FAN RPM	----		REHEAT COIL $\Delta$ S. P.	----	
MOTOR RPM			COOLING COIL $\Delta$ S. P.	----	
MOTOR VOLTS $\begin{matrix} T_1-T_2 & T_2-T_3 \\ T_3-T_1 \end{matrix}$			PREHEAT COIL $\Delta$ S. P.	----	----
MOTOR AMPS $T_1 \ T_2 \ T_3$			PREFILTERS $\Delta$ S. P.	----	----
BHP	----		FINAL FILTERS $\Delta$ S. P.	----	
MOTOR SPEED / SETTING					
RETURN AIR CFM					
OUTSIDE AIR CFM			OUT. AIR PERCENTAGE		
			RET. AIR PERCENTAGE		

REMARKS:

TEST DATE 07-08-2025 READINGS BY G.HILL PAGE \_\_\_\_ OF \_\_\_\_

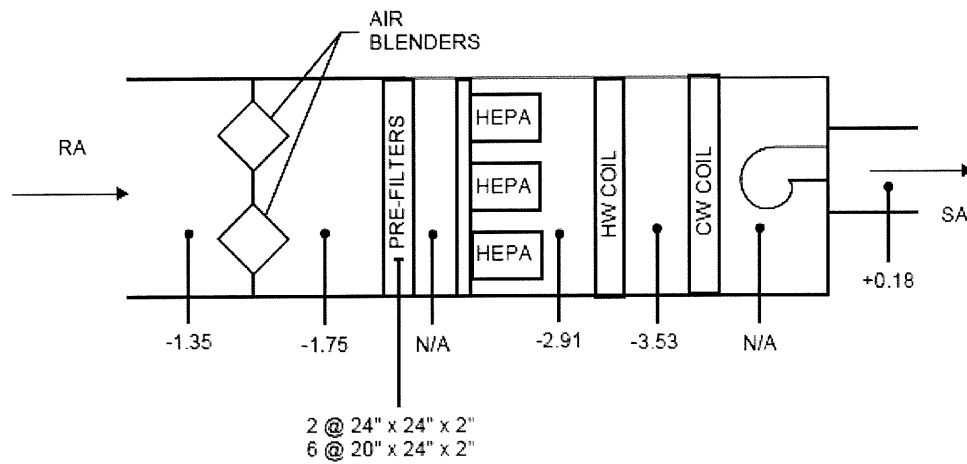


# CENTRAL AIR BALANCE INC

# SYSTEM DIAGRAM

PROJECT CAPITAL BUILDING SYSTEM AHU-1

LOCATION MEDIA ROOM DATE 07-08-2025



# CENTRAL AIR BALANCE INC

# RECTANGULAR DUCT TRAVERSE REPORT

PROJECT MAINE STATE HOUSE SYSTEM / UNIT AHU-1  
 LOCATION/ZONE MECHANICAL ROOM SERVICE SUPPLY AIR  
 ALTITUDE < 1,000 DENSITY .075 CORR. FACTOR NONE

DUCT				REQUIRED				ACTUAL			
S.P.	<u>.18"</u>	AIR TEMP.	<u>° F D.B.</u>			CFM	<u></u>			CFM	<u>8,288</u>
SIZE	<u>54" X 26"</u>	SQ. FT.	<u>9.75</u>	FPM	<u></u>	CFM	<u></u>	FPM	<u>850</u>	CFM	<u></u>

DISTANCE FROM BOTTOM	POSITION	1	2	3	4	5	6	7	8	9	10	11	12	13
2.5"	1	432	959	928	1085	0								
9.5"	2	0	964	951	1309	879								
12.5"	3	0	1170	594	1335	1375								
17.5"	4	0	874	560	1942	1567								
22.5"	5	0	0	753	1684	1898								
	6													
	7													
	8													
	9													
	10													
	11													
	12													
	13													
DISTANCE FROM DUCT EDGE		6.5"	16.5"	24"	34.5"	43.5"								
VELOCITY SUB TOTALS		432	3967	3786	7355	3273								

REMARKS: 21259 (TOTAL FPM) = 850 (AVERAGE FPM) X 9.75 (FREE AREA) = 8,288 SCFM

NOTE: USED EXISTING HOLES

TEST DATE 07-08-2025 READINGS BY G.HILL PAGE  OF

## CENTRAL AIR BALANCE INC

APPARATUS TEST  
TEST REPORTPROJECT MAINE STATE HOUSE SYSTEM / UNIT AHU-2LOCATION MECHANICAL ROOM

UNIT DATA	
MAKE / MODEL NO.	TRANE / MCCA012BA
TYPE / SIZE	
SERIAL NUMBER	K99E0D224N
ARRANGEMENT / CLASS	
DISCHARGE	HORIZONTAL
MAKE SHEAVE	
SHEAVE DIAM. / BORE	
NO. BELTS / MAKE / SIZE	
NO. FILTERS / TYPE / SIZE	

MOTOR DATA	
MAKE / FRAME	
H. P. / RPM	
VOLTS / PHASE / HERTZ	
F. L. AMPS / S. F.	
MAKE SHEAVE	
SHEAVE DIAM. / BORE	
SHEAVE $\phi$ DISTANCE	

TEST DATA	DESIGN	ACTUAL
TOTAL CFM		5,903
TOTAL S. P.		
FAN RPM	----	
MOTOR RPM		
MOTOR VOLTS $\frac{T_1-T_2 \quad T_2-T_3}{T_3-T_1}$		
MOTOR AMPS $T_1 \quad T_2 \quad T_3$		
BHP	----	
MOTOR SPEED / SETTING		
RETURN AIR CFM		
OUTSIDE AIR CFM		

TEST DATA	DESIGN	ACTUAL
DISCHARGE S. P.		
SUCTION S. P.		
REHEAT COIL $\Delta$ S. P.	----	
COOLING COIL $\Delta$ S. P.	----	
PREHEAT COIL $\Delta$ S. P.	----	----
PREFILTERS $\Delta$ S. P.	----	----
FINAL FILTERS $\Delta$ S. P.	----	

OUT. AIR PERCENTAGE		
RET. AIR PERCENTAGE		

REMARKS:

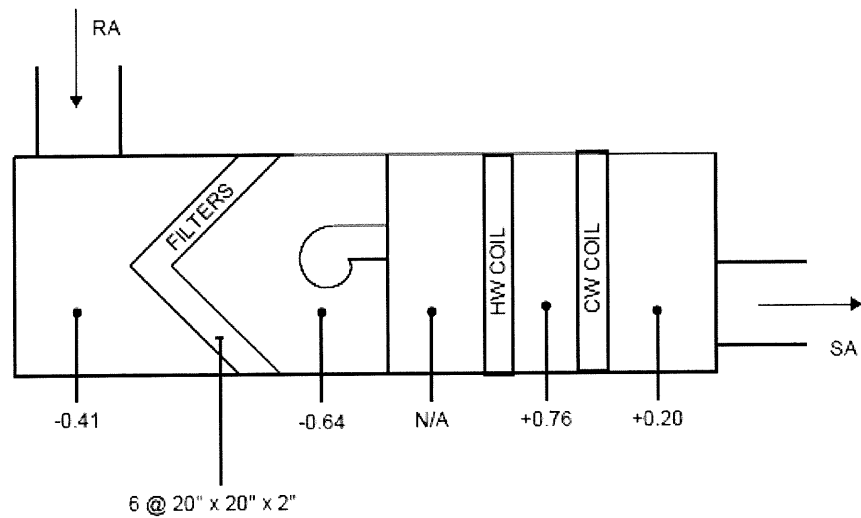
TEST DATE 07-08-2025 READINGS BY G.HILL PAGE        OF

# CENTRAL AIR BALANCE INC

# SYSTEM DIAGRAM

PROJECT MAINE STATE HOUSE SYSTEM AHU-2 "STATIC PROFILE"

LOCATION MECHANICAL ROOM DATE JULY 08, 2025



# CENTRAL AIR BALANCE INC

## RECTANGULAR DUCT TRAVERSE REPORT

PROJECT MAINE STATE HOUSE SYSTEM / UNIT AHU-2  
 LOCATION/ZONE MECHANICAL ROOM SERVICE SUPPLY AIR - (T-1)  
 ALTITUDE < 1,000 DENSITY .075 CORR. FACTOR NONE

DUCT				REQUIRED		ACTUAL	
S.P. <u>.11"</u>	AIR TEMP. <u>° F D.B.</u>			CFM <u></u>		CFM <u>3,097</u>	
SIZE <u>22" X 22"</u>	SQ. FT. <u>2.8</u>	FPM <u></u>		CFM <u></u>		FPM <u>1106</u>	CFM <u></u>

DISTANCE FROM BOTTOM	POSITION	1	2	3	4	5	6	7	8	9	10	11	12	13
3.5"	1	840	846	1145	1157									
8.5"	2	1160	1226	1170	1223									
13.5"	3	1210	1155	1134	1132									
18.5"	4	1136	1081	1018	1069									
	5													
	6													
	7													
	8													
	9													
	10													
	11													
	12													
	13													
DISTANCE FROM DUCT EDGE		3.5"	8.5"	13.5"	18.5"									
VELOCITY SUB TOTALS		4346	4308	4467	4581									

### REMARKS:

17702 (TOTAL FPM) = 1106 (AVERAGE FPM) X 2.8 (FREE AREA) = 3,097 SCFM

(T-1)= REFERS TO TRAVERSE POINT ON MECHANICAL PLANS

TEST DATE 07-08-2025 READINGS BY G.HILL PAGE  OF

# CENTRAL AIR BALANCE INC

# RECTANGULAR DUCT TRAVERSE REPORT

PROJECT MAINE STATE HOUSE SYSTEM / UNIT AHU-2  
 LOCATION/ZONE MECHANICAL ROOM SERVICE SUPPLY AIR - (T-2)  
 ALTITUDE < 1,000 DENSITY .075 CORR. FACTOR NONE

DUCT				REQUIRED		ACTUAL	
S.P. <u>0.12"</u>	AIR TEMP. <u>° F D.B.</u>			CFM <u></u>		CFM <u>2,806</u>	
SIZE <u>22" X 22" (1)</u>	SQ. FT. <u>2.8</u>	FPM <u></u>	CFM <u></u>	FPM <u>1002</u>	CFM <u></u>		

DISTANCE FROM BOTTOM	POSITION	1	2	3	4	5	6	7	8	9	10	11	12	13
3.5"	1	1627	1552	1072	1377									
8.5"	2	1745	1736	972	1570									
13.5"	3	471	946	674	907									
18.5"	4	0	352	688	325									
	5													
	6													
	7													
	8													
	9													
	10													
	11													
	12													
	13													
DISTANCE FROM DUCT EDGE		3.5"	8.5"	13.5"	18.5"									
VELOCITY SUB TOTALS		3843	4586	3406	4179									

## REMARKS:

16032 (TOTAL FPM) = 1002 (AVERAGE FPM) X 2.8 (FREE AREA) = 2,806 SCFM

(1) = FREE AREA OF A 20" X 20" WITH 1" LINER

(T-2)= REFERS TO TRAVERSE POINT ON MECHANICAL PLANS

TEST DATE 07-08-2025 READINGS BY G.HILL PAGE  OF

# CENTRAL AIR BALANCE INC

# APPARATUS TEST TEST REPORT

PROJECT MAINE STATE HOUSE SYSTEM / UNIT AHU-3

LOCATION MECHANICAL ROOM

UNIT DATA	
MAKE / MODEL NO.	TRANE / MCCA0306A
TYPE / SIZE	
SERIAL NUMBER	K99E97224M
ARRANGEMENT / CLASS	
DISCHARGE	HORIZONTAL
MAKE SHEAVE	
SHEAVE DIAM. / BORE	
NO. BELTS / MAKE / SIZE	
NO. FILTERS / TYPE / SIZE	

MOTOR DATA	
MAKE / FRAME	
H. P. / RPM	
VOLTS / PHASE / HERTZ	
F. L. AMPS / S. F.	
MAKE SHEAVE	
SHEAVE DIAM. / BORE	
SHEAVE $\phi$ DISTANCE	

TEST DATA	DESIGN	ACTUAL
TOTAL CFM		6,913
TOTAL S. P.		
FAN RPM	----	
MOTOR RPM		
MOTOR VOLTS $\frac{T_1-T_2 \quad T_2-T_3}{T_3-T_1}$		
MOTOR AMPS $T_1 \quad T_2 \quad T_3$		
BHP	----	
MOTOR SPEED / SETTING		
RETURN AIR CFM		
OUTSIDE AIR CFM		

TEST DATA	DESIGN	ACTUAL
DISCHARGE S. P.		
SUCTION S. P.		
REHEAT COIL $\Delta$ S. P.	----	
COOLING COIL $\Delta$ S. P.	----	
PREHEAT COIL $\Delta$ S. P.	----	----
PREFILTERS $\Delta$ S. P.	----	----
FINAL FILTERS $\Delta$ S. P.	----	

OUT. AIR PERCENTAGE		
RET. AIR PERCENTAGE		

REMARKS:

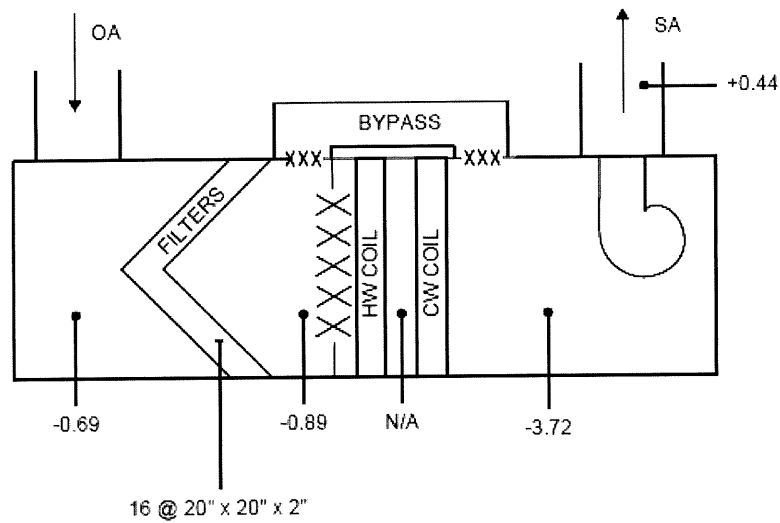
TEST DATE 07-08-2025 READINGS BY G.HILL PAGE        OF

# CENTRAL AIR BALANCE INC

# SYSTEM DIAGRAM

PROJECT MAINE STATE HOUSE SYSTEM AHU-3 "STATIC PROFILE"

LOCATION MECHANICAL ROOM DATE JULY 08, 2025





## CENTRAL AIR BALANCE INC.

RECTANGULAR DUCT  
TRAVERSE REPORTPROJECT MAINE STATE HOUSE SYSTEM / UNIT AHU-3LOCATION/ZONE MECHANICAL ROOM SERVICE SUPPLY AIR - (T-1)ALTITUDE < 1,000 DENSITY .075 CORR. FACTOR NONE

DUCT				REQUIRED				ACTUAL			
S.P.	<u>0.24"</u>	AIR TEMP.	<u>° F D.B.</u>			CFM	<u></u>			CFM	<u>2,147</u>
SIZE	<u>10" X 28"</u>	SQ. FT.	<u>1.94</u>	FPM	<u></u>	CFM	<u></u>	FPM	<u>1106</u>	CFM	<u></u>

DISTANCE FROM BOTTOM	POSITION	1	2	3	4	5	6	7	8	9	10	11	12	13
1.7"	1	659	1168	1069	1321	1166	764	1248						
5.0"	2	1215	1086	1213	1183	780	1273	980						
8.3"	3	927	1347	956	1319	1238	801	1314						
	4													
	5													
	6													
	7													
	8													
	9													
	10													
	11													
	12													
	13													
DISTANCE FROM DUCT EDGE		2.0"	6.0"	10.0"	14.0"	18.0"	22.0"	26.0"						
VELOCITY SUB TOTALS		3001	2601	3238	2823	3184	2838	3542						

## REMARKS:

23227 (TOTAL FPM) = 1106 (AVERAGE FPM) X 1.84 (FREE AREA) = 21.47 SCFM

(T-1)= REFERS TO TRAVERSE POINT ON MECHANICAL PLANS

TEST DATE 07-08-2025 READINGS BY G.HILL PAGE  OF

## CENTRAL AIR BALANCE INC

RECTANGULAR DUCT  
TRAVERSE REPORT

PROJECT MAINE STATE HOUSE SYSTEM / UNIT AHU-3  
 LOCATION/ZONE MECHANICAL ROOM SERVICE SUPPLY AIR - (T-2)  
 ALTITUDE < 1,000 DENSITY .075 CORR. FACTOR NONE

DUCT				REQUIRED		ACTUAL	
S.P. <u>0.41"</u>	AIR TEMP. <u>° F D.B.</u>			CFM <u></u>		CFM <u>2,641</u>	
SIZE <u>27" X 25"</u>	SQ. FT. <u>4.69</u>	FPM <u></u>		CFM <u></u>		FPM <u>563</u>	CFM <u></u>

DISTANCE FROM BOTTOM	POSITION	1	2	3	4	5	6	7	8	9	10	11	12	13
2.7"	1	649	344	388	813	0								
8.1"	2	720	1475	408	376	288								
13.5"	3	678	438	897	1262	248								
18.9"	4	658	518	966	136	189								
24.3"	5	311	1081	950	0	421								
	6													
	7													
	8													
	9													
	10													
	11													
	12													
	13													
DISTANCE FROM DUCT EDGE		2.5"	7.5"	12.5"	17.5	22.5								
VELOCITY SUB TOTALS		3016	3856	3609	2587	1146								

## REMARKS:

14074 (TOTAL FPM) = 563 (AVERAGE FPM) X 4.69 (FREE AREA) = 2641 SCFM

(T-2)= REFERS TO TRAVERSE POINT ON MECHANICAL PLANS

TEST DATE 07-08-2025 READINGS BY G.HILL PAGE  OF

# CENTRAL AIR BALANCE INC

# RECTANGULAR DUCT TRAVERSE REPORT

PROJECT MAINE STATE HOUSE SYSTEM / UNIT AHU-3  
 LOCATION/ZONE MECHANICAL ROOM SERVICE SUPPLY AIR - (T-3)  
 ALTITUDE < 1,000 DENSITY .075 CORR. FACTOR NONE

DUCT				REQUIRED				ACTUAL			
S.P.	<u>0.19"</u>	AIR TEMP.	<u>° F D.B.</u>			CFM	<u></u>			CFM	<u>2,125</u>
SIZE	<u>10" X 32"</u>	SQ. FT.	<u>2.22</u>	FPM	<u></u>	CFM	<u></u>	FPM	<u>957</u>	CFM	<u></u>

DISTANCE FROM BOTTOM	POSITION	1	2	3	4	5	6	7	8	9	10	11	12	13
1.7"	1	905	700	324	395	530	241	555	1197					
5.0"	2	938	757	921	823	834	1094	1345	1577					
8.3"	3	1036	1197	1178	1276	1265	1239	1333	1317					
	4													
	5													
	6													
	7													
	8													
	9													
	10													
	11													
	12													
	13													
DISTANCE FROM DUCT EDGE		2.0"	6.0"	10.0"	14.0"	18.0"	22.0"	26.0"	30.0"					
VELOCITY SUB TOTALS		2879	2654	2423	2494	2629	2574	3233	4091					

REMARKS: 22977 (TOTAL FPM) = 957 (AVERAGE FPM) X 2.22 (FREE AREA) = 2125 SCFM

(T-3)= REFERS TO TRAVERSE POINT ON MECHANICAL PLANS

TEST DATE 07-08-2025 READINGS BY G.HILL PAGE  OF

# CENTRAL AIR BALANCE INC

## HOOD EXHAUST FACE VELOCITY TEST REPORT

PROJECT MAINE STATE HOUSE

HOOD LOCATION EF-3 - STAIRWAY

### EXHAUST HOOD GRID

220 FPM	513 FPM	255 FPM	442 FPM	257 FPM	501 FPM	53 FPM	105 FPM
255 FPM	320 FPM	307 FPM	340 FPM	284 FPM	272 FPM	107 FPM	70 FPM
331 FPM	263 FPM	404 FPM	258 FPM	347 FPM	155 FPM	101 FPM	259 FPM
462 FPM	226 FPM	486 FPM	227 FPM	550 FPM	174 FPM	100 FPM	272 FPM

### FACE VELOCITIES

WIDTH AND LENGTH OF HOOD OPENING 95" X 48"

SECTORED / GRID WIDTH AND LENGTH \_\_\_\_\_

AVERAGE FACE VELOCITY TOTAL 8372 = 262 FPM AVG. x Free Area ( 31.7 ) = 8,305 CFM

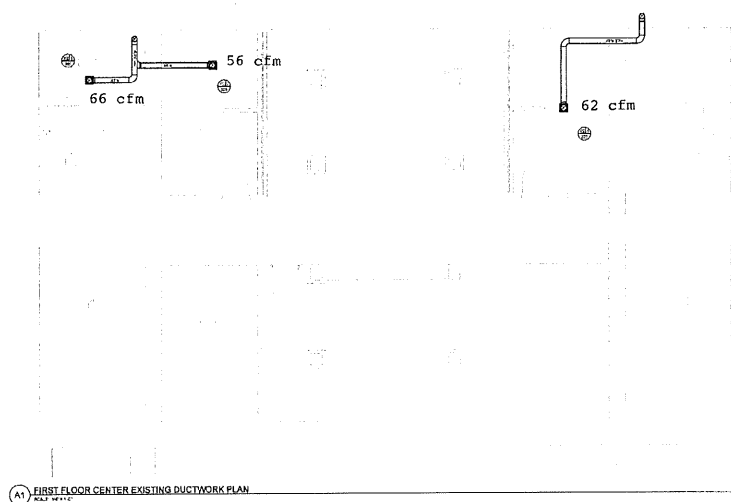
REMARKS: DATA FOR INFORMATION & ACTUAL PERFORMANCE USE ONLY.  
TEST INSTRUMENT UTILIZED SHORTRIDGE AIRDATA MULTIMETER (MODEL ADM-870).

TEST DATE 07-08-2025 READINGS BY G.HILL Page \_\_\_\_\_ Of \_\_\_\_\_

Harriman

STATE OF MAINE  
STATE HOUSE  
HVAC ASSESSMENT

SCALE  
SHEET NUMBER 1222



(A) FIRST FLOOR CENTER EXISTING DUCTWORK PLAN

DATE  
BY

PRELIMINARY  
NOT FOR  
CONSTRUCTION

EXISTING CONDITION DRAFT

DATE  
BY

DATE  
BY

DATE  
BY

DATE  
BY

DATE  
BY

DATE  
BY

DATE  
BY

DATE  
BY

DATE  
BY

DATE  
BY

DATE  
BY

DATE  
BY

DATE  
BY

DATE  
BY

DATE  
BY

DATE  
BY

DATE  
BY

DATE  
BY

DATE  
BY

DATE  
BY

DATE  
BY

DATE  
BY

DATE  
BY

DATE  
BY

DATE  
BY

DATE  
BY

DATE  
BY

DATE  
BY

DATE  
BY

DATE  
BY

DATE  
BY

DATE  
BY

DATE  
BY

DATE  
BY

DATE  
BY

DATE  
BY

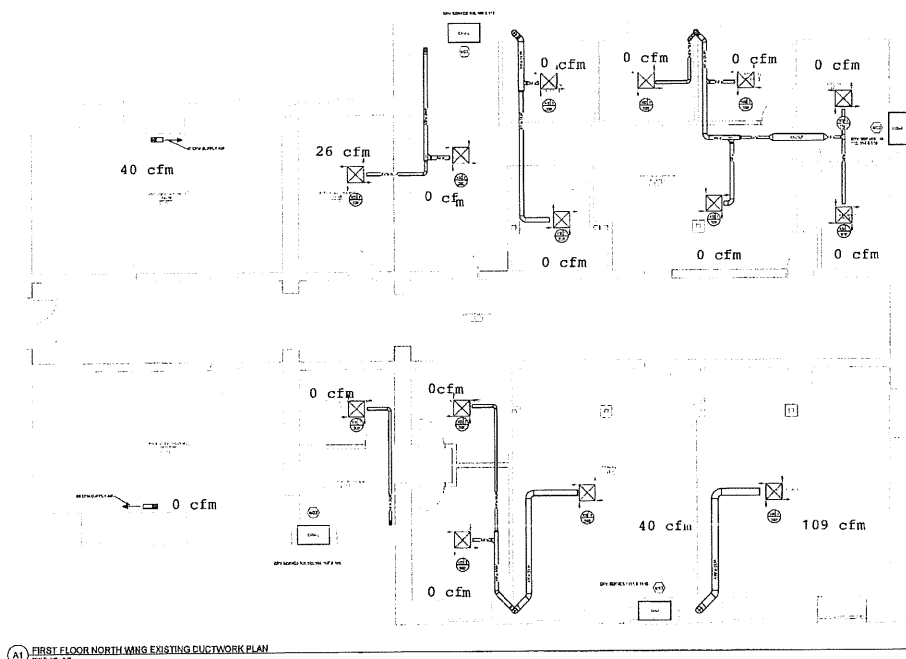
FIRST FLOOR CENTER  
EXISTING DUCTWORK  
M10-1C

# Harriman

STATE OF MAINE  
STATE HOUSE  
HVAC ASSESSMENT

AUGUST 14, 2023

KEY NOTES	
1. SEE KEY PLAN FOR LOCATION OF THIS DRAWING.	
2. SEE KEY PLAN FOR LOCATION OF THIS DRAWING.	



A1 FIRST FLOOR NORTH WING EXISTING DUCTWORK PLAN

PRELIMINARY  
NOT FOR  
CONSTRUCTION

EXISTING CONDITION DRAFT

DATE: 08/14/23

BY: [Signature]

FOR: [Signature]

DATE: 08/14/23

BY: [Signature]

FOR: [Signature]

DATE: 08/14/23

BY: [Signature]

FOR: [Signature]

DATE: 08/14/23

BY: [Signature]

FOR: [Signature]

DATE: 08/14/23

BY: [Signature]

FOR: [Signature]

DATE: 08/14/23

BY: [Signature]

FOR: [Signature]

DATE: 08/14/23

BY: [Signature]

FOR: [Signature]

DATE: 08/14/23

BY: [Signature]

FOR: [Signature]

DATE: 08/14/23

BY: [Signature]

FOR: [Signature]

DATE: 08/14/23

BY: [Signature]

FOR: [Signature]

DATE: 08/14/23

BY: [Signature]

FOR: [Signature]

DATE: 08/14/23

BY: [Signature]

FOR: [Signature]

DATE: 08/14/23

BY: [Signature]

FOR: [Signature]

DATE: 08/14/23

BY: [Signature]

FOR: [Signature]

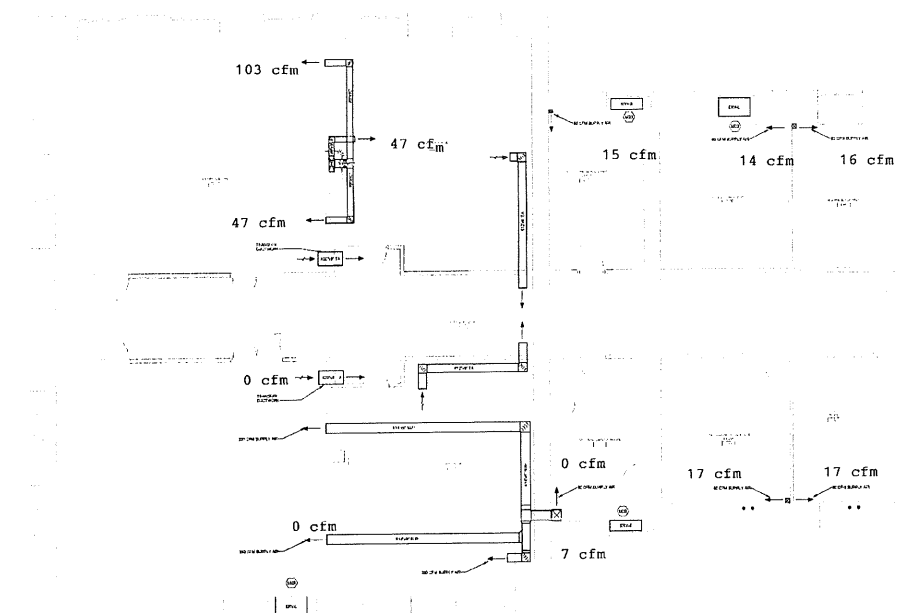
M10-1N

Harriman

STATE OF MAINE  
STATE HOUSE  
HVAC ASSESSMENT

PROJECT NO. 1100

KEY NOTES	
CODE	DESCRIPTION
1	EXISTING DUCTWORK
2	NEW DUCTWORK
3	EXISTING VENTILATION
4	NEW VENTILATION



A1 FIRST FLOOR SOUTH WING EXISTING DUCTWORK PLAN  
SCALE: 1/8" = 1'-0"

PRELIMINARY  
NOT FOR  
CONSTRUCTION

EXISTING CONSTRUCTION DRAFT

FIRST FLOOR SOUTH  
WING EXISTING  
DUCTWORK

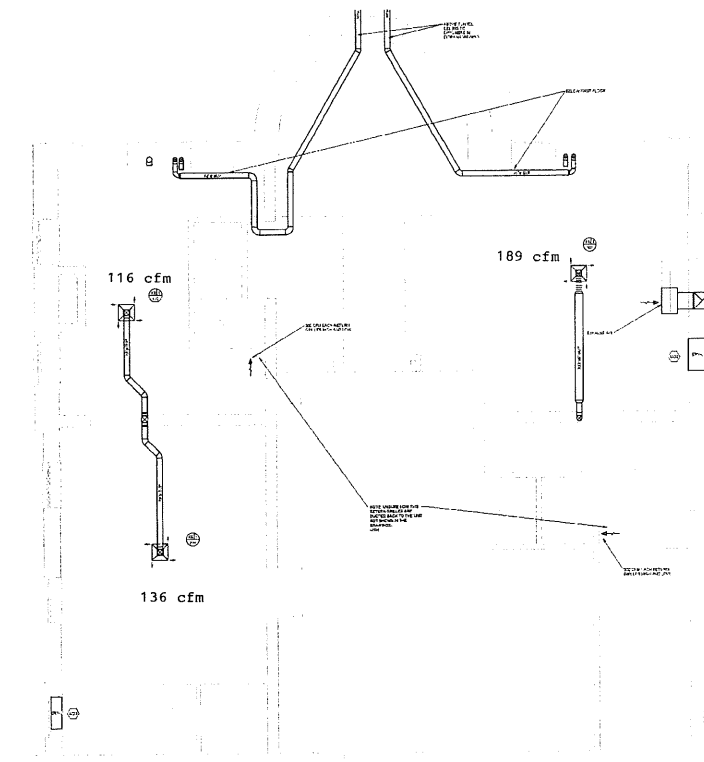
M10-1S

Harriman

STATE OF MAINE  
STATE HOUSE  
HVAC ASSESSMENT

DATE: 10/15/10  
BY: J. HARRIMAN

KEY NOTES	
1. SEE MECHANICAL SCHEDULE FOR DUCTWORK SIZES.	
2. SEE MECHANICAL SCHEDULE FOR VENT SIZES.	



A1 FIRST FLOOR WEST WING EXISTING DUCTWORK PLAN  
REV. 10-15-10

PRELIMINARY  
NOT FOR  
CONSTRUCTION

EXISTING CONDITION DRAFT

DATE: 10/15/10	BY: J. HARRIMAN
DATE: 10/15/10	BY: J. HARRIMAN
DATE: 10/15/10	BY: J. HARRIMAN
DATE: 10/15/10	BY: J. HARRIMAN
DATE: 10/15/10	BY: J. HARRIMAN
DATE: 10/15/10	BY: J. HARRIMAN
DATE: 10/15/10	BY: J. HARRIMAN
DATE: 10/15/10	BY: J. HARRIMAN
DATE: 10/15/10	BY: J. HARRIMAN
DATE: 10/15/10	BY: J. HARRIMAN

FIRST FLOOR WEST WING  
EXISTING DUCTWORK

M10-1W



Harriman

STATE OF MAINE  
STATE HOUSE  
HVAC ASSESSMENT

ASSEMBLY  
REPRESENTATIVE



A1 SECOND FLOOR CENTER EXISTING DUCTWORK PLAN  
SCALE: 1/4" = 1'-0"

REVISIONS

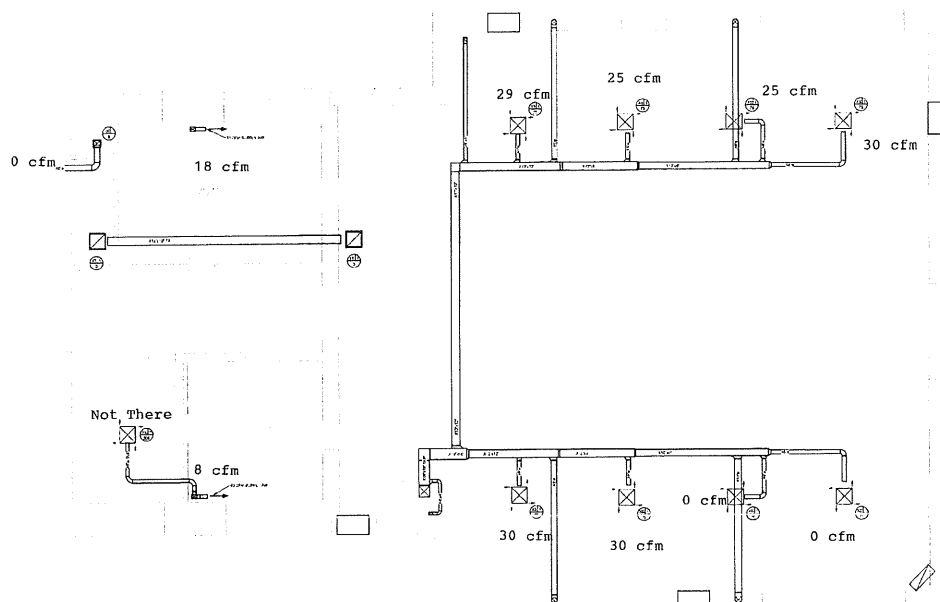
PRELIMINARY  
NOT FOR  
CONSTRUCTION

EXISTING CONDITION DRAFT

DATE: 10/1/2010  
PROJECT: STATE HOUSE  
DRAWN BY: J. HARRIMAN  
CHECKED BY: J. HARRIMAN  
APPROVED BY: J. HARRIMAN

SECOND FLOOR CENTER  
EXISTING DUCTWORK

M10-2C



**A1 SECOND FLOOR NORTH WING EXISTING DUCTWORK PLAN**  
SCALE 1/8" = 1'-0"

PRELIMINARY  
NOT FOR  
CONSTRUCTION

EXISTING CONDITION DRAFT

SECOND FLOOR NORTH  
WING EXISTING  
DUCTWORK

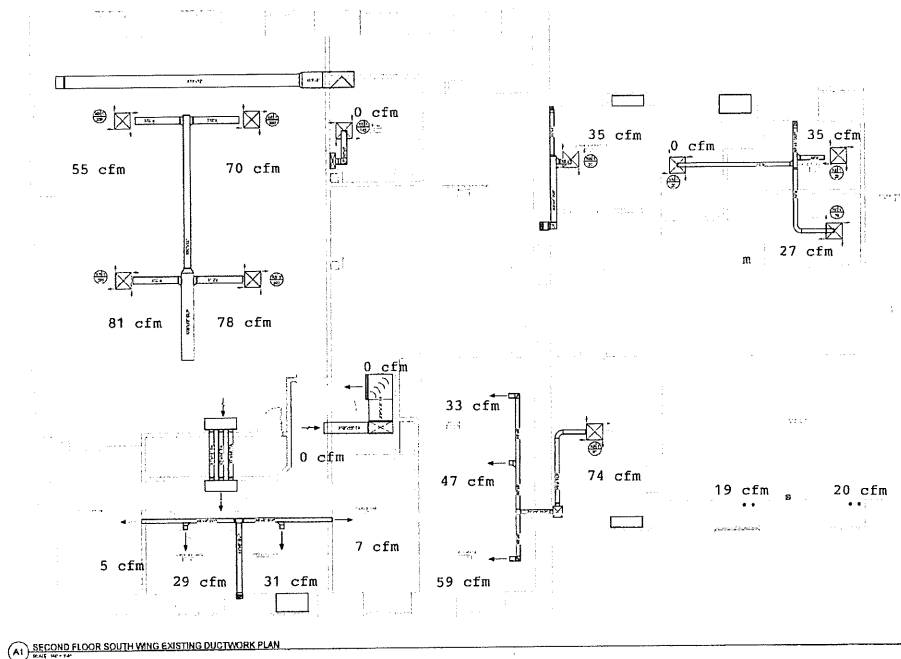
M10-2N

Harriman

STATE OF MAINE  
STATE HOUSE  
HVAC ASSESSMENT

PROJECT NO.

DATE



A1 SECOND FLOOR SOUTH WING EXISTING DUCTWORK PLAN

PRELIMINARY  
NOT FOR  
CONSTRUCTION

EXISTING CONDITION DRAFT

DATE: 10/10/2011

BY: [Signature]

DATE: 10/10/2011

BY: [Signature]

DATE: 10/10/2011

BY: [Signature]

DATE: 10/10/2011

BY: [Signature]

DATE: 10/10/2011

BY: [Signature]

DATE: 10/10/2011

BY: [Signature]

DATE: 10/10/2011

BY: [Signature]

DATE: 10/10/2011

BY: [Signature]

DATE: 10/10/2011

BY: [Signature]

DATE: 10/10/2011

BY: [Signature]

DATE: 10/10/2011

BY: [Signature]

DATE: 10/10/2011

BY: [Signature]

DATE: 10/10/2011

BY: [Signature]

DATE: 10/10/2011

BY: [Signature]

DATE: 10/10/2011

BY: [Signature]

DATE: 10/10/2011

BY: [Signature]

DATE: 10/10/2011

BY: [Signature]

DATE: 10/10/2011

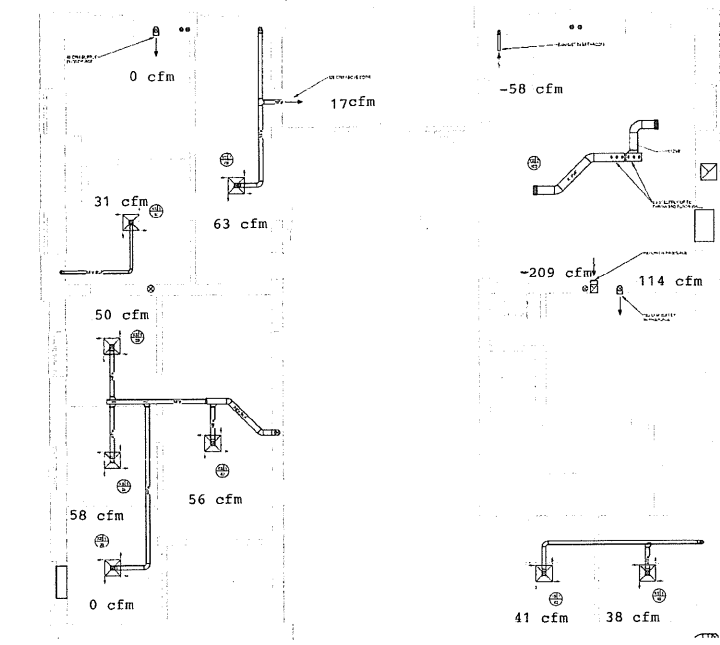
BY: [Signature]

M10-2S

Harriman

STATE OF MAINE  
STATE HOUSE  
HVAC ASSESSMENT

DATE: 10/10/18  
BY: [Signature]



A1 SECOND FLOOR WEST WING EXISTING DUCTWORK PLAN

PRELIMINARY  
NOT FOR  
CONSTRUCTION

EXISTING CONDITION DRAFT

DATE: 10/10/18
BY: [Signature]
CHECKED BY: [Signature]
APPROVED BY: [Signature]

SECOND FLOOR WEST  
WING EXISTING  
DUCTWORK

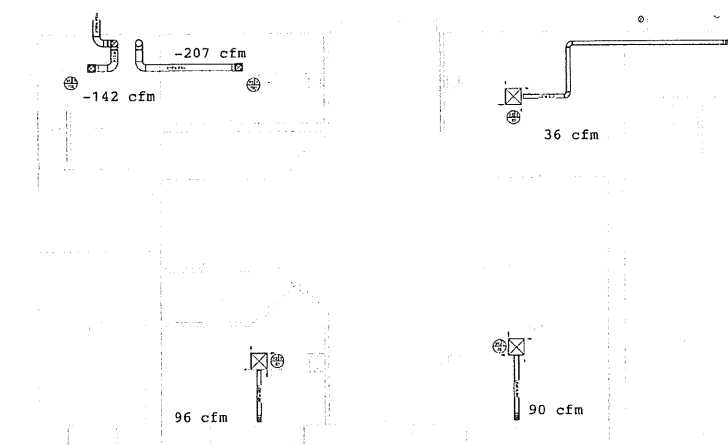
M10-2W

Harriman

STATE OF MAINE  
STATE HOUSE  
HVAC ASSESSMENT

SCALE: 1/8" = 1'-0"

DATE: 10/1/10



(A) THIRD FLOOR CENTER EXISTING DUCTWORK PLAN  
SCALE: 1/8" = 1'-0"

PRELIMINARY  
NOT FOR  
CONSTRUCTION

EXISTING CONDITION DRAFT

DATE: 10/1/10

REVISIONS:

NO. DESCRIPTION

1.00

2.00

3.00

4.00

5.00

6.00

7.00

8.00

9.00

10.00

11.00

12.00

13.00

14.00

15.00

16.00

17.00

18.00

19.00

20.00

21.00

22.00

23.00

24.00

25.00

26.00

27.00

28.00

29.00

30.00

31.00

32.00

33.00

34.00

35.00

36.00

37.00

38.00

39.00

40.00

41.00

42.00

43.00

44.00

45.00

46.00

47.00

48.00

49.00

50.00

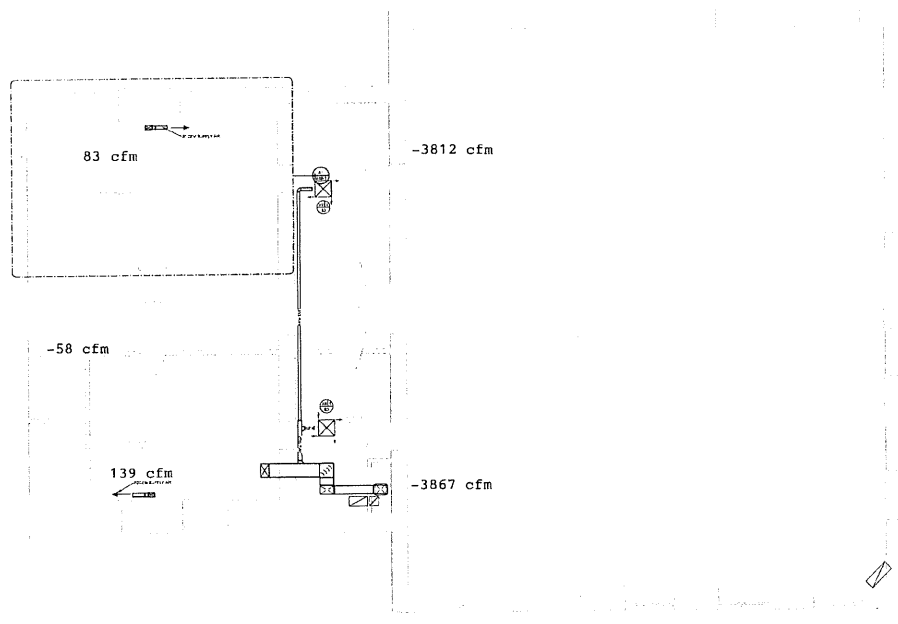
THIRD FLOOR CENTER  
EXISTING DUCTWORK

M10-3C

Harriman

STATE OF MAINE  
STATE HOUSE  
HVAC ASSESSMENT

FIGURE 14  
EXISTING DUCTWORK



A1 THIRD FLOOR NORTH WING EXISTING DUCTWORK PLAN

PRELIMINARY  
NOT FOR  
CONSTRUCTION

EXISTING CONDITION DRAFT

DATE: 10/10/2017  
DRAWN BY: J. HARRIMAN  
CHECKED BY: J. HARRIMAN  
APPROVED BY: J. HARRIMAN

THIRD FLOOR NORTH  
WING EXISTING  
DUCTWORK

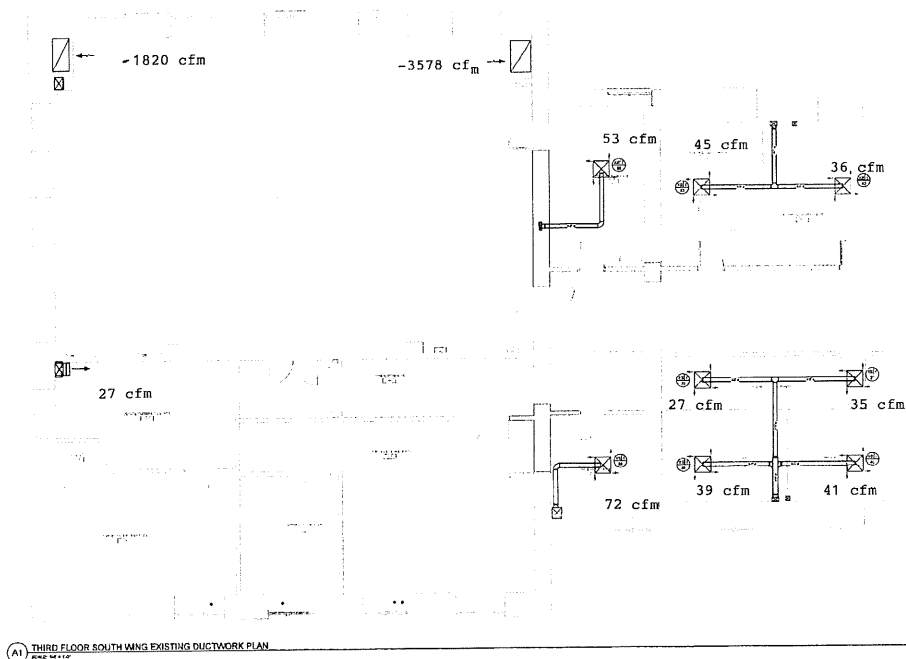
M10-3N

Harriman

STATE OF MAINE  
STATE HOUSE  
HVAC ASSESSMENT

DATE: 01/14/10

PROJECT: STATE HOUSE  
DRAWING: M10-3S



A1 THIRD FLOOR SOUTH WING EXISTING DUCTWORK PLAN

PRELIMINARY  
NOT FOR  
CONSTRUCTION

EXISTING CONDITION DRAFT

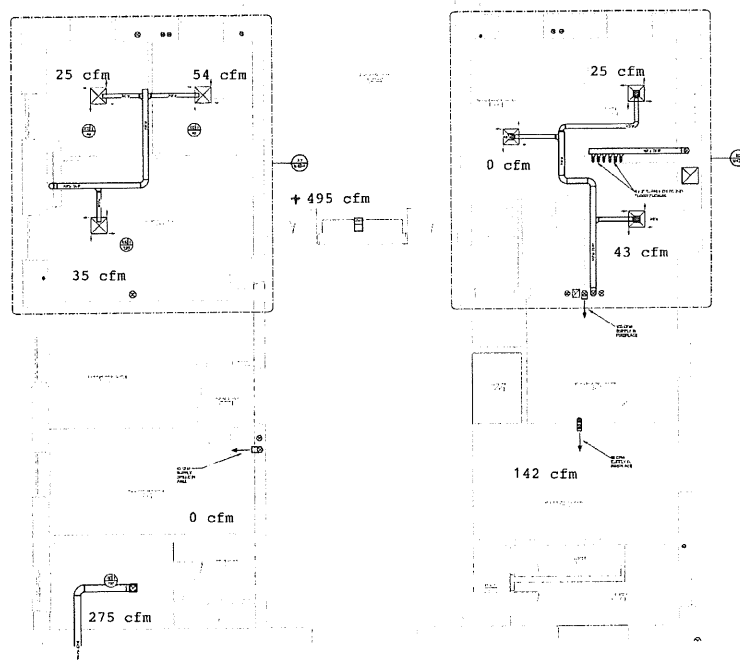
THIRD FLOOR SOUTH  
WING EXISTING  
DUCTWORK

M10-3S

Harriman

STATE OF MAINE  
STATE HOUSE  
HVAC ASSESSMENT

ASSETS 44  
REVISIONS 12 1/17 1/18



A1 THIRD FLOOR WEST WING EXISTING DUCTWORK PLAN  
DATE: 12/17/17

REVISIONS

PRELIMINARY  
NOT FOR  
CONSTRUCTION

EXISTING CONDITION DRAFT

DATE: 12/17/17

BY: [Signature]

DATE: 12/17/17

BY: [Signature]

DATE: 12/17/17

BY: [Signature]

DATE: 12/17/17

BY: [Signature]

DATE: 12/17/17

BY: [Signature]

DATE: 12/17/17

BY: [Signature]

DATE: 12/17/17

BY: [Signature]

DATE: 12/17/17

BY: [Signature]

DATE: 12/17/17

BY: [Signature]

DATE: 12/17/17

BY: [Signature]

DATE: 12/17/17

BY: [Signature]

DATE: 12/17/17

BY: [Signature]

DATE: 12/17/17

BY: [Signature]

DATE: 12/17/17

BY: [Signature]

DATE: 12/17/17

BY: [Signature]

M10-3W

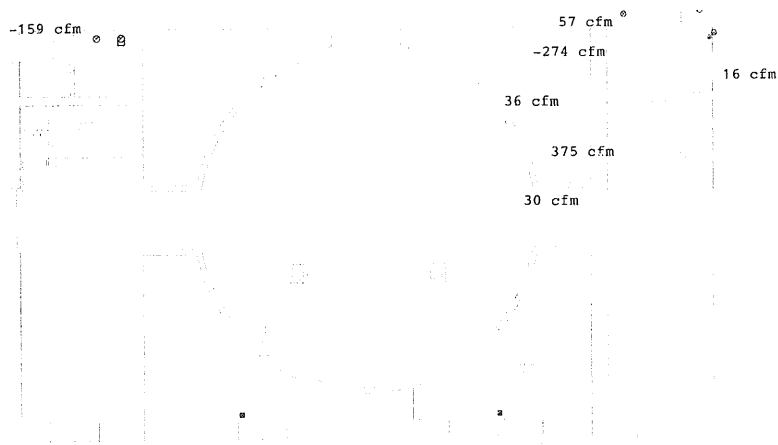


Harriman

STATE OF MAINE  
STATE HOUSE  
HVAC ASSESSMENT

PROJECT NO.

2102



(A) FOURTH FLOOR CENTER EXISTING DUCTWORK PLAN  
NOT TO SCALE

Project No. 2102

PRELIMINARY  
NOT FOR  
CONSTRUCTION

EXISTING CONDITION DRAFT  
REV. 10.2021

Revised By: [Signature]

Revised Date: 10/20/21

Revised Description: [Signature]

Revised Date: 10/20/21

Revised Description: [Signature]

Revised Date: 10/20/21

Revised Description: [Signature]

FOURTH FLOOR CENTER  
EXISTING DUCTWORK

M10-4C

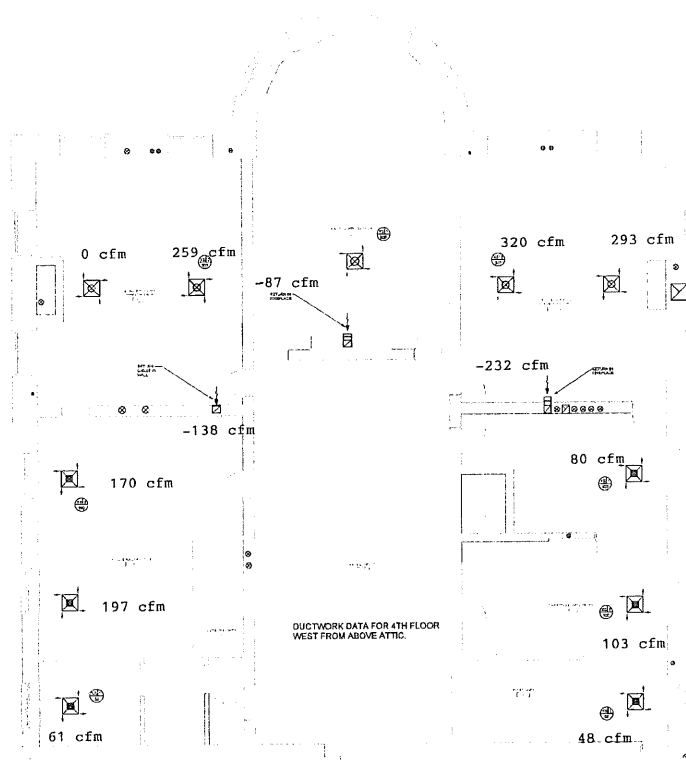




Harriman

STATE OF MAINE  
STATE HOUSE  
HVAC ASSESSMENT

AS OF 12/14/16  
REVISIONS: 1 2 3 4 5 6 7 8 9 10 11 12 13 14 15 16 17 18 19 20 21 22 23 24 25 26 27 28 29 30 31 32 33 34 35 36 37 38 39 40 41 42 43 44 45 46 47 48 49 50 51 52 53 54 55 56 57 58 59 60 61 62 63 64 65 66 67 68 69 70 71 72 73 74 75 76 77 78 79 80 81 82 83 84 85 86 87 88 89 90 91 92 93 94 95 96 97 98 99 100



A1 FOURTH FLOOR WEST WING EXISTING DUCTWORK PLAN  
DATE: 12/14/16

PRELIMINARY  
NOT FOR  
CONSTRUCTION

EXISTING CONDITION DRAFT

NO.	DATE	DESCRIPTION
1	12/14/16	ISSUED FOR REVIEW
2	12/14/16	REVISIONS
3	12/14/16	REVISIONS
4	12/14/16	REVISIONS
5	12/14/16	REVISIONS
6	12/14/16	REVISIONS
7	12/14/16	REVISIONS
8	12/14/16	REVISIONS
9	12/14/16	REVISIONS
10	12/14/16	REVISIONS
11	12/14/16	REVISIONS
12	12/14/16	REVISIONS
13	12/14/16	REVISIONS
14	12/14/16	REVISIONS
15	12/14/16	REVISIONS
16	12/14/16	REVISIONS
17	12/14/16	REVISIONS
18	12/14/16	REVISIONS
19	12/14/16	REVISIONS
20	12/14/16	REVISIONS
21	12/14/16	REVISIONS
22	12/14/16	REVISIONS
23	12/14/16	REVISIONS
24	12/14/16	REVISIONS
25	12/14/16	REVISIONS
26	12/14/16	REVISIONS
27	12/14/16	REVISIONS
28	12/14/16	REVISIONS
29	12/14/16	REVISIONS
30	12/14/16	REVISIONS
31	12/14/16	REVISIONS
32	12/14/16	REVISIONS
33	12/14/16	REVISIONS
34	12/14/16	REVISIONS
35	12/14/16	REVISIONS
36	12/14/16	REVISIONS
37	12/14/16	REVISIONS
38	12/14/16	REVISIONS
39	12/14/16	REVISIONS
40	12/14/16	REVISIONS
41	12/14/16	REVISIONS
42	12/14/16	REVISIONS
43	12/14/16	REVISIONS
44	12/14/16	REVISIONS
45	12/14/16	REVISIONS
46	12/14/16	REVISIONS
47	12/14/16	REVISIONS
48	12/14/16	REVISIONS
49	12/14/16	REVISIONS
50	12/14/16	REVISIONS
51	12/14/16	REVISIONS
52	12/14/16	REVISIONS
53	12/14/16	REVISIONS
54	12/14/16	REVISIONS
55	12/14/16	REVISIONS
56	12/14/16	REVISIONS
57	12/14/16	REVISIONS
58	12/14/16	REVISIONS
59	12/14/16	REVISIONS
60	12/14/16	REVISIONS
61	12/14/16	REVISIONS
62	12/14/16	REVISIONS
63	12/14/16	REVISIONS
64	12/14/16	REVISIONS
65	12/14/16	REVISIONS
66	12/14/16	REVISIONS
67	12/14/16	REVISIONS
68	12/14/16	REVISIONS
69	12/14/16	REVISIONS
70	12/14/16	REVISIONS
71	12/14/16	REVISIONS
72	12/14/16	REVISIONS
73	12/14/16	REVISIONS
74	12/14/16	REVISIONS
75	12/14/16	REVISIONS
76	12/14/16	REVISIONS
77	12/14/16	REVISIONS
78	12/14/16	REVISIONS
79	12/14/16	REVISIONS
80	12/14/16	REVISIONS
81	12/14/16	REVISIONS
82	12/14/16	REVISIONS
83	12/14/16	REVISIONS
84	12/14/16	REVISIONS
85	12/14/16	REVISIONS
86	12/14/16	REVISIONS
87	12/14/16	REVISIONS
88	12/14/16	REVISIONS
89	12/14/16	REVISIONS
90	12/14/16	REVISIONS
91	12/14/16	REVISIONS
92	12/14/16	REVISIONS
93	12/14/16	REVISIONS
94	12/14/16	REVISIONS
95	12/14/16	REVISIONS
96	12/14/16	REVISIONS
97	12/14/16	REVISIONS
98	12/14/16	REVISIONS
99	12/14/16	REVISIONS
100	12/14/16	REVISIONS

FOURTH FLOOR WEST  
WING EXISTING  
DUCTWORK

M10-4W

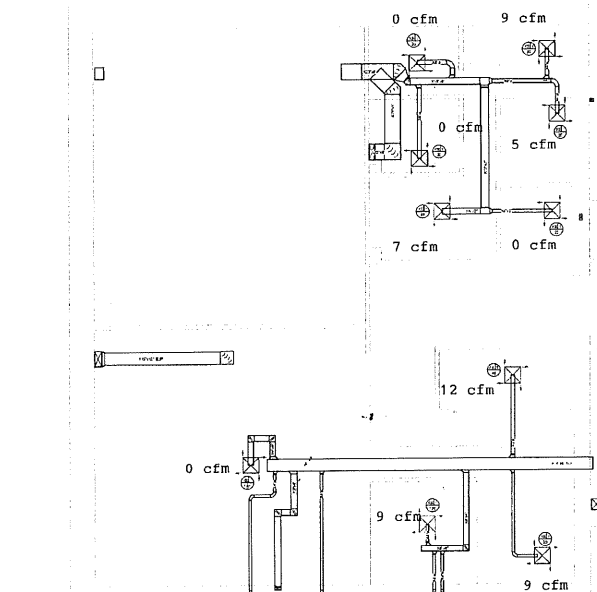




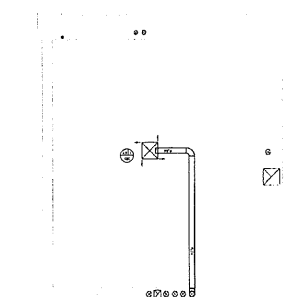
Harriman

STATE OF MAINE  
STATE HOUSE  
HVAC ASSESSMENT

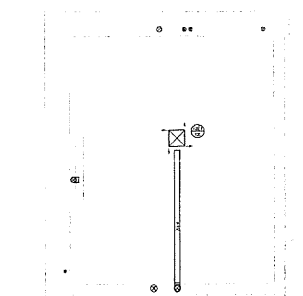
DATE: 10/10/18  
BY: [Signature]  
CHECKED: [Signature]



(A1) THIRD FLOOR NORTH MEZZANINE EXISTING DUCTWORK PLAN  
DATE: 10/10/18



(B2) THIRD FLOOR WEST MEZZANINE EXISTING DUCTWORK PLAN  
DATE: 10/10/18



(A2) THIRD FLOOR WEST MEZZANINE EXISTING DUCTWORK PLAN  
DATE: 10/10/18

PRELIMINARY  
NOT FOR  
CONSTRUCTION

EXISTING CONDITION DRAFT

DATE: 10/10/18

BY: [Signature]

CHECKED: [Signature]

DATE: 10/10/18

THIRD FLOOR MEZZANINE  
EXISTING DUCTWORK

M40-1

**MAINE STATE HOUSE**

HVAC STUDY  
SOLUTION #1 ESTIMATE  
December 1, 2025



AREA	SCOPE OF WORK	QUANTITY	COST/UNIT	TOTAL	NOTES
<b>SOLUTION #1</b>		<i>95,000</i>	<i>SF</i>		
	<b>Finishes</b>				
	Misc cutting & patching (MHR)	496	\$180.00	\$89,280	
	<b>Mechanical</b>				
	Clean coils and replace filters at ERVs (EA)	11	\$1,900.00	\$20,900	
	Replace VFD at AHU-3 (EA)	1	\$7,320.00	\$7,320	
	Allowance for duct modifications (ALLW)	1	\$15,000.00	\$15,000	
	Inspect and seal all existing ductwork (LF)	3,500	\$55.00	\$192,500	
	Add duct sleeves to chimney ducts (LF)	1,515	\$85.00	\$128,775	
	Air leakage test (LS)	1	\$10,000.00	\$10,000	
	Rebalance system (SF)	95,000	\$0.75	\$71,250	
	<i>GC's, Fee, Contingency</i>	<i>46%</i>		<i>\$246,112</i>	
<b>TOTAL CONSTRUCTION COST</b>				<b>\$781,137</b>	

\*Total costs include the following add-ons: Contingency 20%, GC's 15%, OH&P 5%, Escalation 4%, Bond & Insurance 2%



**MAINE STATE HOUSE**

HVAC STUDY  
SOLUTION #2 ESTIMATE  
December 1, 2025



AREA	SCOPE OF WORK	QUANTITY	COST/UNIT	TOTAL	NOTES
SOLUTION #2		95,000	SF		
	Demolition				
	Asbestos testing & remediation at all drops (ALLW)	1	\$150,000.00	\$150,000	
	Finishes				
	Misc cutting & patching (MHR)	800	\$180.00	\$144,000	
	Mechanical				
	Remove existing ductwork (MHR)	400	\$165.00	\$66,000	
	Clean coils and replace filters at ERVs (EA)	11	\$1,900.00	\$20,900	
	Replace VFD at AHU-3 (EA)	1	\$7,320.00	\$7,320	
	New ductwork & insulation throughout (LBS)	47,500	\$28.00	\$1,330,000	Assume .5 lbs/sf
	Rebalance system (SF)	95,000	\$0.75	\$71,250	
	GC's, Fee, Contingency	46%		\$823,156	
<b>TOTAL CONSTRUCTION COST</b>				<b>\$2,612,626</b>	
*Total costs include the following add-ons: Contingency 20%, GC's 15%, OH&P 5%, Escalation 4%, Bond & Insurance 2%					

## **Radon in Air Testing**

**Building Name:** Maine State House  
**Building Address:** 210 State Street  
Augusta, Maine 04333  
**Report Issue Date:** March 5, 2024

**Prepared by**  
**Brent Goodwin**  
**Goodwin Environmental Testing Inc**

## Introduction

Radon is a naturally occurring radioactive gas that is a part of the uranium-238 decay chain. Radon comes from the breakdown (radioactive decay) of uranium that is found in soil and rock all over the world. Radon is a component of the air in soil that enters the building through cracks and other pathways in the foundation. Eventually, it decays into radioactive particles (decay products) that can become trapped in your lungs when you inhale. As these particles decay, they release small bursts of radiation that can damage lung tissue and lead to lung cancer over the course of a lifetime.

Radon is the leading cause of lung cancer among nonsmokers and the second leading cause of lung cancer in the general population. For most school children and working adults, the second largest contributor to their radon exposure is likely to be their school or place of work, needlessly exposing hundreds of thousands of students and working adults to this serious health risk.

Radon in U.S. homes causes approximately 21,000 U.S. lung cancer deaths each year. Whether at home, work, or school, an individual's exposure to radon gas combines over time to increase the risk of preventable lung cancer.

In the State of Maine, it is estimated that there are about 165 deaths per year due to radon. The USEPA and State of Maine action limit is 4.0 pCi/L for radon in air.

Radon gas is colorless, odorless and tasteless. The only way to know whether elevated concentrations of radon are present in any building is to test.

Goodwin Environmental Testing Inc performed a follow-up short-term radon in air test beginning on February 16, 2024 and ending on February 20, 2024 using activated charcoal canisters. This follow-up testing involved retesting the first floor of the Maine State House (State House) and sampling a few locations on the first floor of the Cross State Office Building (CSOB) and in the tunnel.

## Test Results

- The team placed 28 activated charcoal detectors and six quality control detectors for a total of 34 in the State House, the CSOB, and the tunnel and left them in place over a five-day period.
- There were 18 results at or above the U. S. Environmental Protection Agency (USEPA) and State of Maine action limit of 4.0 pCi/L for radon in air. sixteen were on the first floor of the State House and two were in the tunnel.
- The highest result on the first floor in the State House was 19.3 pCi/L, sample 115589, which was in entrance area.
- The highest result in the tunnel was 35.7 pCi/L, sample 115375, which was in the middle of the tunnel by the animal displays.
- The highest result in the CSOB was 1.9 pCi/L, sample 115371, which was in the hallway by room 105.
- The overall results of the State House were about the same as the testing completed in December 2023.
- The West and South Wings, and the original State House had results significantly above the 4.0. pCi/L action limit on the first floor.
- The North Wing had levels slightly above the action limit on the first floor.
- There was no evidence of test interference.
- There were no unusual events or anomalies noted during the testing period.
- Quality control results indicate that the execution of the testing and analysis of the detectors were within acceptable criteria. There was one blank that was higher than expected with a result of 1.6 pCi/L

See Appendix A, Complete Results for Radon Test, for results and sample locations.

## Conclusions

On February 16, 2024, 34 detectors including three duplicates, one field blank and two office/travels blanks were deployed throughout the building and were retrieved on February 20, 2024. Detectors were submitted to NEL for analysis.

The radon levels in the State House building are above the USEPA and State of Maine action limit of 4.0 pCi/L for radon in air, with 16 of 22 locations on the first floor above the action limit.

The variation in results among Wings within a large building like the State House are not usual however the variation within a Wing is not expected. Understanding why this variation exist may help with retesting and mitigation.

The high results in the tunnel maybe a source for the high readings in the entrance of the State House as it appears that the air flows from the tunnel into the entry way. However, rooms 131 and 133 are low. These rooms may keep the doors closed limiting the air flow in from the tunnel and or these rooms may get makeup air from another source.

The 1.9 pCi/L in the CSOB indicates that the building maybe OK, but further testing is required. There was no evidence of test interference.

There were no unusual events or anomalies i.e., such as a window being open at the start of the test.

Spikes were not sent to Bowser-Morner as the State of Maine Radon Department allowed Goodwin Environmental Testing Inc to eliminate the need for spikes because there were only two required by the MALB 2014 and the samples were analyzed by a State of Maine licensed laboratory that does monthly spikes.

## Recommendations

Goodwin Environmental Testing Inc has the following recommendations:

1. Review building air flow and structural differences within State House Wings, the CSOB, the tunnel. Based on the result of the review chose the best path forward listed below;
  - A. Test the CSOB before making air flow adjustment or mitigating the tunnel and or the State House as these types of changes may impact the air flow in the CSOB.
  - B. Investigate the air supply for rooms 131 and 133. And possibly rooms 126 and 102 as these rooms have tested below the radon action limits in both rounds of testing.
  - C. Mitigate the building then retest.
  - D. Mitigate the West and South Wings, and the original State House and retest North Wing if the air flow was adjusted.

## Test procedure

Goodwin Environmental Testing Inc personnel were accompanied by Nick Ferrala, Occupational Health and Safety Compliance Coordinator and Nathan Maurais, Facilities Manager, Maine State Legislature during sample placement on Friday, February 16, 2024.

Nathan Maurais, Facilities Manager, Maine State Legislature accompanied Goodwin Environmental Testing Inc personnel on Tuesday, February 16, 2024 during sample retrieval.

Goodwin Environmental Testing Inc followed "The Protocol for Conducting Measurements of Radon and Radon Decay Products in Schools and Large Buildings" (MALB-2014) for conducting the radon in air testing. MALB 2014 requires conducting a measurement in each ground-contact room, office and other frequently occupied areas such as those used as conference. This means each room, or area that has floor(s) and/or wall(s) in contact with the ground or is over crawlspaces, utility tunnels or parking garages. Also, conduct a measurement in ground-contact rooms or areas (E.G. utility rooms, storage rooms, and maintenance rooms that are occupiable with little or no modification; or have air communication with occupiable areas by way of stairwells, elevator shafts, or other unoccupied locations that may serve as a pathway for radon into occupied spaces on upper floors.

Short term radon testing requires that the testing be done over a minimum of a 48-hour period and specifically, testing was performed under Normal Occupied Operating Condition.

All windows and external doors were closed 12 hours before and during the entire test period (except for normal entering and exiting and no doors were propped open).

Generally, before placing the detector, the area was examined for the "best" location. Detectors were placed at least 20 inches above the floor and not higher than six to eight feet, three feet away from windows, and 12 inches from exterior walls, where possible.

Quality control samples were placed.

All rooms on first floor that were sampled in the first round of tests were sampled again. Floor plans for sampled rooms and approximate location within the room are on file in Executive Director's office and are not included in the report.

Test detectors were retrieved approximately 96 hours after placing them.

Samples were delivered with Chain of Custody (COC) forms to Northeast Laboratory Services (NEL) on Tuesday evening to ensure that samples were analyzed as soon as possible i.e., within 4 days of collection due to the radioactive decay of Radon.

NEL utilizes liquid scintillation in the analysis of radon air samples. This method is based on counting the number of flashes of light produced by the radioactive decay of radon. Radon emits particles of energy when decaying. These particles react with scintillation analyzer and read as counts per minute. By knowing the decay rate of radon, one can derive the total activity in pCi/L from the counts per minute. Known standards of H3 and C14 are used to calibrate the instrument.

Goodwin Environmental Testing Inc placed 28 activated charcoal detectors and six quality control detectors in the State House, the CSOB, and the tunnel over a five-day period. Goodwin Environmental Testing Inc and NEL are State of Maine licensed Specialist Companies. See Appendix B, Credentials, for copies of company and employee credentials.

## Quality Control

Quality control is the system of activities to ensure a quality product, including measurements made to ensure and monitor data quality.

Each detector was identified with a unique number (a serial number for each activated charcoal kit is provided by the manufacturer) and stored in a low radon/radioactive background and in accordance with the manufacturer's instructions and recommendations. Prior to deployment each detector was checked for damage and logged on a COC form. See Appendix C COC for working COCs.

This testing project involved 40 tests. Based on the MALB 2014 guidance, the projects required 10 % duplicate measurements, 5% blank measurements, and 3% spiked measurements. Duplicate measurements (Duplicates) are pairs of detectors deployed in the same location to evaluate precision. Blank measurements (Blanks) are integrating detectors that are intentionally not exposed for sampling. Blanks help evaluate radon exposure from other sources such as during shipping, storage and analysis. The test guidance also recommends doing spiked measurements for each test site. Spiked measurements (Spikes) are detectors that have been exposed in an approved chamber (Bowser-Morner) to a known concentration of radon. Spikes can help evaluate the accuracy of a laboratory analysis. Spikes were not sent to Bowser-Morner as the State of Maine Radon Department allowed Goodwin Environmental Testing Inc to eliminate the need for spikes because there were only two required by the MALB 2014 and the samples were analyzed by a State licensed laboratory that does monthly spikes.

### Duplicates

The precision of the measurement method is evaluated by use of duplicate measurements. Duplicates are measurements made with identical devices, that readout in the same units, and over identical time periods. Passive duplicates (test kits) are made by selecting any pair of the detectors at random and exposing them at the same location side-by-side (about 4 inches apart).

The results of duplicates are analyzed and the precision criteria is based on the relative percent difference (RPD). RPD is defined as the absolute difference between duplicates divided by their mean times 100.

$$RPD = \text{Absolute value } \{(\text{test \#1 minus test \#2}) / \text{Average of both tests}\} \text{ times } 100$$

Results duplicate RPD are listed in Table 1 below.

Table 1 Results of duplicate RPD

Duplicate 1 Sample #	Duplicate 2 Sample #	Duplicate 1 Result (pCi/L)	Duplicate 2 Result (pCi/L)	RPD %	Room Number
115374-D	115375-D	30.6	35.7	7.7	Middle of tunnel
115383-D	115384-D	3.5	2.8	22.2	126
115395-D	115396-D	5.0	5.3	5.8	108

All three duplicate pairs passed RPD criteria listed below. Samples in room 126 are less than 4 pCi/L and have RPDs less than 67%. Samples in the tunnel and room 108 are over 4 pCi/L and have a RPD of less than 36%.

The RPD is acceptable between duplicates if:

- less than 67% for duplicate exposures of less than 4 pCi/L, or
- less than 36 % for duplicate exposures of 4 pCi/L or greater.

### Measurement Blanks

Field blanks are made by analyzing unexposed (closed) detectors that are placed side-by-side with an exposed detector in the field. The purpose of field background measurements is to assess any change in analysis result caused by exposure at the testing site. Background levels may be due to leakage of radon into the detector, detector response to gamma radiation, or other causes.

Travel blanks and office blanks are also used to assess exposure during shipment to and from the test site and/or storage in the home office.

The results of the background measurements (blanks) should be at the Laboratory's lower level of detection (LLD) of <0.30 pCi/L. It is not unusual to have results higher than the LLD, but these results should not exceed 0.70 pCi/L.

Results of blank analysis are listed below in Table 2.

Table 2. Results of Blank Analysis

Blank Sample #	Result pCi/L	Room Number
115386-B	1.4	123
115590	<0.30	Travel
115591	<0.30	Office

Blank 115386-B placed in room 123 had a result of 1.4 pCi/L which exceeds the 0.70 pCi/L criterion. Both Goodwin Environmental Testing Inc and Northeast Laboratory Services reviewed handling, transporting, analysis, and calculations related to sample 115386-B and did not find an assignable cause for the high result. While this result is above acceptance criterion, it is not believed to have an impact in the testing.

The travel and office blanks are below the 0.70 pCi/L criterion.

### Spikes Measurements

All spiked detectors must be handled in the same manner as ordinary measurements to preclude special processing, and thereby serve as an internal check on the measurement system. Spiked measurements consist of detectors that have been exposed to known concentrations in a NRPP approved radon calibration chamber. NEL uses Bowser-Morner for measurements of bias. Bowser-Morner provides Chain of Custody forms.

Detectors are exposed in the radon calibration chamber to ensure that the measurement system is working with acceptable criteria. The Relative percent error (RPE) is calculated as the difference between the measured and the reference value divided by the reference value.

$$\text{RPE} = (\text{reference value} - \text{measured value}) / \text{reference value} \times 100$$

The RPE, expressed as percent, is the individual bias value. Several sets of bias values are needed to be confident that a bias is present

- The accuracy objective is individual RPE results of  $\leq 25\%$ ,
- and 75% of the spikes in a group of spikes need to meet the RPE  $\leq 25\%$  requirement.

### Definitions

See Appendix D Definition of Terms for more detailed definitions.



## **Appendices**

- A. Complete Results for Radon Test**
- B. Credentials**
- C. Chain of Custody Forms**
- D. Definitions of Terms**

Appendix A  
Complete Results for Radon Test



P.O. BOX 788  
Waterville, Maine 04903-0788  
120 Main Street  
Westbrook, Maine 04092

## Certificate of Analysis

Administrative Offices  
Phone: 207-873-7711  
Fax: 207-873-7022

Customer Service  
Phone: 207-878-8481  
Fax: 207-887-8387

### Radon Air Report

Report Date: 2/23/2024

Attention: Brent Goodwin  
Goodwin Environmental Testing Inc  
17 Kathryn Ln  
Bangor, ME 04401

#### Legend

- ☑ Below EPA Action Level (4.0 pCi/L)
- ☒ At EPA Action Level or Above (4.0 pCi/L)

Location: State of Maine  
210 State St  
Augusta ME 04333

Lab ID Number	Building Name/Area	Unit	Test Area	Temp (°F)	Start Date/Time	End Date/Time	Radon in Air (pCi/L)
602400379	CSOB - Vending Machine		1st Floor: 115370	70	2/16/2024 16:24	2/20/2024 16:18	☑ Detector 1: 0.9
602400380	CSOB - Hallway by Rm 105		1st Floor: 115371	70	2/16/2024 16:28	2/20/2024 16:19	☑ Detector 1: 1.9
602400381	CSOB - By Elevator		1st Floor: 115372	70	2/16/2024 16:30	2/20/2024 16:21	☑ Detector 1: 0.6
602400382	CSOB - By Staircase		1st Floor: 115373	70	2/16/2024 16:32	2/20/2024 16:21	☑ Detector 1: 0.9
602400383	Tunnel - Middle		Tunnel: 115374-D	70	2/16/2024 16:34	2/20/2024 16:23	☒ Detector 1: 30.6
602400384	Tunnel - Middle		Tunnel: 115375-D	70	2/16/2024 16:34	2/20/2024 16:23	☒ Detector 1: 35.7
602400385	Tunnel - By State House		Tunnel: 115376	70	2/16/2024 16:36	2/20/2024 16:24	☒ Detector 1: 21.4
602400386	State House - Cafe	133	1st Floor: 115377	70	2/16/2024 16:40	2/20/2024 16:32	☒ Detector 1: 19.0
602400387	State House	131	1st Floor: 115378	70	2/16/2024 16:42	2/20/2024 16:34	☑ Detector 1: 1.5
602400388	State House	132	1st Floor: 115379	70	2/16/2024 16:44	2/20/2024 16:33	☑ Detector 1: 1.5
602400389	State House - Welcome Room	130	1st Floor: 115380	70	2/16/2024 16:45	2/20/2024 16:33	☒ Detector 1: 15.4
602400390	State House	120	1st Floor: 115381	70	2/16/2024 16:47	2/20/2024 16:35	☑ Detector 1: 3.1
602400391	State House	122	1st Floor: 115382	70	2/16/2024 16:48	2/20/2024 16:36	☒ Detector 1: 11.1
602400392	State House	126	1st Floor: 115383-D	72	2/16/2024 16:49	2/20/2024 16:36	☑ Detector 1: 3.5
602400393	State House	126	1st Floor: 115384-D	72	2/16/2024 16:49	2/20/2024 16:36	☑ Detector 1: 2.8
602400394	State House	127	1st Floor: 115385	70	2/16/2024 16:51	2/20/2024 16:38	☒ Detector 1: 8.3
602400395	State House	123	1st Floor: 115386-B	70	2/16/2024 16:52	2/20/2024 16:48	☑ Detector 1: 1.4

Goodwin Environmental Testing Inc  
602400395, 2024 Rev 0

Page 1 of 3



P.O. BOX 788  
Waterville, Maine 04903-0788  
120 Main Street  
Westbrook, Maine 04092

## Certificate of Analysis

Administrative Offices  
Phone: 207-873-7711  
Fax: 207-873-7022

Customer Service  
Phone: 207-878-6481  
Fax: 207-887-8387

### Radon Air Report

Report Date: 2/23/2024

Attention: Brent Goodwin  
Goodwin Environmental Testing Inc  
17 Kathryn Ln  
Bangor, ME 04401

Legend  
☑ Below EPA Action Level (4.0 pCi/L)  
✗ At EPA Action Level or Above (4.0 pCi/L)

Location: State of Maine  
210 State St  
Augusta ME 04333

Lab ID Number	Building Name/Area	Unit	Test Area	Temp (°F)	Start Date/Time	End Date/Time	Radon in Air (pCi/L)
602400396	State House	123	1st Floor: 115387-B	70	2/16/2024 16:52	2/20/2024 16:48	✗ Detector 1: 12.2
602400397	State House	121	1st Floor: 115388	70	2/16/2024 16:55	2/20/2024 16:38	☑ Detector 1: 2.9
602400398	State House	119	1st Floor: 115389	70	2/16/2024 16:56	2/20/2024 16:39	✗ Detector 1: 4.0
602400399	State House	117	1st Floor: 115390	70	2/16/2024 16:56	2/20/2024 16:40	✗ Detector 1: 11.2
602400400	State House	105	1st Floor: 115391	72	2/16/2024 16:58	2/20/2024 16:41	✗ Detector 1: 4.6
602400401	State House	103	1st Floor: 115392	72	2/16/2024 16:59	2/20/2024 16:41	✗ Detector 1: 6.9
602400402	State House	107	1st Floor: 115393	70	2/16/2024 17:00	2/20/2024 16:43	✗ Detector 1: 5.8
602400403	State House	109	1st Floor: 115394	70	2/16/2024 17:02	2/20/2024 16:44	✗ Detector 1: 5.9
602400404	State House	108	1st Floor: 115395-D	70	2/16/2024 17:04	2/20/2024 16:44	✗ Detector 1: 5.0
602400405	State House	108	1st Floor: 115396-D	70	2/16/2024 17:04	2/20/2024 16:44	✗ Detector 1: 5.3
602400406	State House	106	1st Floor: 115397	70	2/16/2024 17:05	2/20/2024 16:45	✗ Detector 1: 4.8
602400407	State House	102	1st Floor: 115398	70	2/16/2024 17:06	2/20/2024 16:45	☑ Detector 1: 3.1
602400408	State House - Elevator		1st Floor: 115399	70	2/16/2024 17:09	2/20/2024 16:46	✗ Detector 1: 7.7
602400409	State House - Corridor		1st Floor: 115588	70	2/16/2024 17:10	2/20/2024 16:49	✗ Detector 1: 14.4
602400410	State House - Entrance		1st Floor: 115589	70	2/16/2024 17:11	2/20/2024 16:50	✗ Detector 1: 19.3
602400411	State House		Office Bk: 115590	70	2/16/2024 17:11	2/20/2024 16:50	☑ Detector 1: <0.30
602400412	State House		Travel Bk: 115591	70	2/16/2024 17:11	2/20/2024 16:50	☑ Detector 1: <0.30



P.O. BOX 788  
Waterville, Maine 04903-0788  
120 Main Street  
Westbrook, Maine 04092

Administrative Offices  
Phone: 207-873-7711  
Fax: 207-873-7022

Customer Service  
Phone: 207-878-6481  
Fax: 207-887-8387

## Certificate of Analysis

### Radon Air Report

Report Date: 2/23/2024

Attention: Brent Goodwin  
Goodwin Environmental Testing Inc  
17 Kathryn Ln  
Bangor, ME 04401

#### Legend

- ☒ Below EPA Action Level (4.0 pCi/L)
- ☒ At EPA Action Level or Above (4.0 pCi/L)

Location: State of Maine  
210 State St  
Augusta ME 04333

Lab ID Number	Building Name/Area	Unit	Test Area	Temp (°F)	Start Date/Time	End Date/Time	Radon in Air (pCi/L)
---------------	--------------------	------	-----------	-----------	-----------------	---------------	----------------------

Radon measurements with a reading of 4pCi/L or more are at the EPA action level. The EPA recommends follow up measurements and fixing a home with levels of 4pCi/L or higher. The State of Maine considers levels of 2pCi/L or lower desirable, but does not necessarily recommend action unless over 4pCi/L.

Information on indoor radon, and any questions, comments, or complaints concerning radon services should be directed to the State of Maine Radiation Control Program, State House #10, Augusta, ME 04333-0010, 287-5676 or 1-800-232-0842.

Should you have any questions concerning your radon test result, please feel free to call us.

Please, contact NEL for your other environmental analytical needs, including water testing for lead and arsenic or indoor air quality.

Authorized By

*Adam Weber*  
Adam Weber, Laboratory Analyst

Review Date

2/23/2024

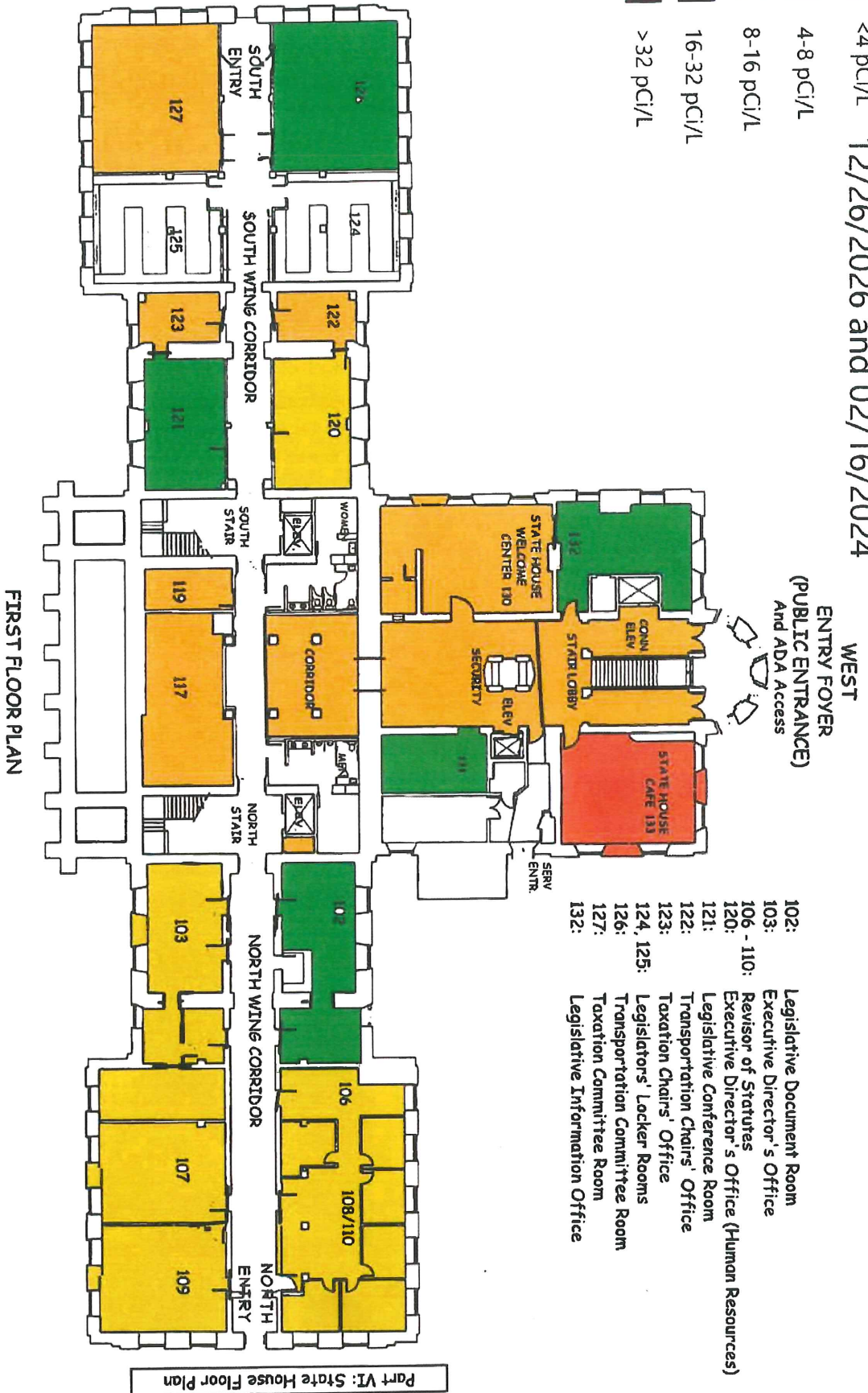
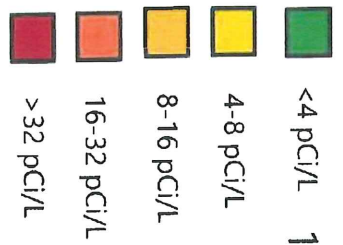
Note: NEL meets EPA requirements for radon testing. The State of Maine Radon Registration Act (22 MRSA sec. 771 et seq.) requires this laboratory to report the test results and zip codes of structures tested, and the street address in cases of very high radon levels.

Analytical results and reports are generated by NEL at the request of and for the exclusive use of the person or entity (client) named on this report. Results, reports or copies of same will not be released by NEL to any third party without the prior express written consent from the client named in this report. This report applies only to those samples taken at the time, place, and location referenced by the client. This report makes no express or implied warranty or guarantee as to the sampling methodology used by the individual performing the sampling. The client is solely responsible for the use and interpretation of these results and NEL makes no express or implied warranties as to such use or interpretation. NEL is not able to make and does not make a determination as to the environmental soundness, safety, or health of a property from only the samples sent to their laboratory for analysis. Unless otherwise specified by the Client, NEL reserves the right to dispose of all samples after the testing of such samples is sufficiently completed. NEL liability extends only to the cost of the testing. NRSB Regd ARL1401, ME REG# SPC3.

Goodwin Environmental Testing Inc  
March 5, 2024 Rev 0  
602400519

Page 3 of 3

# Radon Levels, Average 12/26/2026 and 02/16/2024



Part VI: State House Floor Plan

## Radon in Air Testing

**Building Name:** Maine State House  
**Building Address:** 210 State Street  
Augusta, Maine 04333  
**Report Issue Date:** August 28, 2024

Post ERV

**Prepared by**  
**Brent Goodwin**  
**Goodwin Environmental Testing Inc**

## Introduction

Radon is a naturally occurring radioactive gas that is a part of the uranium-238 decay chain. Radon comes from the breakdown (radioactive decay) of uranium that is found in soil and rock all over the world. Radon is a component of the air in soil that enters the building through cracks and other pathways in the foundation. Eventually, it decays into radioactive particles (decay products) that can become trapped in your lungs when you inhale. As these particles decay, they release small bursts of radiation that can damage lung tissue and lead to lung cancer over the course of a lifetime.

Radon is the leading cause of lung cancer among nonsmokers and the second leading cause of lung cancer in the general population. For most school children and working adults, the second largest contributor to their radon exposure is likely to be their school or place of work, needlessly exposing hundreds of thousands of students and working adults to this serious health risk.

Radon in U.S. homes causes approximately 21,000 U.S. lung cancer deaths each year. Whether at home, work, or school, an individual's exposure to radon gas combines over time to increase the risk of preventable lung cancer.

In the State of Maine, it is estimated that there are about 165 deaths per year due to radon. The USEPA and State of Maine action limit is 4.0 pCi/L for radon in air.

Radon gas is colorless, odorless and tasteless. The only way to know whether elevated concentrations of radon are present in any building is to test.

Goodwin Environmental Testing Inc performed a follow-up short-term radon in air test beginning on August 6, 2023 and ending on August 8, 2023 using activated charcoal canisters. This follow-up testing involved retesting the first floor of the Maine State House (State House), testing by the elevator on the second floor and sampling the boiler room in the Cross State Office Building (CSOB) and in the tunnel.

## Test Results

- The team placed 25 activated charcoal detectors and five quality control detectors for a total of 30 in the State House, the CSOB, and the tunnel and left them in place over a three-day period.
- There was one result at or above the U. S. Environmental Protection Agency (USEPA) and State of Maine action limit of 4.0 pCi/L for radon in air.
- Room 117 in the State House was the only high reading. The result in Room 117 was 4.5 pCi/L, sample 047102.
- The result in the tunnel was 3.3 pCi/L, sample 047106, which was in the middle of the tunnel by the animal displays.
- The result in the CSOB boiler room office was 0.7 pCi/L, sample 047107.
- The overall results of the State House were much improved compared to the earlier testing completed in December 2023 and February 2024.
- There was no evidence of test interference.
- There were no unusual events or anomalies noted during the testing period.
- Quality control results indicate that the execution of the testing and analysis of the detectors were within acceptable criteria. There was one blank that was higher than expected with a result of 0.8 pCi/L.

See Appendix A, Complete Results for Radon Test, for results and sample locations.



## Conclusions

On August 6, 2023, 30 detectors including two duplicates, one field blank and two office/travels blanks were deployed throughout the State House, Tunnel, and CSOB and were retrieved on August 8, 2023. Detectors were submitted to NEL for analysis.

It appears that the new air handling units are working to reduce the radon levels in the State House. The radon levels in the State House are below the USEPA and State of Maine action limit of 4.0 pCi/L for radon in air, except in the room 117.

The radon level in the tunnel decreased to 3.3 pCi/L from 30.6 and 35.7 pCi/L.

The radon level in the boiler room office was 0.7 pCi/L verifying that the air flow changes made to the boiler room office air flow continue to keep the radon level below 4.0 pCi/L.

There was no evidence of test interference.

There were no unusual events or anomalies i.e., such as a window being open at the start of the test.

Spikes were not sent to Bowser-Morner as the State of Maine Radon Department allowed Goodwin Environmental Testing Inc to eliminate the need for spikes because there were only two required by the MALB 2014 and the samples were analyzed by a State of Maine licensed laboratory that does monthly spikes.

## Recommendations

Goodwin Environmental Testing Inc has the following recommendations:

1. Review building air flow in room 117 and increase it with existing air handling unit and or add the new air flow unit as these units appear to working in the rest of the State House for reducing the radon levels.

## Test procedure

Goodwin Environmental Testing Inc personnel were accompanied by Nick Ferrala, Occupational Health and Safety Compliance Coordinator and Nathan Maurais, Facilities Manager, Maine State Legislature during sample placement on Tuesday August 6, 2024.

Nathan Maurais, Facilities Manager, Maine State Legislature accompanied Goodwin Environmental Testing Inc personnel on Thursday August 8, 2024 during sample retrieval.

Goodwin Environmental Testing Inc followed "The Protocol for Conducting Measurements of Radon and Radon Decay Products in Schools and Large Buildings" (MALB-2014) for conducting the radon in air testing. MALB 2014 requires conducting a measurement in each ground-contact room, office and other frequently occupied areas such as those used as conference. This means each room, or area that has floor(s) and/or wall(s) in contact with the ground or is over crawlspaces, utility tunnels or parking garages. Also, conduct a measurement in ground-contact rooms or areas (E.G. utility rooms, storage rooms, and maintenance rooms that are occupiable with little or no modification; or have air communication with occupiable areas by way of stairwells, elevator shafts, or other unoccupied locations that may serve as a pathway for radon into occupied spaces on upper floors.

Short term radon testing requires that the testing be done over a minimum of a 48-hour period and specifically, testing was performed under Normal Occupied Operating Condition.

All windows and external doors were closed 12 hours before and during the entire test period (except for normal entering and exiting and no doors were propped open).

Generally, the detectors were placed in the same location as in the previous test locations. Detectors were at least 20 inches above the floor and not higher than six to eight feet, three feet away from windows, and 12 inches from exterior walls, where possible.

Quality control samples were placed.

All rooms on first floor that were sampled in the first and second round of tests were sampled again as well as the tunnel and the boiler room in the CSOB. Floor plans for sampled rooms and approximate location within the room are on file in Executive Director's office and are not included in the report.

Test detectors were retrieved approximately 48 hours after placing them.

Samples were delivered with Chain of Custody (COC) forms to Northeast Laboratory Services (NEL) on Thursday evening to ensure that samples were analyzed as soon as possible i.e., within 4 days of collection due to the radioactive decay of Radon.

NEL utilizes liquid scintillation in the analysis of radon air samples. This method is based on counting the number of flashes of light produced by the radioactive decay of radon. Radon emits particles of energy when decaying. These particles react with scintillation analyzer and read as counts per minute. By knowing the decay rate of radon, one can derive the total activity in pCi/L from the counts per minute. Known standards of H3 and C14 are used to calibrate the instrument.

Goodwin Environmental Testing Inc placed 25 activated charcoal detectors and five quality control detectors in the State House, the CSOB, and the tunnel over a three-day period. Goodwin Environmental Testing Inc and NEL are State of Maine licensed Specialist Companies. See Appendix B, Credentials, for copies of company and employee credentials.

## Quality Control

Quality control is the system of activities to ensure a quality product, including measurements made to ensure and monitor data quality.

Each detector was identified with a unique number (a serial number for each activated charcoal kit is provided by the manufacturer) and stored in a low radon/radioactive background and in accordance with the manufacturer's instructions and recommendations. Prior to deployment each detector was checked for damage and logged on a COC form. See Appendix C COC for working COCs.

This testing project involved 25 tests. Based on the MALB 2014 guidance, the projects required 10 % duplicate measurements, 5% blank measurements, and 3% spiked measurements. Duplicate measurements (Duplicates) are pairs of detectors deployed in the same location to evaluate precision. Blank measurements (Blanks) are integrating detectors that are intentionally not exposed for sampling. Blanks help evaluate radon exposure from other sources such as during shipping, storage and analysis. The test guidance also recommends doing spiked measurements for each test site. Spiked measurements (Spikes) are detectors that have been exposed in an approved chamber (Bowser-Morner) to a known concentration of radon. Spikes can help evaluate the accuracy of a laboratory analysis. Spikes were not sent to Bowser-Morner as the State of Maine Radon Department allowed Goodwin Environmental Testing Inc to eliminate the need for spikes because there were only two required by the MALB 2014 and the samples were analyzed by a State licensed laboratory that does monthly spikes.

### Duplicates

The precision of the measurement method is evaluated by use of duplicate measurements. Duplicates are measurements made with identical devices, that readout in the same units, and over identical time periods. Passive duplicates (test kits) are made by selecting any pair of the detectors at random and exposing them at the same location side-by-side (about 4 inches apart).

The results of duplicates are analyzed and the precision criteria is based on the relative percent difference (RPD). RPD is defined as the absolute difference between duplicates divided by their mean times 100.

$$RPD = \text{Absolute value } \{(\text{test \#1 minus test \#2}) / \text{Average of both tests}\} \text{ times } 100$$

Results duplicate RPD are listed in Table 1 below.

Table 1 Results of duplicate RPD

Duplicate 1 Sample #	Duplicate 2 Sample #	Duplicate 1 Result (pCi/L)	Duplicate 2 Result (pCi/L)	RPD %	Room Number
047086	047087	0.5	0.7	33.3	108
047097	047098	1.0	1.0	0	126

The duplicate pairs passed RPD criteria listed below. Samples in rooms 108 and 126 are less than 4 pCi/L and have RPDs less than 67%.

The RPD is acceptable between duplicates if:

- less than 67% for duplicate exposures of less than 4 pCi/L, or
- less than 36 % for duplicate exposures of 4 pCi/L or greater.

### Measurement Blanks

Field blanks are made by analyzing unexposed (closed) detectors that are placed side-by-side with an exposed detector in the field. The purpose of field background measurements is to assess any change in analysis result caused by exposure at the testing site. Background levels may be due to leakage of radon into the detector, detector response to gamma radiation, or other causes.

Travel blanks and office blanks are also used to assess exposure during shipment to and from the test site and/or storage in the home office.

The results of the background measurements (blanks) should be at the Laboratory's lower level of detection (LLD) of <0.30 pCi/L. It is not unusual to have results higher than the LLD, but these results should not exceed 0.70 pCi/L.

Results of blank analysis are listed below in Table 2.

Table 2. Results of Blank Analysis

Blank Sample #	Result pCi/L	Room Number
047090	0.5	123
047108	0.8	Travel
047109	0.6	Office

Travel blank 047108 had a result of 0.8 pCi/L which exceeds the 0.7 pCi/L criterion. Both Goodwin Environmental Testing Inc and Northeast Laboratory Services reviewed handling, transporting, analysis, and calculations related to sample 047108 and did not find an assignable cause for the high result. While this result is above acceptance criterion, it is not believed to have an impact in the testing.

Room 123 and office blanks are below the 0.70 pCi/L criterion.

### Spikes Measurements

All spiked detectors must be handled in the same manner as ordinary measurements to preclude special processing, and thereby serve as an internal check on the measurement system. Spiked measurements consist of detectors that have been exposed to known concentrations in a NRPP approved radon calibration chamber. NEL uses Bowser-Morner for measurements of bias. Bowser-Morner provides Chain of Custody forms.

Detectors are exposed in the radon calibration chamber to ensure that the measurement system is working with acceptable criteria. The Relative percent error (RPE) is calculated as the difference between the measured and the reference value divided by the reference value.

$$\text{RPE} = (\text{reference value} - \text{measured value}) / \text{reference value} \times 100$$

The RPE, expressed as percent, is the individual bias value. Several sets of bias values are needed to be confident that a bias is present

- The accuracy objective is individual RPE results of  $\leq 25\%$ ,
- and 75% of the spikes in a group of spikes need to meet the RPE  $\leq 25\%$  requirement.

### Definitions

See Appendix D Definition of Terms for more detailed definitions.

## **Appendices**

- A. Complete Results for Radon Test
- B. Credentials
- C. Chain of Custody Forms
- D. Definitions of Terms

Appendix A  
Complete Results for Radon Test



**Northeast  
Laboratory  
Services**

P.O. BOX 788  
Waterville, Maine 04903-0788  
120 Main Street  
Westbrook, Maine 04092

## **Certificate of Analysis**

**Administrative Offices**  
Phone: 207-873-7711  
Fax: 207-873-7022

**Customer Service**  
Phone: 207-878-6481  
Fax: 207-887-8387

### **Radon Air Report**

Report Date: 8/12/2024

Attention: Brent Goodwin  
Goodwin Environmental Testing Inc  
17 Kathryn Ln  
Bangor, ME 04401

#### **Legend**

- ☒ Below EPA Action Level (4.0 pCi/L)
- ☐ At EPA Action Level or Above (4.0 pCi/L)

Location: State of Maine  
210 State St  
Augusta, ME 04333

Lab ID Number	Building Name/Area	Unit	Test Area	Temp (°F)	Start Date/Time	End Date/Time	Radon in Air (pCi/L)
602402213	State House	133	1st Floor: 047080	70	8/6/2024 13:38	8/8/2024 14:03	<input checked="" type="checkbox"/> Detector 1: 3.0
602402214	State House	132	1st Floor: 047081	70	8/6/2024 13:40	8/8/2024 14:04	<input checked="" type="checkbox"/> Detector 1: 0.7
602402215	State House	130	1st Floor: 047082	70	8/6/2024 13:43	8/8/2024 14:04	<input checked="" type="checkbox"/> Detector 1: 2.2
602402216	State House	131	1st Floor: 047083	70	8/6/2024 13:44	8/8/2024 14:05	<input checked="" type="checkbox"/> Detector 1: 3.1
602402217	State House	120	1st Floor: 047084	70	8/6/2024 13:46	8/8/2024 14:06	<input checked="" type="checkbox"/> Detector 1: 0.7
602402218	State House	122	1st Floor: 047085	70	8/6/2024 13:47	8/8/2024 14:06	<input checked="" type="checkbox"/> Detector 1: 0.8
602402219	State House	126D	1st Floor: 047086	70	8/6/2024 13:48	8/8/2024 14:07	<input checked="" type="checkbox"/> Detector 1: 1.0
602402220	State House	126D	1st Floor: 047087	70	8/6/2024 13:48	8/8/2024 14:07	<input checked="" type="checkbox"/> Detector 1: 1.0
602402221	State House	127	1st Floor: 047088	70	8/6/2024 13:49	8/8/2024 14:07	<input checked="" type="checkbox"/> Detector 1: 1.0
602402222	State House	123	1st Floor: 047089	70	8/6/2024 13:50	8/8/2024 14:08	<input checked="" type="checkbox"/> Detector 1: 2.1
602402223	State House	123B	1st Floor: 047090	70	8/6/2024 13:51	8/8/2024 14:08	<input checked="" type="checkbox"/> Detector 1: 0.5
602402224	State House	121	1st Floor: 047091	70	8/6/2024 13:52	8/8/2024 14:09	<input checked="" type="checkbox"/> Detector 1: 1.1
602402225	State House	119	1st Floor: 047092	70	8/6/2024 13:53	8/8/2024 14:10	<input checked="" type="checkbox"/> Detector 1: 2.8
602402226	State House	103	1st Floor: 047093	70	8/6/2024 13:54	8/8/2024 14:11	<input checked="" type="checkbox"/> Detector 1: 0.7
602402227	State House	105	1st Floor: 047094	70	8/6/2024 13:55	8/8/2024 14:11	<input checked="" type="checkbox"/> Detector 1: 0.6
602402228	State House	107	1st Floor: 047095	70	8/6/2024 13:56	8/8/2024 14:12	<input checked="" type="checkbox"/> Detector 1: 0.4
602402229	State House	109	1st Floor: 047096	70	8/6/2024 13:57	8/8/2024 14:12	<input checked="" type="checkbox"/> Detector 1: 0.4
602402230	State House	108D	1st Floor: 047097	70	8/6/2024 13:59	8/8/2024 14:13	<input checked="" type="checkbox"/> Detector 1: 0.5
602402231	State House	108D	1st Floor: 047098	70	8/6/2024 13:59	8/8/2024 14:13	<input checked="" type="checkbox"/> Detector 1: 0.7

602402213

Page 1 of 3



P.O. BOX 788  
Waterville, Maine 04903-0788  
120 Main Street  
Westbrook, Maine 04092

Administrative Offices  
Phone: 207-873-7711  
Fax: 207-873-7022

Customer Service  
Phone: 207-878-6481  
Fax: 207-887-8387

## Certificate of Analysis

### Radon Air Report

Report Date: 8/12/2024

Attention: Brent Goodwin  
Goodwin Environmental Testing Inc  
17 Kathryn Ln  
Bangor, ME 04401

#### Legend

- ☑ Below EPA Action Level (4.0 pCi/L)
- ☒ At EPA Action Level or Above (4.0 pCi/L)

Location: State of Maine  
210 State St  
Augusta, ME 04333

Lab ID Number	Building Name/Area	Unit	Test Area	Temp (°F)	Start Date/Time	End Date/Time	Radon in Air (pCi/L)
602402232	State House	106	1st Floor: 047099	70	8/6/2024 14:00	8/8/2024 14:13	☑ Detector 1: 0.5
602402233	State House	102	1st Floor: 047100	70	8/6/2024 14:01	8/8/2024 14:14	☑ Detector 1: 0.8
602402234	State House Closet by Elevator		1st Floor: 047101	70	8/6/2024 14:03	8/8/2024 14:14	☑ Detector 1: 1.5
602402235	State House	117	1st Floor: 047102	70	8/6/2024 14:04	8/8/2024 14:10	☒ Detector 1: 4.5
602402236	Corridor		1st Floor: 047103	70	8/6/2024 14:05	8/8/2024 14:15	☑ Detector 1: 2.4
602402237	State House Stairs Entrance		1st Floor: 047104	70	8/6/2024 14:08	8/8/2024 14:17	☑ Detector 1: 3.5
602402238	Second Floor Closet by Elevator		2nd Floor: 047105	70	8/6/2024 14:09	8/8/2024 14:15	☑ Detector 1: 2.9
602402239	Tunnel		047106	70	8/6/2024 14:13	8/8/2024 14:18	☑ Detector 1: 3.3
602402240	Boiler Room Office		Basement: 047107	75	8/6/2024 14:18	8/8/2024 14:20	☑ Detector 1: 0.7
602402241	Travel		047108	70	8/6/2024 14:18	8/8/2024 14:20	☑ Detector 1: 0.8
602402242	Office		047109	70	8/6/2024 14:18	8/8/2024 14:20	☑ Detector 1: 0.6





**Northeast  
Laboratory  
Services**

P.O. BOX 788  
Waterville, Maine 04903-0788  
120 Main Street  
Westbrook, Maine 04092

## Certificate of Analysis

**Administrative Offices**  
Phone: 207-873-7711  
Fax: 207-873-7022

**Customer Service**  
Phone: 207-878-6481  
Fax: 207-887-8387

### Radon Air Report

Report Date: 8/12/2024

**Attention:** Brent Goodwin  
Goodwin Environmental Testing Inc  
17 Kathryn Ln  
Bangor, ME 04401

**-Legend**

- ☒ Below EPA Action Level (4.0 pCi/L)
- ☒ At EPA Action Level or Above (4.0 pCi/L)

**Location:** State of Maine  
210 State St  
Augusta, ME 04333

Lab ID Number	Building Name/Area	Unit	Test Area	Temp (°F)	Start Date/Time	End Date/Time	Radon in Air (pCi/L)
---------------	--------------------	------	-----------	-----------	-----------------	---------------	----------------------

Radon measurements with a reading of 4pCi/L or more are at the EPA action level. The EPA recommends follow up measurements and fixing a home with levels of 4pCi/L or higher. The State of Maine considers levels of 2pCi/L or lower desirable, but does not necessarily recommend action unless over 4pCi/L.

Information on indoor radon, and any questions, comments, or complaints concerning radon services should be directed to the State of Maine Radiation Control Program, State House #10, Augusta, ME 04333-0010, 287-5676 or 1-800-232-0842.

Should you have any questions concerning your radon test result, please feel free to call us.

Please, contact NEL for your other environmental analytical needs, including water testing for lead and arsenic or indoor air quality.

Authorized By

*Adam Weber*  
Adam Weber, Laboratory Analyst

Review Date

8/12/2024

Note: NEL meets EPA requirements for radon testing. The State of Maine Radon Registration Act (22 MRSA sec. 771 et seq.) requires this laboratory to report the test results and zip codes of structures tested, and the street address in cases of very high radon levels.

Analytical results and reports are generated by NEL at the request of and for the exclusive use of the person or entity (client) named on this report. Results, reports, or copies of same will not be released by NEL to any third party without the prior express written consent from the client named in this report. This report applies only to those samples taken at the time, place, and location referenced by the client. The report makes no express or implied warranty or guarantee as to the sampling methodology used by the individual performing the sampling. The client is solely responsible for the use and interpretation of these results and NEL makes no express or implied warranties as to such use or interpretation. NEL is not able to make and does not make a determination as to the environmental soundness, safety or health of a property from only the samples sent to their laboratory for analysis. Unless otherwise specified by the Client, NEL reserves the right to dispose of all samples after the testing of such samples is sufficiently completed. NEL liability extends only to the cost of the testing. NRSB Regd ARL1401, ME REG# SPC3.



**State House, Formal Radon Testing, Pre-ERV Installation on 12/26/2023  
and 02/16/2024 with Average, plus Post-ERV Installation on 08/06/2024**

Floor	Location	Room	Pre-ERV 12/26/23 pCi/L	Pre-ERV 02/16/24 pCi/L	Pre-ERV Average pCi/L	POST-ERV 08/06/24 pCi/L	
-----	CSOB - By Elevator	-----	-----	0.6	-----	-----	
-----	CSOB - By Staircase	-----	-----	0.9	-----	-----	
T	Tunnel - Middle	-----	-----	30.6	-----	-----	
T	Tunnel - Middle	-----	-----	35.7	-----	-----	
T	Tunnel - By State House	-----	-----	21.4	-----	-----	
1	State House - Cafe	133	15.5	19.0	17.3	3.0	
1	State House	131	1.8	1.5	1.7	3.1	
1	State House - Stairs Entrance	-----	12.3	19.3	15.8	3.5	
1	State House	132	1.4	1.5	1.5	0.7	
1	State House - Welcome	130	11.5	15.4	13.5	2.2	
1	State House	120	5.3	3.1	4.2	0.7	
1	State House	122	16.7	11.1	13.9	0.8	
1	State House	126	3.6	3.5	3.6	1.0	
1	State House	126	3.4	2.8	3.1	1.0	
1	State House	127	10.7	8.3	9.5	1.0	
1	State House	123	16.0	1.4	8.7	2.1	
1	State House	123	1.6	12.2	6.9	0.5	
1	State House	121	4.3	2.9	3.6	1.1	
1	State House	119	12.9	4.0	8.5	2.8	
1	State House	103	5.0	6.9	6.0	0.7	
1	State House	105	4.8	4.6	4.7	0.6	
1	State House	107	5.1	5.8	5.5	0.4	
1	State House	109	4.8	5.9	5.4	0.4	
1	State House	108	5.3	5.0	5.2	0.5	
1	State House	108	6.1	5.3	5.7	0.7	
1	State House	106	4.8	4.8	4.8	0.5	
1	State House	102	2.7	3.1	2.9	0.8	
1	State House - Closet By Elevator	-----	9.2	7.7	8.5	1.5	
1	State House <i>Server rm</i>	117	10.9	11.2	11.1	4.5	
1	State House - Corridor		9.9	14.4	12.2	2.4	
2	State House	201	1.0	-----	-----	-----	
2	State House	201	1.5	-----	-----	-----	
2	State House - Library	-----	1.0	-----	-----	-----	
2	State House - Library	-----	0.6	-----	-----	-----	
2	State House - Closet Left Of Elevator	-----	7.6	-----	-----	2.9	
2	State House	226	1.4	-----	-----	-----	





State of Maine  
132<sup>nd</sup> Legislature, First Regular and First Special Sessions

Partial  
Report

## Commission to Recommend Methods for Preventing Deed Fraud in the State

December 2025

Office of Policy and Legal Analysis



**STATE OF MAINE  
132<sup>nd</sup> LEGISLATURE  
FIRST REGULAR/SPECIAL SESSION**

**Commission To Recommend Methods for  
Preventing Deed Fraud in the State**

**Staff:**

**Janet Stocco, Legislative Analyst  
Will Tew, Legislative Analyst  
Melanie Furman, Legislative Analyst  
Office of Policy & Legal Analysis  
13 State House Station  
Room 215 Cross Office Building  
Augusta, ME 04333-0013  
(207) 287-1670  
<http://legislature.maine.gov/opla>**

**Members:**

**Sen. Henry Ingwersen, Chair  
Rep. Adam Lee, Chair  
Sen. Marianne Moore  
Rep. Thomas Lavigne  
Nancy Hammond  
Carrie B. Cote, Esq.  
John Brautigam, Esq.  
Lieutenant Jason Richards  
Hannah McMullen, Esq.  
Mark Samson  
Jane B. Towle  
Cathy Beaudoin  
Attorney General Aaron Frey**

## Table of Contents

Executive Summary .....	iii
I. Commission Process.....	1
II. Background Information .....	2
A. <i>What is “deed fraud,” how does it occur, and how often does it occur in Maine?</i> .....	2
B. <i>Seller identity verification by real estate licensees in Maine</i> .....	6
C. <i>Notarization and recording of instruments affecting title to real property in Maine</i> .....	10
D. <i>Existing civil remedies available to victims of deed fraud in Maine</i> .....	16
E. <i>Existing criminal penalties potentially applicable to perpetrators of deed fraud in Maine</i> ..	19
F. <i>Deed fraud educational materials available to professionals and members of the public</i> ....	21
G. <i>Recent approaches to combatting deed fraud in other jurisdictions</i> .....	23
III. Findings and Recommendations.....	28
A. <i>Findings</i> .....	29
B. <i>Recommendations</i> .....	31
<b>Appendices</b>	
A. Authorizing Legislation: Resolve 2021, chapter 104	
B. Membership List: Commission to Recommend Methods for Preventing Deed Fraud in the State	
C. Staff handout: Current Data on Deed Fraud	
D. Presentation from York County Sheriff William King	
E. Memoranda from Real Estate Commission Director Catherine E. Pendergast	
F. Information on Title Insurance and other Civil Remedies from Carrie Cote, Esq.	
G. Staff handout: Criminal Penalties for Deed Fraud Overview	
H. Links to Educational Materials Gathered by Commission Members	
I. Staff handout: Examples of Recently Enacted Deed Fraud Legislation in Other States	
J. Draft Report of the Uniform Law Commission’s Deed Fraud Study Committee	
K. Commission Correspondence	
• Letter to Maine Municipal Association	
• Letter to the Real Estate & Title Section of the Maine State Bar Association	

## **Executive Summary**

Through Resolve 2025, chapter 104, the Legislature established the Commission to Recommend Methods for Preventing Deed Fraud in the State (“the Commission” or “Deed Fraud Commission”) to study and recommend to the Legislature options for both preventing and remedying the effects of deed fraud in the State. The Commission was comprised of 13 members, including several legislators and the following array of individuals with expertise relevant to the Commission’s work: a county register of deeds; an experienced title attorney; an attorney from the Maine Association of Realtors; a board member of the Maine Credit Union League; the Executive Director of Legal Services for Maine Elders; the commander of the Maine State Police Computer Crimes Unit; a member of the Real Estate Commission serving as the designee of the commission’s chair; the Director of Corporations, UCC & Commissions within the Office of the Secretary of State, serving as the Secretary of State’s designee; and the Attorney General of Maine.

Resolve 2025, chapter 104 charged the Commission with the following duties:

- Gathering information and data, if available, on the number and characteristics of successful incidents of and unsuccessful attempts at deed fraud in the State;
- Examining the sufficiency of state laws and practices for:
  - Identity verification for the sale of real property in Maine;
  - Notarization and recording of instruments affecting title to real property in Maine;
  - Existing criminal penalties potentially applicable to perpetrators of deed fraud; and
  - Civil remedies available to victims of deed fraud, including processes for nullifying fraudulently recorded deeds and returning properties to the rightful owners;
- Gathering and examining the sufficiency of currently available educational materials regarding deed fraud in the State for property owners, real estate brokerage agencies, title insurance companies, real estate attorneys and other professionals;
- Examining ways to mitigate the fraudulent listing of homes for rent by individuals who are not the legal homeowners; and
- Examining ways in which deed fraud is conducted through the Internet, including through the use of artificial intelligence technology.

The Commission held four public meetings at the Maine State House in the fall of 2025, receiving information on the following topics from commission members, a national expert and legislative staff:

- Currently available data on the prevalence and characteristics of deed fraud both in Maine and actual examples of both successful and unsuccessful instances of deed fraud in York County;
- The practices and duties of real estate licensees for verifying the identity of persons selling real property in the State; the role of title attorneys and the scope of available title insurance products in the State; the requirements for the notarization of instruments affecting title to real property in the State, including requirements for remote



notarization; and the recording of instruments affecting title to real property in the State and the role of Maine's county registers of deeds;

- Existing criminal penalties potentially applicable to perpetrators of deed fraud under state law and potential civil remedies for victims of deed fraud in the State;
- Deed fraud awareness and prevention educational materials currently available both to professionals involved in real estate transactions and to members of the public; and
- Recent studies and legislation from other states and the Uniform Law Commission designed to prevent and to provide relief for victims of deed fraud.

After carefully considering this information, the Commission makes the following findings and recommendations.

**Findings:**

1. Deed fraud, particularly seller impersonation fraud, is a growing problem nationwide and an emerging issue in the State of Maine. (Vote: 11-0)
2. In part because there is no uniform process for collecting statewide data on seller impersonation fraud, there is a lack of concrete data regarding the incidence of both attempted and successful instances of this fraud in Maine, the facts underlying each incident, and how each incident was discovered. (Vote: 11-0)
3. Although limited, the information available demonstrates that seller impersonation fraud is generally accompanied by one or more "red flags," which include, but are not limited to, the following:
  - The transaction involves unimproved, vacant land and/or unencumbered property;
  - The seller resides in a different state than the property;
  - the seller will only communicate by electronic means;
  - The seller requests the use of a notary not known to the real estate professionals involved in the transaction;
  - the seller pushes for a quick sale of the property;
  - The property is offered for sale below its market value; and
  - The transaction is conducted on a cash-only basis. (Vote: 11-0)
4. Due to the difficulties of locating and holding responsible the perpetrators of seller impersonation fraud, and the difficulties of unwinding real estate transactions after the fraudulent activity has occurred, it is essential to focus on preventing seller impersonation fraud. (Vote: 10-0)
5. Despite recent increased attention to the problem, there remains a lack of awareness about seller impersonation fraud among members of the general public and among professionals involved in real estate transactions, particularly regarding where to report incidents of deed fraud and the remedies available for victims of deed fraud. (Vote: 11-0)

**Recommendations:**

1. The Legislature should enact legislation requiring both real estate licensees and settlement agents to verify the identity of persons selling property in all real estate transactions. The steps that each professional must take to fulfil this duty should be specified in rules developed jointly by the Real Estate Commission, for real estate licensees, and the Bureau of Consumer Credit Protection within the Department of Professional and Financial Regulation, for settlement agents. (Vote: 9-2)
2. Municipalities should take steps to ensure that the addresses they maintain for property tax purposes accurately reflect the current addresses of property owners because these tax records can provide a helpful tool for verifying the identity of persons seeking to list property for sale. (Vote: 9-2)
3. The Legislature should enact legislation establishing a process through which a licensed attorney may record an affidavit in the registry of deeds on behalf of a property owner that has the legal effect of nullifying a fraudulent deed in a way that avoids the time and expense of obtaining a court judgment. The Commission recommends that the Judiciary Committee consult the Maine State Bar Association, Real Estate & Title Section, as it develops legislation to implement this process. (Vote: 9-2)
4. The Judiciary Committee should monitor whether the Uniform Law Commission adopts a uniform or model law to address deed fraud and, if so, should consider whether to adopt that uniform or model law in whole or in part. (Vote: 11-0)



State of Maine  
132<sup>nd</sup> Legislature, First Regular and First Special Sessions

**Commission to Evaluate the Scope  
of Regulatory Review and Oversight  
Over Health Care Transactions That  
Impact the Delivery of Health Care  
Services in the State**

**December 2025**

Partial  
Report

Office of Policy and Legal Analysis



**STATE OF MAINE  
132<sup>nd</sup> LEGISLATURE  
FIRST REGULAR AND FIRST SPECIAL SESSIONS**

**Commission to Evaluate the Scope of Regulatory Review and Oversight  
over Health Care Transactions That Impact  
the Delivery of Health Care Services in the State**

**Staff:**

**Colleen McCarthy Reid, Principal Analyst  
Karen Nadeau, Senior Legislative Analyst  
Steven Langlin, Legislative Analyst  
Office of Policy & Legal Analysis  
13 State House Station  
Room 215 Cross Office Building  
Augusta, ME 04333-0013  
(207) 287-1670  
<http://legislature.maine.gov/opla>**

**Members:**

**Sen. Mike Tipping, Chair  
Rep. Michelle Boyer, Chair  
Sen. David Haggan  
Rep. Robert A. Foley  
Susan Cheff  
Kate Ende  
Meg Garratt-Reed  
Christina Maguire  
William Montejo  
Kristine M. Ossenfort  
Roger Poitras  
Adam Prescott  
Trevor Putnok  
Marie Vienneau  
Angela Cole Westhoff**

## Table of Contents

	Page
Executive Summary .....	ii
I. Introduction.....	1
II. Establishment of Commission .....	1
III. Background on current and former laws related to the regulatory oversight of health care transactions.....	3
IV. Commission process .....	6
V. Recommendations.....	7
<b>Appendices</b>	
A. Authorizing Legislation: Resolve 2025, chapter 106	
B. Membership List: Commission to Evaluate the Scope of Regulatory Review and Oversight over Health Care Transactions That Impact the Delivery of Health Care Services in the State	
C. Department of Health and Human Services Guidance on Notice of Maternity and/or Newborn Care Changes	
D. Examples of Legislation Proposing to Prohibit Interference with Licensed Professionals' Clinical Judgment	

## **Executive Summary**

The Commission to Evaluate the Scope of Regulatory Review and Oversight over Health Care Transactions That Impact the Delivery of Health Care Services in the State, referred to in this report as the “commission,” was established by Resolve 2025, chapter 106.

The establishment of the commission was recommended by the Joint Standing Committee on Health Coverage, Insurance and Financial Services following consideration of three bills related to the regulatory review and oversight of health care transactions during the First Regular Session of the 132nd Legislature: LD 985, An Act to Impose a Moratorium on the Ownership or Operation of Hospitals in the State by Private Equity Companies or Real Estate Investment Trusts; LD 1578, An Act to Require the Department of Health and Human Services to Review Disruption to or Removal of Health Services; and LD 1972, An Act to Enhance Transparency and Value in Substantial Health Care Transactions by Changing the Review and Approval Process for Those Transactions. While the committee held public hearings and work sessions on each bill, the committee members felt that there was not adequate time left in the legislative session to allow the committee to fully understand and consider the proposed bills and analyze the policy and legal issues raised by stakeholders. Instead, the committee chose to amend LD 1578 to establish the commission and drafted the resolve so that the substantive duties of the commission reflected the issues raised by these bills.

As finally passed by the Legislature, Resolve 2025, chapter 106 requires the commission to evaluate potential changes to health care regulations and practices, including assessing certificate of need laws and their impact on health services, reviewing substantial health care transactions and the role of private equity in hospitals, gathering best practices from other states, and holding public comment sessions for input. Specifically, the resolve requires the commission to evaluate:

- Potential changes to the State's certificate of need laws, including, but not limited to, expanding the scope of review to the termination or disruption of health care services and changing the monetary thresholds that trigger review;
- Potential legislative changes to require regulatory review and oversight of substantial health care transactions, such as transfers of ownership or control, among hospitals, health care facilities and health care provider organizations; and
- The role of a private equity company or real estate investment trust taking a direct or indirect ownership interest, operational control or financial control of a hospital in the State.

The commission was chaired by Senator Mike Tipping and Representative Michelle Boyer. Other voting members of the commission were appointed to represent stakeholder interests, including hospitals and other health care providers, such as independently owned specialty practices, nursing homes or other long-term care facilities; health insurance consumers; health insurance carriers; and health care purchasers. The commission also included a member with expertise in the field of certificate of need law or mergers and acquisitions of health care entities; the executive director of the Office of Affordable Health Care and the designee of the Commissioner of Health and Human Services or the commissioner's designee.

The commission met five times: October 8th, October 22nd, November 5th, November 17th and December 8th. Over the course of five meetings, the commission used its time to fulfill the duties set forth in its authorizing legislation. During its meetings, the commission received and discussed information relating to the regulatory oversight of health care facilities in Maine and in other states. In addition to the proposed legislation that initiated the establishment of the commission, the current and former authority provided in State law related to the regulatory oversight of health care transactions also informed the commission's work, particularly the Certificate of Need (CON) laws and the authority of the Attorney General to enforce antitrust laws.

At the request of the chairs, individual commission members suggested potential recommendations for consideration by the full commission. The commission discussed each suggested recommendation and took initial straw votes to gauge the commission's interest in continued discussion of each suggestion. The commission focused its consideration on those potential recommendations developed over the course of its meetings that were of interest to all or a majority of commission members present and voting. (As the designee of the Commissioner of Health and Human Services, Commissioner Montejo abstained and did not participate in the commission's straw votes or final votes.) The commission agreed that this report would include only those recommendations that represented the consensus of all members or were supported by a majority of seven or more commission members.

Commission members acknowledge that it was not possible to consider and understand all of the implications and consequences of these recommendations. The recommendations suggested to the Legislature in this report are based on the information available to members at the time of the meetings and the commission encourages the Legislature to engage commission members and other stakeholders in additional discussion before moving forward. Commission members also want to note that it will be important for the Legislature to carefully consider the scope of any proposed legislation, to pay particular attention to how specific terms are defined and to understand the potential impact of these recommendations on the State's existing health care delivery system and infrastructure. With these considerations in mind, the commission provides the following comments and recommendations. Unless otherwise noted, the recommendations reflect the consensus of all commission members.

#### **Potential Changes Related to the Certificate of Need Program**

The commission recommends that the Legislature consider the following changes to the Certificate of Need (CON) program.

- ❖ **Increase the monetary threshold in current law that requires CON review and approval to establish a new health care facility based on the estimated cost of the facility from \$3 million to the 2025 amount as adjusted to reflect the United States Department of Labor, Bureau of Labor Statistics Consumer Price Index medical care services index and require that the threshold amount for review be adjusted annually based on the change in that index**

- ❖ **Codify the voluntary guidance developed by the Department of Health and Human Services, Division of Licensing and Certification to require that hospitals provide at least 120-days' prior notice to the division of a permanent closure of a hospital's labor and delivery unit or of a change in the level of care a hospital provides for maternity and newborn services**
- ❖ **Expand the criteria considered during a CON review to include consideration of a proposal's impact on affordability and accessibility of health care for all Maine consumers and provide any additional resources needed to implement the expanded scope of review**

#### **Potential Changes Related to the Regulatory Oversight Over Health Care Transactions**

The commission recommends that the Legislature consider the following changes related to the regulatory oversight over health care transactions.

- ❖ **Require a health care entity to provide notice to the Attorney General about a pending merger or acquisition at the same time a health care entity is required to notify the Federal Trade Commission in accordance with federal law and regulations**
- ❖ **Require that a health care entity provide notice to the State of a transaction between a health care entity and a private equity company, hedge fund or management services organization when a private equity company, hedge fund or management services organization acquires a majority ownership interest in a health care entity or a private equity company, hedge fund or management services organization takes operational control over a health care entity**
- ❖ **Develop a regulatory process for review and approval of transactions when a private equity company, hedge fund or management services organization acquires a majority ownership interest in a health care entity or when a private equity company, hedge fund or management services organization takes operational control over a health care entity** (*Commission Vote: 7-6*)

#### **Potential Changes to Address Role of Private Equity Investment in Health Care**

The commission recommends that the Legislature consider the following changes to address the role of private equity investment in health care.

- ❖ **Expand the scope of CON review when there is a change in ownership of an entity to:**
  - **Review and analyze the extent to which the applicant's ownership structure involves a private equity company or real estate investment trust;**
  - **Require that the department contract with a consultant funded by the applicant to review and investigate the prior activities and conduct of the private equity company or real estate investment trust;**
  - **Authorize the department to consult with the Attorney General; and**



- **Broaden the authority of the department to impose conditions on an applicant and to conduct subsequent reviews following a conditional approval of an applicant for CON**
- ❖ **Prohibit any private equity company or real estate investment trust from entering any arrangement with a health care entity for the sale and leaseback of the health care entity's main campus or primary location to the private equity company or real estate investment trust**
- ❖ **Prohibit any transaction involving a health care entity in which the ratio of debt to equity is greater than 50%**  
(*Commission Vote: 9-4*)
- ❖ **Prohibit any person from interfering with the professional judgment or clinical decision of a licensed health care professional with independent practice authority** (*Commission Vote: 7-6*)

#### **Potential Recommendations with Broader Scope**

The commission recommends that the Legislature consider the following recommendations with a broader scope that the members believe will further the purposes of the commission's evaluation of the State's health care delivery system.

- ❖ **Recommend that the Legislature re-establish statewide health care services planning by increasing coordination and information sharing between state agencies responsible for community health needs assessments, regional public health planning and implementation of the rural health transformation program**
- ❖ **To the maximum extent possible, recommend use of federal grant funding through the Rural Health Transformation Program to support the sustainability of rural health care providers**
- ❖ **Prohibit provider non-compete clauses and non-disparagement clauses in contracts with licensed health care professionals** (*Commission Vote: 8-4*)
- ❖ **Recommend that the Legislature consider the creation of a task force to study the demand for long-term care to determine the appropriate number of long-term care beds and to increase nursing home bed capacity statewide** (*Commission Vote: 10-1*)



State of Maine  
132<sup>nd</sup> Legislature, First Regular and First Special Sessions

Partial  
Report

# Commission to Expand Access to Oral Health Care by Studying Alternative Pathways for Obtaining a License to Practice Dentistry

December 2025

Office of Policy and Legal Analysis



**STATE OF MAINE  
132<sup>nd</sup> LEGISLATURE  
FIRST REGULAR AND FIRST SPECIAL SESSIONS**

**Commission to Expand Access to Oral Health Care by Studying Alternative  
Pathways for Obtaining a License to Practice Dentistry**

**Staff:**

**Anna Broome, Principal Analyst  
Anne Davison, Legislative Analyst  
Sophia Paddon, Legislative Analyst  
Office of Policy & Legal Analysis  
13 State House Station  
Room 215 Cross Office Building  
Augusta, ME 04333-0013  
(207) 287-1670  
<http://legislature.maine.gov/opla>**

**Members:**

**Sen. Donna Bailey, Chair  
Rep. Ambureen Rana, Chair  
Sen. Cameron Reny  
Rep. Lucien Daigle  
Dr. Israel Adeloyle  
Therese Cahill  
Danica Loring  
Dr. Riddhi Badamia  
Traci Dempsey  
Dr. Jeffrey Walawender  
Penny Vaillancourt**

## Table of Contents

Executive Summary .....	iii
I. Introduction.....	1
II. Background.....	2
A. Trends in Dental Provider Workforce.....	3
B. Current Licensing Pathways.....	6
C. Licensing of Foreign-Trained Dentists .....	9
D. Limited Licensure in Massachusetts .....	10
E. MaineCare .....	12
F. Oral Health Program.....	16
G. Specialist Services.....	17
III. Recommendations.....	19

## Appendices

- A. Authorizing Legislation: Resolve 2025, c. 107
- B. Commission Membership List: Commission to Expand Access to Oral Health Care by Studying Alternative Pathways for Obtaining a License to Practice Dentistry
- C. Meeting Agendas
- D. Recommended Legislation

## Executive Summary

The Commission to Expand Access to Oral Health Care by Studying Alternative Pathways for Obtaining a License to Practice Dentistry, referred to in this report as the “commission,” was established during the 132nd Maine Legislature, pursuant to Resolve 2025, chapter 107. The Resolve is included as Appendix A. The commission consisted of 11 members representing the Senate, the House of Representatives, and various government agencies and public interests. The membership is included as Appendix B.

The commission was tasked with making recommendations on the following:

1. Strategies to integrate foreign-trained dentists and dentists from other states into the State's dental care workforce;
2. Changes to state laws and rules that may pose unnecessary barriers to practice for foreign-trained dentists and dentists from other states;
3. Necessary supports for foreign-trained dentists and out-of-state dentists moving through the different steps in the licensing process prior to involvement with the Board of Dental Practice;
4. Opportunities to advocate for corresponding changes to national licensing requirements; and
5. Any other matters pertaining to foreign-trained dentists and dentists from other states considered necessary by the commission.

The commission met three times during the legislative interim in 2025 and heard presentations from state agencies and organizations before voting on nine recommendations at the final meeting. Based on its consideration of the information received over the course of its work, this report makes the following recommendations to the Joint Standing Committee on Health Coverage, Insurance and Financial Services. Recommendations that are not unanimous are noted below.

### Limited Dentist License

Recommendation: The Legislature should pass legislation similar to LD 1615 in the 132nd, 1st Regular Session, as originally printed, with the following modifications: naming and defining a “limited dentist,” replacing the term “adjunct dentist” and changing the number of consecutive years a person must practice under a limited dentist license, in good standing, from three to six in order to become licensed as a dentist. (This recommendation is a majority vote.)

### Department of Professional and Financial Regulation, Office of Professional and Occupational Regulation, Maine Board of Dental Practice

Recommendation: The Joint Standing Committee on Health Coverage, Insurance and Financial Services should request the Maine Board of Dental Practice to report to the committee by February 2026 and again by February 2027 on the progress it has made towards promulgating rules for licensure by endorsement as required by 10 M.R.S. §8003-H. The rules established by

the Board should include, but should not be limited to, the process and criteria the Board utilizes to do the following:

- Evaluate the “education equivalent of a doctoral degree in dentistry” for applicants seeking licensure through endorsement; and
- Establish of a publicly accessible list of States that the Board has determined met the criteria for substantially equivalent licenses.

Recommendation: The Department of Professional and Financial Regulation should direct the Office of Professional and Occupational Regulation to explore funding sources that would provide the Board of Dental Practice with the ability to increase its administrative infrastructure to develop and administer a pilot project to collect workforce data, at the time of initial licensure and license renewal for both dentists and dental hygienists, as authorized by 32 M.R.S. §18341, sub-§1. The Commission encourages the Office of Professional and Occupational Regulation to allocate some of the funds it may receive towards this purpose to support a full-time employee dedicated to analyzing the data collected by the Board via the pilot.

### **University of New England, Advanced Standing Track**

Recommendation: The Joint Standing Committee on Health Coverage, Insurance and Financial Services should send a letter to the University of New England’s College of Dental Medicine encouraging the school to increase the number of spots available to foreign-trained dentists seeking enrollment in the Advanced Standing Track for international dentists program. (This recommendation is a majority vote.)

### **MaineCare**

Recommendation: As part of the 2026 scheduled MaineCare rate review process for Section 25, Dental Services, the Legislature should support an increase in reimbursement rates to levels that will make it economically feasible for dental providers to enroll and treat MaineCare patients. The review process must include systematic input from dental providers. (One member abstained from voting on this recommendation.)

Recommendation: The Department of Health and Human Services, Office of MaineCare Services, should continue its efforts to increase the enrollment of dental providers as MaineCare providers and improve and simplify the process used to claim reimbursements. (One member abstained from voting on this recommendation.)

Recommendation: The Maine Board of Dental Practice should continue to explore incentives to encourage dental providers to enroll as MaineCare providers and treat MaineCare patients, including providing continuing education credits.

### **Dental Specialists**

Recommendation: The Joint Standing Committee on Health Coverage, Insurance and Financial Services should direct the Department of Health and Human Services to explore the development

of a hub-and-spoke model of providing dental services. Hubs could include the University of New England or Federal Qualified Health Clinics, where specialized services are available. Spokes could include mobile units and nontraditional practices, such as dental practices that are limited in scope, that provide services in areas where the population density is insufficient to support a dental provider setting up a practice. (One member abstained from voting on this recommendation.)

Recommendation: The Joint Standing Committee on Health Coverage, Insurance and Financial Services should direct the Department of Health and Human Services to explore options to establish educational specialist residency programs, especially for pediatric dentists, oral surgery and orthodontists. (One member abstained from voting on this recommendation.)



State of Maine  
132<sup>nd</sup> Legislature, First Regular and First Special Sessions

Partial  
Report

**Twentieth Annual Report  
of the  
Right to Know Advisory Committee**

**January 2026**

**Office of Policy and Legal Analysis**





**STATE OF MAINE  
132<sup>nd</sup> LEGISLATURE  
FIRST REGULAR/FIRST SPECIAL SESSIONS**

**Twentieth Annual Report  
of the  
Right to Know Advisory Committee**

**Staff:**

**Samuel Senft, Legislative Analyst  
Elena Roig, Legislative Analyst  
Melanie Furman, Legislative Analyst  
Kristin Bishop, Legislative Analyst  
Office of Policy & Legal Analysis  
13 State House Station  
Room 215 Cross Office Building  
Augusta, ME 04333-0013  
(207) 287-1670  
<http://legislature.maine.gov/opla>**

**Members:**

**Sen. Anne Carney, Chair  
Rep. Rachel Henderson  
Amy Beveridge  
Jonathan Bolton  
Hon. Justin Chenette  
Lynda Clancy  
Julia Finn  
Betsy Fitzgerald  
Jen Lancaster  
Kevin Martin  
Judy Meyer  
Hon. Kim Monaghan  
Tim Moore  
Cheryl Saniuk-Heinig  
Connor P. Schratz  
Eric Stout**

## Table of Contents

	Page
Executive Summary .....	1
I. Introduction .....	3
II. Committee Duties .....	4
III. Recent Court Decisions Related to Freedom of Access.....	5
IV. Actions Related to Recommendations Contained in Nineteenth Annual Report .....	6
V. Committee Process.....	8
VI. Recommendations.....	23
VII. Future Plans .....	29

### Appendices

- A. Authorizing legislation: 1 MRSA §411
- B. Membership list: Right to Know Advisory Committee
- C. Public Employee Disciplinary Records Stakeholder Report – Maine State Archives
- D. Summary of 5/21/25 law enforcement and media meeting
- E. Recommended legislation to amend public records exceptions
- F. Existing public records exceptions in Titles 25-32 recommended to continue without change
- G. Summary of Public Employee Disciplinary Records Stakeholder Report
- H. 2/7/25 letter to Criminal Law Advisory Commission
- I. 6/18/25 letter from Judiciary Committee
- J. 9/25/25 letter from Senator Rotundo
- K. Questions sent to stakeholders regarding public access to disciplinary records of public employees
- L. Responses to questions sent to stakeholders regarding public access to disciplinary records of public employees – Part 1
- M. Responses to questions sent to stakeholders regarding public access to disciplinary records of public employees – Part 2
- N. Recommended legislation to amend Title 20-A, section 13025, subsections 3 and 4, paragraph B
- O. Letter to Maine School Management Association
- P. 11/6/25 letter to Senator Moore
- Q. Draft letter to Maine County Commissioners Association
- R. Draft letter to Maine Municipal Association
- S. Draft letter to Maine School Management Association
- T. FOAA mediation process proposal

## U. FOAA mediation process proposal flowchart

## EXECUTIVE SUMMARY

This is the twentieth annual report of the Right to Know Advisory Committee (“RTKAC” or “Advisory Committee”). The Advisory Committee was created by Public Law 2005, chapter 631 as a permanent advisory council with oversight authority and responsibility for a broad range of activities associated with the purposes and principles underlying Maine’s Freedom of Access Act (FOAA). Advisory Committee members are appointed by the Governor, the Chief Justice of the Supreme Judicial Court, the Attorney General, the President of the Senate and the Speaker of the House of Representatives.

As in previous annual reports, this report includes a brief summary of the legislative actions taken in response to the Advisory Committee’s January 2025 recommendations and a summary of relevant Maine court decisions from 2025 related to the freedom of access laws. This report also summarizes several topics discussed by the Advisory Committee that did not result in a recommendation or further action.

For its twentieth annual report, the Advisory Committee makes the following recommendations.

- ☐ **Amend certain provisions of law in Titles 25, 26, 27, 28-B, 29-A, and 32 relating to previously enacted public record exceptions.**
- ☐ **Should the Judiciary Committee move forward in implementing a public records exception to make confidential the identities of railroad employees who are involved in an accident, the Committee should consider narrowly tailoring the exception to apply to personally identifiable information.**
- ☐ **Continue examination of the exception found at 1 MRS §402, sub-§3, ¶H, which provides that medical records and reports of municipal ambulance and rescue units and other emergency medical service units are confidential.**
- ☐ **Continue discussions regarding public employee disciplinary records by looking specifically at the interaction between tiered systems of record retention; defining different levels of discipline in terms of severity; and examining whether consistency among definitions should be established at the entity level, at the statutory level, or at the state agency level.**
- ☐ **Amend Title 20-A, section 13025 to require a school entity to notify the Department of Education immediately if a credential holder who is facing allegations that are the subject of, or would have triggered a covered investigation, leaves the school entity’s employment for any reason prior to the conclusion of the covered investigation.**
- ☐ **Request that the Maine School Management Association work with school districts to encourage the adoption of a question in their hiring forms asking if a potential employee has ever resigned over allegations of misconduct or an investigation into misconduct from a previous employer.**

- ☐ **Request that the Maine Municipal Association, Maine County Commissioners Association and Maine School Management Association distribute surveys regarding use of technology, including artificial intelligence, in responding to FOAA requests, and that the Maine School Management Association include in that distribution district technology directors. Survey results will be compiled by committee staff in advance of next year's convening of the Advisory Committee.**
- ☐ **Continue the Technology Subcommittee in the 21st Right to Know Advisory Committee in 2026 to monitor any actions taken to advance the recommendations of the Maine Artificial Intelligence Task Force report and to monitor the rapid development of artificial intelligence (AI), particularly in its use by public entities and the intersection of AI and FOAA. Arrange a presentation, during the 21st Right to Know Advisory Committee, in which a vendor provides overview of the technology available to states for public records, exploring how other states use technology, including but not limited to AI, to assist in retaining, searching and distributing public records (e.g., Indiana).**
- ☐ **Continue to examine the adoption of language relating to executive sessions and the confidentiality of information discussed at executive sessions. Request feedback from the Education and State and Local Government joint standing committees.**
- ☐ **Prior to the convening of the 21<sup>st</sup> Right to Know Advisory Committee, research whether the Advisory Committee is authorized by statute to recommend that the Judiciary Committee amend the statutes governing access to court records in child protection cases.**
- ☐ **Request information from police chiefs regarding possible amendment of 1 MRSA §412, sub-§4 to require Chiefs of Police to complete FOAA training, for consideration by the Advisory Committee next year.**
- ☐ **Continue the Burdensome FOAA Requests Subcommittee in the 21st Right to Know Advisory Committee in 2026, continue discussions regarding the adoption of a FOAA request mediation process, and, during the period prior to the convening of the 21<sup>st</sup> Advisory Committee, direct staff and a designated member of the Committee to consult with the Public Access Ombudsman regarding a mediation process.**

In 2026, the Right to Know Advisory Committee will continue to provide assistance to the Joint Standing Committee on Judiciary relating to proposed legislation affecting public access. The Advisory Committee looks forward to another year of activities working with the Public Access Ombudsman, the Judicial Branch and the Legislature to implement the recommendations in this report.